

Asian Americans, Native Hawaiians, and Pacific Islanders collectively represent one of the United States' fastest growing racial demographic cohorts. With over 24 million AAPI individuals (including mixed-race) residing across the nation, this rapidly expanding population has concurrently become the nation's fastest-growing voter bloc. The 2020 presidential election and 2022 midterm elections witnessed AAPI voters participate at unprecedented turnout rates, exceeding the margin of victory in many voting battleground areas.

In recognition of AAPI's rapid growth and impact, these state-specific AAPI voter demographic fact sheets are updated every two years. They serve as vital resources to comprehensively analyze AAPI population metrics and voter engagement indicators, tailored to all 50 states and the District of Columbia.

For political campaigns, elected representatives, advocacy organizations, media entities, and academic researchers, these AAPI voter demographic state fact sheets unlock valuable insights, serving as a resource that allows stakeholders to comprehend and strategically engage the AAPI electorate in their state.

## TABLE OF CONTENTS

*Click on state below to jump to page*

2	ALABAMA	40	KENTUCKY	80	NORTH DAKOTA
4	ALASKA	42	LOUISIANA	82	OHIO
7	ARIZONA	44	MAINE	84	OKLAHOMA
9	ARKANSAS	46	MARYLAND	86	OREGON
11	CALIFORNIA	48	MASSACHUSETTS	88	PENNSYLVANIA
14	COLORADO	51	MICHIGAN	91	RHODE ISLAND
16	CONNECTICUT	54	MINNESOTA	93	SOUTH CAROLINA
18	DELAWARE	57	MISSISSIPPI	95	SOUTH DAKOTA
20	D.C.	59	MISSOURI	97	TENNESSEE
22	FLORIDA	61	MONTANA	99	TEXAS
24	GEORGIA	63	NEBRASKA	102	UTAH
26	HAWAII	65	NEVADA	104	VERMONT
29	IDAHO	68	NEW HAMPSHIRE	106	VIRGINIA
31	ILLINOIS	70	NEW JERSEY	109	WASHINGTON
34	INDIANA	73	NEW MEXICO	112	WEST VIRGINIA
36	IOWA	75	NEW YORK	114	WISCONSIN
38	KANSAS	78	NORTH CAROLINA	116	WYOMING

# 2024 AAPI Voter Demographics | ALABAMA

**58,764**

ELIGIBLE AAPI VOTERS\*

**45.7%**

AAPI VOTER ELIGIBILITY  
GROWTH (2012-2022)

**1.52%**

AAPI SHARE OF  
ELECTORATE IN ALABAMA



**23,519**

FOREIGN BORN  
NONCITIZENS

**28,490**

FOREIGN BORN  
CITIZENS

**49,973**

NATIVE BORN  
CITIZENS

\* Includes multi-racial population

## COUNTIES WITH HIGHEST AAPI POPULATIONS

	AAPI Share of County Pop	Size of AAPI Population	AAPI Eligible Voter Share of County	Number of AAPI Eligible Voters
Jefferson County	1.8%	11,844	2.3%	6,199
Madison County	2.5%	9,839	3.3%	5,393
Mobile County	2%	8,425	2.7%	4,664
Lee County	4.4%	7,663	5.8%	2,472
Montgomery County	3.3%	7,612	4.5%	2,742

## LARGEST ASIAN AMERICAN ETHNIC GROUPS IN ALABAMA

Chinese, except Taiwanese (16,465)	Korean (16,286)	Asian Indian (16,221)	Filipino (13,708)	Vietnamese (11,876)	Japanese (7,273)
--	--------------------	--------------------------	----------------------	------------------------	---------------------

## LARGEST NHPI ETHNIC GROUPS IN ALABAMA

Native Hawaiian (3,526)	Chamorro (762)	Samoan (619)
----------------------------	-------------------	-----------------

# 2024 AAPI Voter Demographics | ALABAMA

## AAPI CITIZEN VOTING AGE POPULATION (CVAP)

**37.2%**

Voters aged 50+

**27.0%**

Voters aged 18-29

## VOTER ENGAGEMENT *(National Level Data)*

- Voter contact falls short for AAPIs. In the 2022 Asian American Voter Survey (AAVS), 56% of Asian Americans had no or uncertain contact from the Democrats. 66% reported the same from the Republicans.
- Of contacted Asian American registered voters, 44% reported outreach from Democrats, 35% from Republicans, 39% from community groups. Comparatively, in 2016, 48% reported Democratic outreach, 16% from the Republicans.
- 37% of registered Asian Americans did not identify with either party, signaling need and opportunity for voter education via outreach.

## IMPORTANCE OF LANGUAGE ACCESS

Per the 2022 AAVS, of Asian Americans speaking non-English languages at home, 11% reported language barriers to voting and 42% stated voting assistance in their language would be utilized. *(National level data).*

**54.1%** of Asian American adults in AL **speak a language other than English at home.**

**31.9%** of Asian American adults in AL are **Limited English Proficient** (speak English less than “Very well”)

**Korean** (9,353) **Chinese** (9,221) **Vietnamese** (8,042) **Tagalog** (3,942) **Gujarati** (2,734)

**Other Eastern Malayo-Polynesian languages (103)**

### TOP 5 ASIAN LANGUAGES SPOKEN IN AL

### TOP NHPI LANGUAGES WITH 100+ ESTIMATED SPEAKERS IN AL

## SOCIOECONOMIC CHALLENGES IN ALABAMA



About 11.3% Asian Americans and 19.6% NHPIs in Alabama live in poverty.



About 9.3% Asian Americans and 12% NHPIs in Alabama lack health insurance.



About 14% Asian Americans and 22.8% NHPIs in Alabama lack broadband access.

# 2024 AAPI Voter Demographics | ALASKA

**48,658**

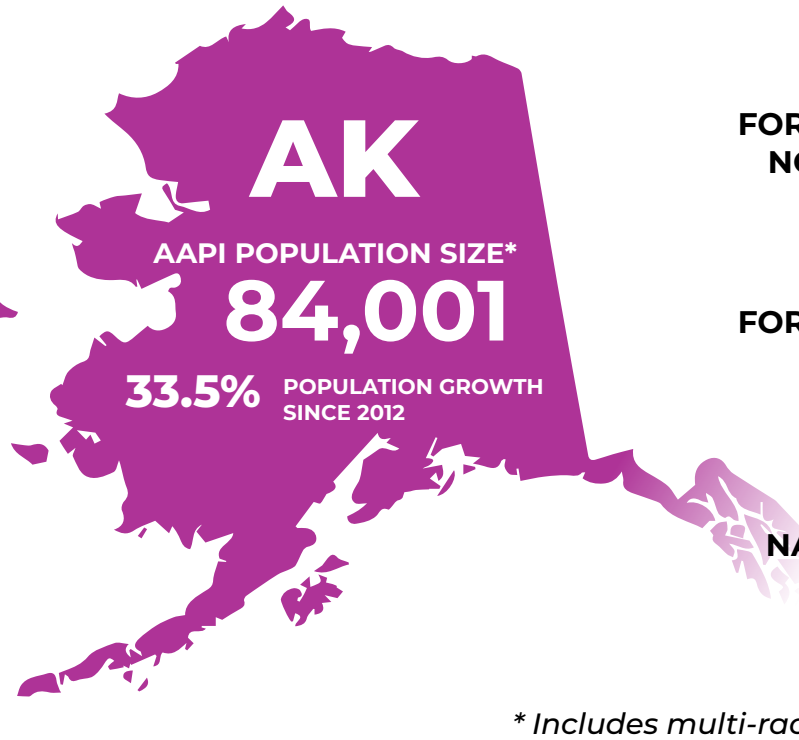
ELIGIBLE AAPI VOTERS\*

**28.9%**

AAPI VOTER ELIGIBILITY  
GROWTH (2012-2022)

**9.04%**

AAPI SHARE OF  
ELECTORATE IN ALASKA



**12,867**

FOREIGN BORN  
NONCITIZENS

**22,123**

FOREIGN BORN  
CITIZENS

**44,900**

NATIVE BORN  
CITIZENS

*\* Includes multi-racial population*

## COUNTY WITH HIGHEST AAPI POPULATION

	AAPI Share of County Pop	Size of AAPI Population	AAPI Eligible Voter Share of County	Number of AAPI Eligible Voters
Anchorage Municipality	11.4%	32,995	15.6%	21,633

## LARGEST ASIAN AMERICAN ETHNIC GROUPS IN ALASKA

Filipino (35,940)	Korean (6,860)	Hmong (5,909)	Japanese (5,438)	Chinese, except Taiwanese (4,928)	Vietnamese (1,989)
----------------------	-------------------	------------------	---------------------	---	-----------------------

## LARGEST NHPI ETHNIC GROUPS IN ALASKA

Samoan (9,032)	Native Hawaiian (4,076)	Tongan (1,919)
-------------------	----------------------------	-------------------

# 2024 AAPI Voter Demographics | ALASKA

## AAPI CITIZEN VOTING AGE POPULATION (CVAP)

**32.2%**

Voters aged 50+

**29.4%**

Voters aged 18-29

## VOTER ENGAGEMENT *(National Level Data)*

- Voter contact falls short for AAPIs. In the 2022 Asian American Voter Survey (AAVS), 56% of Asian Americans had no or uncertain contact from the Democrats. 66% reported the same from the Republicans.
- Of contacted Asian American registered voters, 44% reported outreach from Democrats, 35% from Republicans, 39% from community groups. Comparatively, in 2016, 48% reported Democratic outreach, 16% from the Republicans.
- 37% of registered Asian Americans did not identify with either party, signaling need and opportunity for voter education via outreach.

## IMPORTANCE OF LANGUAGE ACCESS

Per the 2022 AAVS, of Asian Americans speaking non-English languages at home, 11% reported language barriers to voting and 42% stated voting assistance in their language would be utilized. *(National level data).*

**55.6%** of Asian American adults in AK **speak a language other than English at home.**

**31.5%** of Asian American adults in AK are **Limited English Proficient** (speak English less than “Very well”)

**Tagalog** (19,942) **Hmong** (4,800) **Korean** (3,629) **Chinese** (1,813) **Vietnamese** (1,134)

**Samoan** (3,552) **Other Eastern Malayo-Polynesian languages** (231) **Chamorro** (204)

### TOP 5 ASIAN LANGUAGES SPOKEN IN AK

### TOP NHPI LANGUAGES WITH 100+ ESTIMATED SPEAKERS IN AK

## SOCIOECONOMIC CHALLENGES IN ALASKA



About 8.6% Asian Americans and 24.1% NHPIs in Alaska live in poverty.



About 10.2% Asian Americans and 10.7% NHPIs in Alaska lack health insurance.



About 25.7% Asian Americans and 26.5% NHPIs in Alaska lack broadband access.

## SECTION 203

Section 203 protects voting rights of language minorities by providing “registration or voting notices, forms, instructions, assistance, or other materials or information relating to the electoral process, including ballots” in the language appropriate to the covered minority group.

Coverage determinations for each state, county or county subdivision (depending on which is the operating level of government) is made every 5 years using data from the Census Bureau’s American Community Survey.

### **COVERAGE AREAS:**

**Political Subdivision:** Aleutians West Census Area  
**Language Minority Group:** Filipino

**Political Subdivision:** Kodiak Island Borough  
**Language Minority Group:** Filipino

# 2024 AAPI Voter Demographics | ARIZONA

**231,988**

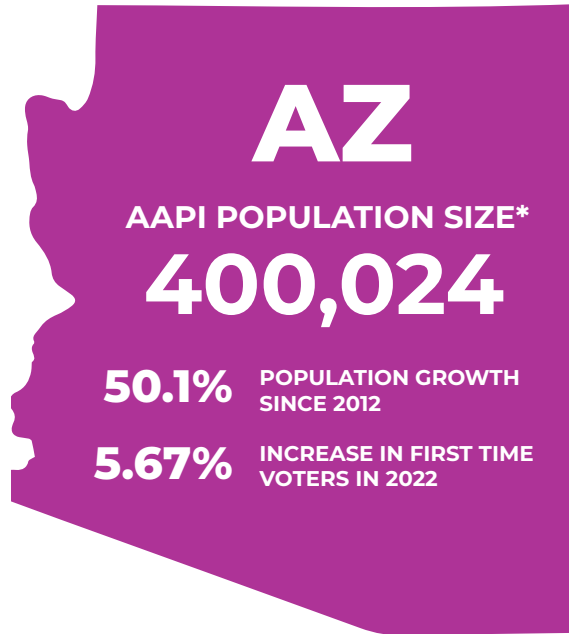
ELIGIBLE AAPI VOTERS\*

**33.5%**

AAPI VOTER ELIGIBILITY  
GROWTH (2012-2022)

**4.36%**

AAPI SHARE OF  
ELECTORATE IN ARIZONA



**74,194**

FOREIGN BORN  
NONCITIZENS

**97,221**

FOREIGN BORN  
CITIZENS

**193,571**

NATIVE BORN  
CITIZENS

*\* Includes multi-racial population*

## COUNTIES WITH HIGHEST AAPI POPULATIONS

	AAPI Share of County Pop	Size of AAPI Population	AAPI Eligible Voter Share of County	Number of AAPI Eligible Voters
Maricopa County	4.4%	195,714	6.4%	108,013
Pima County	3%	31,390	4%	19,737
Pinal County	1.9%	8,106	2.5%	5,563

## LARGEST ASIAN AMERICAN ETHNIC GROUPS IN ARIZONA

<b>Filipino</b> (79,258)	<b>Asian Indian</b> (68,957)	<b>Chinese, except Taiwanese</b> (62,390)	<b>Vietnamese</b> (36,294)	<b>Japanese</b> (29,238)	<b>Korean</b> (27,315)
-----------------------------	---------------------------------	--	-------------------------------	-----------------------------	---------------------------

## LARGEST NHPI ETHNIC GROUPS IN ARIZONA

<b>Native Hawaiian</b> (12,448)	<b>Chamorro</b> (5,321)	<b>Samoan</b> (4,623)
------------------------------------	----------------------------	--------------------------

# 2024 AAPI Voter Demographics | ARIZONA

## AAPI CITIZEN VOTING AGE POPULATION (CVAP)

**36.4%**

Voters aged 50+

**25.9%**

Voters aged 18-29

## VOTER ENGAGEMENT *(National Level Data)*

- Voter contact falls short for AAPIs. In the 2022 Asian American Voter Survey (AAVS), 56% of Asian Americans had no or uncertain contact from the Democrats. 66% reported the same from the Republicans.
- Of contacted Asian American registered voters, 44% reported outreach from Democrats, 35% from Republicans, 39% from community groups. Comparatively, in 2016, 48% reported Democratic outreach, 16% from the Republicans.
- 37% of registered Asian Americans did not identify with either party, signaling need and opportunity for voter education via outreach.

## IMPORTANCE OF LANGUAGE ACCESS

Per the 2022 AAVS, of Asian Americans speaking non-English languages at home, 11% reported language barriers to voting and 42% stated voting assistance in their language would be utilized. *(National level data).*

**51%** of Asian American adults in AZ **speak a language other than English at home.**

**22.1%** of Asian American adults in AZ are **Limited English Proficient** (speak English less than “Very well”)

**Chinese** (32,161) **Tagalog** (26,134) **Vietnamese** (21,767) **Hindi** (14,245) **Korean** (9,568)

### TOP 5 ASIAN LANGUAGES SPOKEN IN AZ

**Samoan** (957) **Chamorro** (916) **Marshallese** (434)

### TOP NHPI LANGUAGES WITH 100+ ESTIMATED SPEAKERS IN AZ

## SOCIOECONOMIC CHALLENGES IN ARIZONA



About 10.7% Asian Americans and 13.6% NHPIs in Arizona live in poverty.



About 6.8% Asian Americans and 12.5% NHPIs in Arizona lack health insurance.



About 11.4% Asian Americans and 13.3% NHPIs in Arizona lack broadband access.



# 2024 AAPI Voter Demographics | ARKANSAS

**36,803**

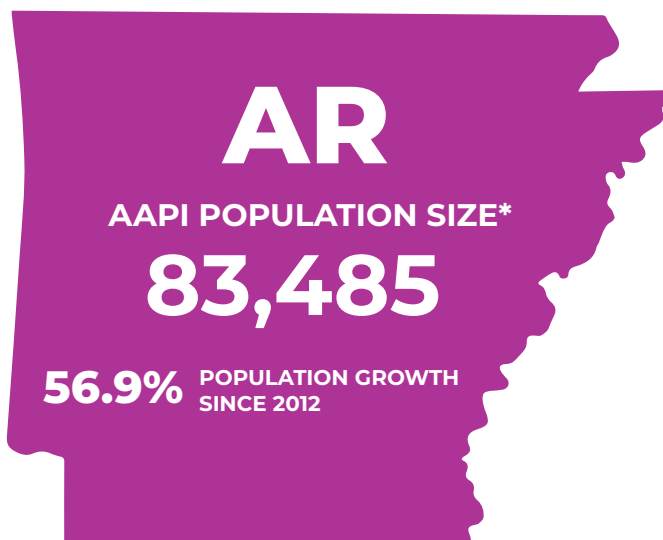
ELIGIBLE AAPI VOTERS\*

**16.3%**

AAPI VOTER ELIGIBILITY  
GROWTH (2012-2022)

**1.63%**

AAPI SHARE OF  
ELECTORATE IN ARKANSAS



**23,790**

FOREIGN BORN  
NONCITIZENS

**16,269**

FOREIGN BORN  
CITIZENS

**36,860**

NATIVE BORN  
CITIZENS

\* Includes multi-racial population

## COUNTIES WITH HIGHEST AAPI POPULATIONS

	AAPI Share of County Pop	Size of AAPI Population	AAPI Eligible Voter Share of County	Number of AAPI Eligible Voters
Benton County	4.3%	12,382	6.4%	4,471
Pulaski County	2.3%	9,063	3.1%	4,480
Washington County	3%	7,310	4.3%	4,432
Sebastian County	4.6%	5,953	6.5%	3,653

## LARGEST ASIAN AMERICAN ETHNIC GROUPS IN ARKANSAS

Asian Indian (13,274)	Filipino (10,165)	Chinese, except Taiwanese (8,069)	Vietnamese (7,442)	Laotian (6,712)	Korean (4,449)
--------------------------	----------------------	---	-----------------------	--------------------	-------------------

## LARGEST NHPI ETHNIC GROUPS IN ARKANSAS

Marshalllese (8,851)	Native Hawaiian (1,976)	Samoan (1,129)
-------------------------	----------------------------	-------------------

# 2024 AAPI Voter Demographics | ARKANSAS

## AAPI CITIZEN VOTING AGE POPULATION (CVAP)

**34.1%**

Voters aged 50+

**30%**

Voters aged 18-29

## VOTER ENGAGEMENT *(National Level Data)*

- Voter contact falls short for AAPIs. In the 2022 Asian American Voter Survey (AAVS), 56% of Asian Americans had no or uncertain contact from the Democrats. 66% reported the same from the Republicans.
- Of contacted Asian American registered voters, 44% reported outreach from Democrats, 35% from Republicans, 39% from community groups. Comparatively, in 2016, 48% reported Democratic outreach, 16% from the Republicans.
- 37% of registered Asian Americans did not identify with either party, signaling need and opportunity for voter education via outreach.

## IMPORTANCE OF LANGUAGE ACCESS

Per the 2022 AAVS, of Asian Americans speaking non-English languages at home, 11% reported language barriers to voting and 42% stated voting assistance in their language would be utilized. *(National level data).*

**53.3%** of Asian American adults in AR **speak a language other than English at home.**

**28.5%** of Asian American adults in AR are **Limited English Proficient** (speak English less than “Very well”)

**Lao** (4,408) **Chinese** (4,126) **Vietnamese** (3,686) **Tagalog** (3,308) **Telugu** (2,589)

**Marshallese** (7,267) **Samoan** (141) **Other Eastern Malayo-Polynesian languages** (132)

### TOP 5 ASIAN LANGUAGES SPOKEN IN AR

### TOP NHPI LANGUAGES WITH 100+ ESTIMATED SPEAKERS IN AR

## SOCIOECONOMIC CHALLENGES IN ARKANSAS



About 10.8% Asian Americans and 25.4% NHPIs in Arkansas live in poverty.



About 7.5% Asian Americans and 33.4% NHPIs in Arkansas lack health insurance.



About 13.2% Asian Americans and 26.1% NHPIs in Arkansas lack broadband access.

# 2024 AAPI Voter Demographics | CALIFORNIA

**4,523,427**

ELIGIBLE AAPI VOTERS\*

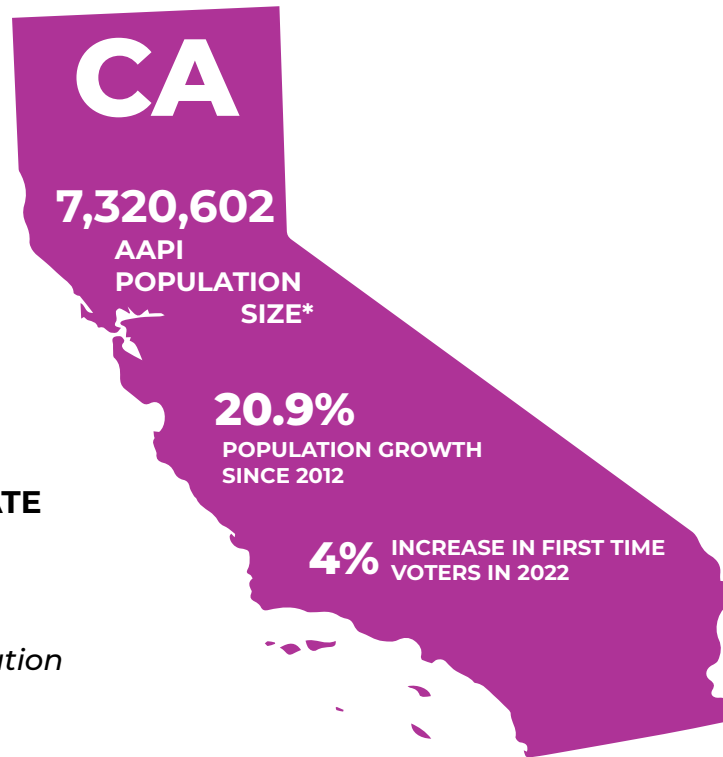
**9.3%**

AAPI VOTER ELIGIBILITY  
GROWTH (2012-2022)

**17.34%**

AAPI SHARE OF ELECTORATE  
IN CALIFORNIA

*\* Includes multi-racial population*



**1,300,802**

FOREIGN BORN  
NONCITIZENS

**2,527,558**

FOREIGN BORN  
CITIZENS

**3,335,607**

NATIVE BORN  
CITIZENS

## COUNTIES WITH HIGHEST AAPI POPULATIONS

	AAPI Share of County Pop	Size of AAPI Population	AAPI Eligible Voter Share of County	Number of AAPI Eligible Voters
Los Angeles County	15%	1,490,018	23.2%	972,381
Santa Clara County	39.2%	750,529	63.8%	407,504
Orange County	21.9%	696,160	32.7%	452,977
Alameda County	32.7%	543,466	49.2%	321,892
San Diego County	12.4%	408,318	17.7%	270,188

## LARGEST ASIAN AMERICAN ETHNIC GROUPS IN CALIFORNIA

Chinese, except Taiwanese (1,868,782)	Filipino (1,688,500)	Asian Indian (914,515)	Vietnamese (798,886)	Korean (567,411)	Japanese (480,217)
---	-------------------------	---------------------------	-------------------------	---------------------	-----------------------

## LARGEST NHPI ETHNIC GROUPS IN CALIFORNIA

Native Hawaiian (90,466)	Samoan (63,184)	Chamorro (45,863)
-----------------------------	--------------------	----------------------

# 2024 AAPI Voter Demographics | CALIFORNIA

## AAPI CITIZEN VOTING AGE POPULATION (CVAP)

**43.9%**  
Voters aged 50+

**20.6%**  
Voters aged 18-29

## VOTER ENGAGEMENT *(National Level Data)*

- Voter contact falls short for AAPIs. In the 2022 Asian American Voter Survey (AAVS), 56% of Asian Americans had no or uncertain contact from the Democrats. 66% reported the same from the Republicans.
- Of contacted Asian American registered voters, 44% reported outreach from Democrats, 35% from Republicans, 39% from community groups. Comparatively, in 2016, 48% reported Democratic outreach, 16% from the Republicans.
- 37% of registered Asian Americans did not identify with either party, signaling need and opportunity for voter education via outreach.

## IMPORTANCE OF LANGUAGE ACCESS

Per the 2022 AAVS, of Asian Americans speaking non-English languages at home, 11% reported language barriers to voting and 42% stated voting assistance in their language would be utilized. *(National level data).*

**61.8%** of Asian American adults in CA **speak a language other than English at home.**

**33.7%** of Asian American adults in CA are **Limited English Proficient** (speak English less than “Very well”)

**Chinese** (1,254,020) **Tagalog** (765,913) **Vietnamese** (563,552) **Korean** (355,753) **Hindi** (179,378)

**Samoan** (14,987) **Tongan** (10,935) **Other Eastern Malayo-Polynesian languages** (6,034)

### TOP 5 ASIAN LANGUAGES SPOKEN IN CA

### TOP NHPI LANGUAGES WITH 100+ ESTIMATED SPEAKERS IN CA

## SOCIOECONOMIC CHALLENGES IN CALIFORNIA



About 9.4% Asian Americans and 12% NHPIs in California live in poverty.



About 4% Asian Americans and 6.1% NHPIs in California lack health insurance.



About 11.7% Asian Americans and 15.8% NHPIs in California lack broadband access.

## SECTION 203

Section 203 protects voting rights of language minorities by providing “registration or voting notices, forms, instructions, assistance, or other materials or information relating to the electoral process, including ballots” in the language appropriate to the covered minority group.

Coverage determinations for each state, county or county subdivision (depending on which is the operating level of government) is made every 5 years using data from the Census Bureau’s American Community Survey.

### **COVERAGE AREAS:**

**Political Subdivision:** Alameda County

**Language Minority Group:** Chinese (including Taiwanese), Filipino, Vietnamese

**Political Subdivision:** Contra Costa County

**Language Minority Group:** Chinese (including Taiwanese)

**Political Subdivision:** Los Angeles County

**Language Minority Group:** Cambodian, Chinese (Taiwanese), Filipino, Korean, Vietnamese

**Political Subdivision:** Orange County

**Language Minority Group:** Chinese (including Taiwanese), Korean, Vietnamese

**Political Subdivision:** Sacramento County

**Language Minority Group:** Chinese (including Taiwanese), Vietnamese

**Political Subdivision:** San Diego County

**Language Minority Group:** Chinese (including Taiwanese), Filipino, Vietnamese

**Political Subdivision:** San Francisco County

**Language Minority Group:** Chinese (including Taiwanese)

**Political Subdivision:** San Mateo

**Language Minority Group:** Chinese (including Taiwanese), Filipino

**Political Subdivision:** Santa Clara County

**Language Minority Group:** Chinese (including Taiwanese), Filipino, Vietnamese

# 2024 AAPI Voter Demographics | COLORADO

**181,565**

ELIGIBLE AAPI VOTERS\*

**30.9%**

AAPI VOTER ELIGIBILITY  
GROWTH (2012-2022)

**4.15%**

AAPI SHARE OF  
ELECTORATE IN COLORADO

**CO**

AAPI POPULATION SIZE\*

**312,704**

**46.8%** POPULATION  
GROWTH SINCE 2010

**51,165**

FOREIGN BORN  
NONCITIZENS

**73,244**

FOREIGN BORN  
CITIZENS

**163,059**

NATIVE BORN  
CITIZENS

\* Includes multi-racial population

## COUNTIES WITH HIGHEST AAPI POPULATIONS

	AAPI Share of County Pop	Size of AAPI Population	AAPI Eligible Voter Share of County	Number of AAPI Eligible Voters
Arapahoe County	6.3%	41,196	9%	22,889
Denver County	3.6%	25,906	4.9%	16,110
El Paso County	3%	22,033	4.1%	15,134
Adams County	4.1%	21,126	6.2%	12,068
Douglas County	5.4%	19,508	7.5%	9,877

## LARGEST ASIAN AMERICAN ETHNIC GROUPS IN COLORADO

Chinese, except Taiwanese (49,363)	Filipino (41,555)	Asian Indian (37,303)	Korean (36,930)	Vietnamese (33,770)	Japanese (28,213)
--	----------------------	--------------------------	--------------------	------------------------	----------------------

## LARGEST NHPI ETHNIC GROUPS IN COLORADO

Native Hawaiian (8,950)	Chamorro (4,054)	Samoan (3,019)
----------------------------	---------------------	-------------------

# 2024 AAPI Voter Demographics | COLORADO

## AAPI CITIZEN VOTING AGE POPULATION (CVAP)

**32.3%**

Voters aged 50+

**27.8%**

Voters aged 18-29

## VOTER ENGAGEMENT *(National Level Data)*

- Voter contact falls short for AAPIs. In the 2022 Asian American Voter Survey (AAVS), 56% of Asian Americans had no or uncertain contact from the Democrats. 66% reported the same from the Republicans.
- Of contacted Asian American registered voters, 44% reported outreach from Democrats, 35% from Republicans, 39% from community groups. Comparatively, in 2016, 48% reported Democratic outreach, 16% from the Republicans.
- 37% of registered Asian Americans did not identify with either party, signaling need and opportunity for voter education via outreach.

## IMPORTANCE OF LANGUAGE ACCESS

Per the 2022 AAVS, of Asian Americans speaking non-English languages at home, 11% reported language barriers to voting and 42% stated voting assistance in their language would be utilized. *(National level data).*

**45.5%** of Asian American adults in CO **speak a language other than English at home.**

**24.1%** of Asian American adults in CO are **Limited English Proficient** (speak English less than "Very well")

**Chinese** (23,285) **Vietnamese** (19,870) **Korean** (13,060) **Tagalog** (8,526) **Hindi** (8,232)

**Chamorro** (657) **Other Eastern Malayo-Polynesian languages** (453) **Samoan** (313)

### TOP 5 ASIAN LANGUAGES SPOKEN IN CO

### TOP NHPI LANGUAGES WITH 100+ ESTIMATED SPEAKERS IN CO

## SOCIOECONOMIC CHALLENGES IN COLORADO



About 8.7% Asian Americans and 10.9% NHPIs in Colorado live in poverty.



About 6.8% Asian Americans and 9% NHPIs in Colorado lack health insurance.



About 9.8% Asian Americans and 23.8% NHPIs in Colorado lack broadband access.

# 2024 AAPI Voter Demographics | CONNECTICUT

**109,084**

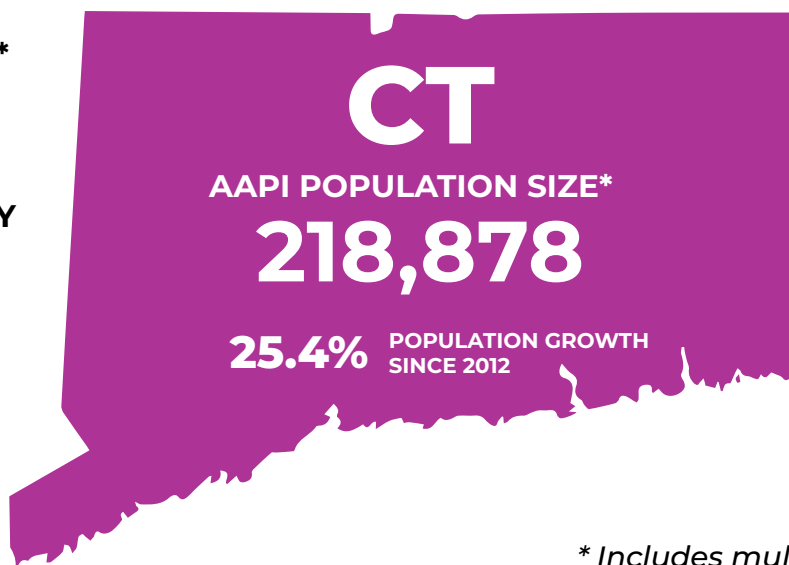
ELIGIBLE AAPI VOTERS\*

**14.3%**

AAPI VOTER ELIGIBILITY  
GROWTH (2012-2022)

**4.08%**

AAPI SHARE OF  
ELECTORATE IN  
CONNECTICUT



**54,187**

FOREIGN BORN  
NONCITIZENS

**67,474**

FOREIGN BORN  
CITIZENS

**89,290**

NATIVE BORN  
CITIZENS

*\* Includes multi-racial population*

## COUNTIES WITH HIGHEST AAPI POPULATIONS

	AAPI Share of County Pop	Size of AAPI Population	AAPI Eligible Voter Share of County	Number of AAPI Eligible Voters
Capitol Planning Region	5.9%	57,208	7.9%	25,360
Western Connecticut Planning Region	5.2%	32,492	7.7%	17,085
South Central Connecticut Planning Region	4.3%	24,652	5.8%	13,266
Naugatuck Valley Planning Region	4.1%	18,409	5.5%	10,872
Greater Bridgeport Planning Region	5.5%	17,967	8%	9,370

## LARGEST ASIAN AMERICAN ETHNIC GROUPS IN CONNECTICUT

<b>Asian Indian</b> (66,768)	<b>Chinese, except Taiwanese</b> (48,522)	<b>Filipino</b> (21,195)	<b>Korean</b> (15,175)	<b>Vietnamese</b> (12,756)	<b>Pakistani</b> (9,649)
---------------------------------	--	-----------------------------	---------------------------	-------------------------------	-----------------------------

## LARGEST NHPI ETHNIC GROUPS IN CONNECTICUT

<b>Native Hawaiian</b> (1,058)	<b>Samoan</b> (646)	<b>Chamorro</b> (496)
-----------------------------------	------------------------	--------------------------



# 2024 AAPI Voter Demographics | CONNECTICUT

## AAPI CITIZEN VOTING AGE POPULATION (CVAP)

**36.7%**

Voters aged 50+

**26.4%**

Voters aged 18-29

## VOTER ENGAGEMENT *(National Level Data)*

- Voter contact falls short for AAPIs. In the 2022 Asian American Voter Survey (AAVS), 56% of Asian Americans had no or uncertain contact from the Democrats. 66% reported the same from the Republicans.
- Of contacted Asian American registered voters, 44% reported outreach from Democrats, 35% from Republicans, 39% from community groups. Comparatively, in 2016, 48% reported Democratic outreach, 16% from the Republicans.
- 37% of registered Asian Americans did not identify with either party, signaling need and opportunity for voter education via outreach.

## IMPORTANCE OF LANGUAGE ACCESS

Per the 2022 AAVS, of Asian Americans speaking non-English languages at home, 11% reported language barriers to voting and 42% stated voting assistance in their language would be utilized. *(National level data).*

**60.0%** of Asian American adults in CT **speak a language other than English at home.**

**29.3%** of Asian American adults in CT are **Limited English Proficient** (speak English less than “Very well”)

**Chinese** (29,750)   **Hindi** (9,894)   **Vietnamese** (8,127)   **Gujarati** (7,960)   **Tagalog** (7,883)

### TOP 5 ASIAN LANGUAGES SPOKEN IN CT

**Samoan** (104)

### TOP NHPI LANGUAGE WITH 100+ ESTIMATED SPEAKERS IN CT

## SOCIOECONOMIC CHALLENGES IN CONNECTICUT



About 8.8% Asian Americans and 14.7% NHPIs in Connecticut live in poverty.



About 5.2% Asian Americans and 7.6% NHPIs in Connecticut lack health insurance.



About 10.4% Asian Americans and 19.2% NHPIs in Connecticut lack broadband access.

# 2024 AAPI Voter Demographics | DELAWARE

**28,015**

ELIGIBLE AAPI VOTERS\*

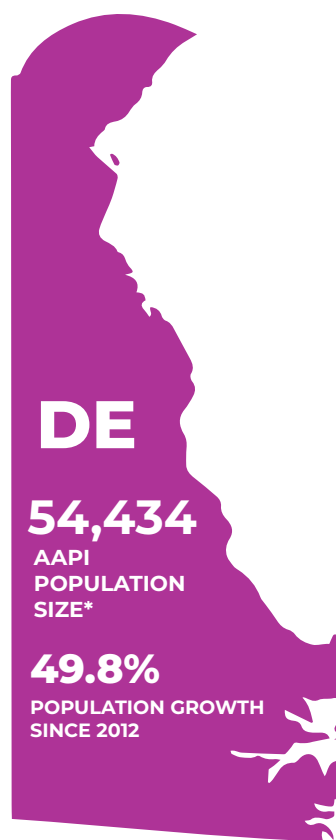
**25.6%**

AAPI VOTER ELIGIBILITY  
GROWTH (2012-2022)

**3.63%**

AAPI SHARE OF  
ELECTORATE IN DELAWARE

*\* Includes multi-racial population*



**14,180**

FOREIGN BORN  
NONCITIZENS

**17,044**

FOREIGN BORN  
CITIZENS

**19,024**

NATIVE BORN  
CITIZENS

## COUNTIES WITH HIGHEST AAPI POPULATIONS

	AAPI Share of County Pop	Size of AAPI Population	AAPI Eligible Voter Share of County	Number of AAPI Eligible Voters
New Castle County	5.9%	33,392	7.9%	15,403

## LARGEST ASIAN AMERICAN ETHNIC GROUPS IN DELAWARE

Asian Indian (18,037)	Chinese, except Taiwanese (9,683)	Filipino (6,868)	Korean (2,878)	Vietnamese (2,824)	Pakistani (2,678)
--------------------------	---	---------------------	-------------------	-----------------------	----------------------

## LARGEST NHPI ETHNIC GROUPS IN DELAWARE

Native Hawaiian (449)	Chamorro (139)	Samoan (135)
--------------------------	-------------------	-----------------

# 2024 AAPI Voter Demographics | DELAWARE

## AAPI CITIZEN VOTING AGE POPULATION (CVAP)

41.9%

Voters aged 50+

20.5%

Voters aged 18-29

## VOTER ENGAGEMENT *(National Level Data)*

- Voter contact falls short for AAPIs. In the 2022 Asian American Voter Survey (AAVS), 56% of Asian Americans had no or uncertain contact from the Democrats. 66% reported the same from the Republicans.
- Of contacted Asian American registered voters, 44% reported outreach from Democrats, 35% from Republicans, 39% from community groups. Comparatively, in 2016, 48% reported Democratic outreach, 16% from the Republicans.
- 37% of registered Asian Americans did not identify with either party, signaling need and opportunity for voter education via outreach.

## IMPORTANCE OF LANGUAGE ACCESS

Per the 2022 AAVS, of Asian Americans speaking non-English languages at home, 11% reported language barriers to voting and 42% stated voting assistance in their language would be utilized. *(National level data).*

**62.7%** of Asian American adults in DE **speak a language other than English at home.**

**28.6%** of Asian American adults in DE are **Limited English Proficient** (speak English less than “Very well”)

<b>Chinese</b> (8,313)	<b>Hindi</b> (3,143)	<b>Tagalog</b> (2,884)	<b>Gujarati</b> (2,426)	<b>Tamil</b> (1,808)
---------------------------	-------------------------	---------------------------	----------------------------	-------------------------

## TOP 5 ASIAN LANGUAGES SPOKEN IN DELAWARE

## SOCIOECONOMIC CHALLENGES IN DELAWARE



About 7.3% Asian Americans and 17% NHPs in Delaware live in poverty.



About 4.4% Asian Americans and 3.8% NHPs in Delaware lack health insurance.



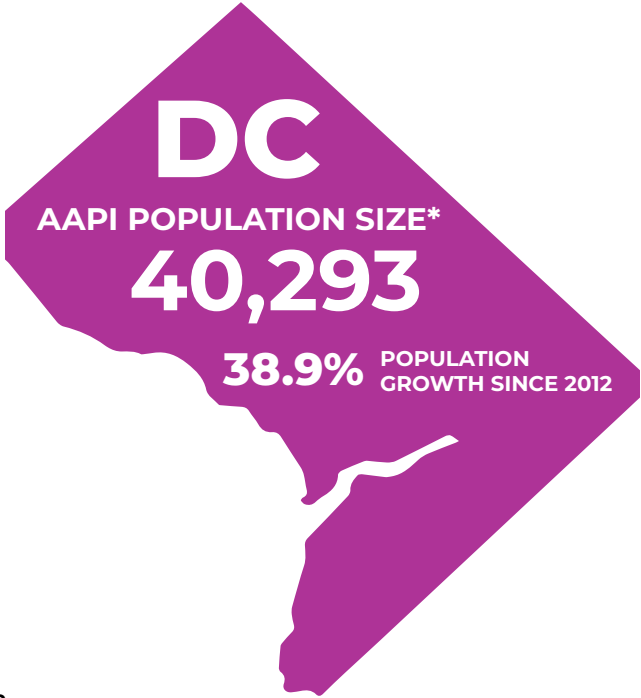
About 7.5% Asian Americans and 15.9% NHPs in Delaware lack broadband access.

# 2024 AAPI Voter Demographics | WASHINGTON D.C.

**25,813**  
ELIGIBLE AAPI VOTERS\*

**24%**  
AAPI VOTER ELIGIBILITY  
GROWTH (2012-2022)

**5.11%**  
AAPI SHARE OF  
ELECTORATE IN  
WASHINGTON D.C.



**7,649**  
FOREIGN BORN  
NONCITIZENS

**9,432**  
FOREIGN BORN  
CITIZENS

**21,021**  
NATIVE BORN  
CITIZENS

*\* Includes multi-racial population*

## COUNTIES WITH HIGHEST AAPI POPULATIONS

	AAPI Share of County Pop	Size of AAPI Population	AAPI Eligible Voter Share of County	Number of AAPI Eligible Voters
District of Columbia	4.1%	27,431	5.4%	18,388

## LARGEST ASIAN AMERICAN ETHNIC GROUPS IN WASHINGTON D.C.

Asian Indian (9,497)	Chinese, except Taiwanese (9,401)	Korean (4,502)	Filipino (3,831)	Vietnamese (2,763)	Japanese (2,719)
-------------------------	---	-------------------	---------------------	-----------------------	---------------------

## LARGEST NHPI ETHNIC GROUPS IN WASHINGTON D.C.

Native Hawaiian (621)	Chamorro (163)	Samoan (62)
--------------------------	-------------------	----------------

# 2024 AAPI Voter Demographics | WASHINGTON D.C.

## AAPI CITIZEN VOTING AGE POPULATION (CVAP)

**21.6%**  
Voters aged 50+

**30%**  
Voters aged 18-29

## VOTER ENGAGEMENT *(National Level Data)*

- Voter contact falls short for AAPIs. In the 2022 Asian American Voter Survey (AAVS), 56% of Asian Americans had no or uncertain contact from the Democrats. 66% reported the same from the Republicans.
- Of contacted Asian American registered voters, 44% reported outreach from Democrats, 35% from Republicans, 39% from community groups. Comparatively, in 2016, 48% reported Democratic outreach, 16% from the Republicans.
- 37% of registered Asian Americans did not identify with either party, signaling need and opportunity for voter education via outreach.

## IMPORTANCE OF LANGUAGE ACCESS

Per the 2022 AAVS, of Asian Americans speaking non-English languages at home, 11% reported language barriers to voting and 42% stated voting assistance in their language would be utilized. *(National level data).*

**43.8%** of Asian American adults in DC **speak a language other than English at home.**

**14.8%** of Asian American adults in DC are **Limited English Proficient** (speak English less than “Very well”)

<b>Chinese</b> (4,933)	<b>Korean</b> (1,646)	<b>Hindi</b> (1,348)	<b>Tagalog</b> (1,288)	<b>Japanese</b> (954)
---------------------------	--------------------------	-------------------------	---------------------------	--------------------------

### TOP 5 ASIAN LANGUAGES SPOKEN IN DC

## SOCIOECONOMIC CHALLENGES IN WASHINGTON D.C.



About 11% Asian Americans and 18.7% NHPs in DC live in poverty.



About 3.7% Asian Americans and 5.5% NHPs in DC lack health insurance.



About 7.5% Asian Americans and 16.6% NHPs in DC lack broadband access.

# 2024 AAPI Voter Demographics | FLORIDA

**534,600**

ELIGIBLE AAPI VOTERS\*

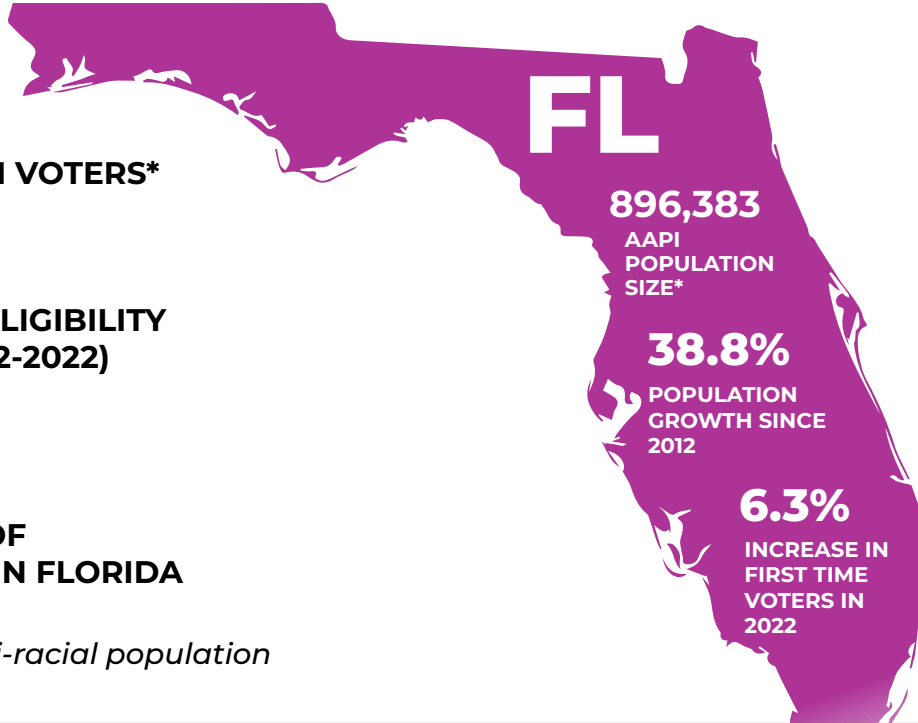
**29.8%**

AAPI VOTER ELIGIBILITY  
GROWTH (2012-2022)

**3.31%**

AAPI SHARE OF  
ELECTORATE IN FLORIDA

*\* Includes multi-racial population*



**163,819**

FOREIGN BORN  
NONCITIZENS

**301,596**

FOREIGN BORN  
CITIZENS

**374,749**

NATIVE BORN  
CITIZENS

## COUNTIES WITH HIGHEST AAPI POPULATIONS

	AAPI Share of County Pop	Size of AAPI Population	AAPI Eligible Voter Share of County	Number of AAPI Eligible Voters
Orange County	5.3%	76,275	7.8%	46,424
Broward County	3.7%	72,264	5.5%	44,111
Hillsborough County	4.3%	63,668	6.2%	33,480
Duval County	4.8%	47,562	6.5%	28,189
Palm Beach County	2.9%	42,715	4%	26,353

## LARGEST ASIAN AMERICAN ETHNIC GROUPS IN FLORIDA

Asian Indian (209,886)	Filipino (171,931)	Chinese, except Taiwanese (143,181)	Vietnamese (100,942)	Korean (44,662)	Japanese (40,015)
---------------------------	-----------------------	---	-------------------------	--------------------	----------------------

## LARGEST NHPI ETHNIC GROUPS IN FLORIDA

Native Hawaiian (11,077)	Chamorro (4,821)	Samoan (4,389)
-----------------------------	---------------------	-------------------

# 2024 AAPI Voter Demographics | FLORIDA

## AAPI CITIZEN VOTING AGE POPULATION (CVAP)

**42.1%**

Voters aged 50+

**22.4%**

Voters aged 18-29

## VOTER ENGAGEMENT *(National Level Data)*

- Voter contact falls short for AAPIs. In the 2022 Asian American Voter Survey (AAVS), 56% of Asian Americans had no or uncertain contact from the Democrats. 66% reported the same from the Republicans.
- Of contacted Asian American registered voters, 44% reported outreach from Democrats, 35% from Republicans, 39% from community groups. Comparatively, in 2016, 48% reported Democratic outreach, 16% from the Republicans.
- 37% of registered Asian Americans did not identify with either party, signaling need and opportunity for voter education via outreach.

## IMPORTANCE OF LANGUAGE ACCESS

Per the 2022 AAVS, of Asian Americans speaking non-English languages at home, 11% reported language barriers to voting and 42% stated voting assistance in their language would be utilized. *(National level data).*

**53.5%** of Asian American adults in FL **speak a language other than English at home.**

**26%** of Asian American adults in FL are **Limited English Proficient** (speak English less than “Very well”)

**Chinese** (71,869) **Vietnamese** (67,137) **Tagalog** (66,951) **Hindi** (29,607) **Gujarati** (22,473)

**Other Eastern Malayo-Polynesian languages** (818) **Chamorro** (613) **Samoan** (286)

### TOP 5 ASIAN LANGUAGES SPOKEN IN FL

### TOP NHPI LANGUAGES WITH 100+ ESTIMATED SPEAKERS IN FL

## SOCIOECONOMIC CHALLENGES IN FLORIDA



About 10.7% Asian Americans and 13.9% NHPIs in Florida live in poverty.



About 9.9% Asian Americans and 16.6% NHPIs in Florida lack health insurance.



About 11.7% Asian Americans and 15.7% NHPIs in Florida lack broadband access.

# 2024 AAPI Voter Demographics | GEORGIA

**328,471**

ELIGIBLE AAPI VOTERS\*

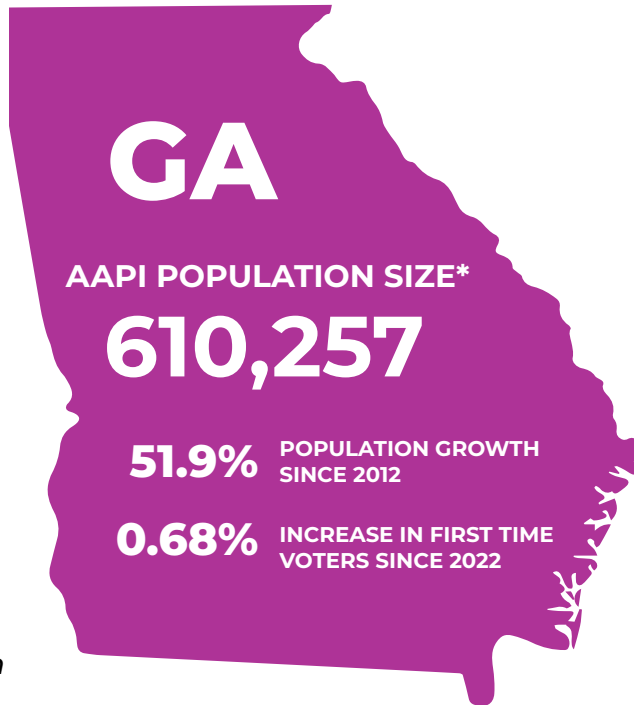
**42.3%**

AAPI VOTER ELIGIBILITY  
GROWTH (2012-2022)

**4.16%**

AAPI SHARE OF  
ELECTORATE IN GEORGIA

*\* Includes multi-racial population*



**151,565**

FOREIGN BORN  
NONCITIZENS

**181,530**

FOREIGN BORN  
CITIZENS

**238,132**

NATIVE BORN  
CITIZENS

## COUNTIES WITH HIGHEST AAPI POPULATIONS

	AAPI Share of County Pop	Size of AAPI Population	AAPI Eligible Voter Share of County	Number of AAPI Eligible Voters
Gwinnett County	12.8%	122,482	20.7%	65,695
Fulton County	7.6%	80,882	10.5%	38,387
DeKalb County	6.2%	47,549	8.9%	21,275
Cobb County	5.6%	42,946	8%	22,134
Forsyth County	16.6%	42,032	25.9%	14,553

## LARGEST ASIAN AMERICAN ETHNIC GROUPS IN GEORGIA

<b>Asian Indian</b> (177,310)	<b>Chinese, except Taiwanese</b> (80,468)	<b>Korean</b> (73,280)	<b>Vietnamese</b> (72,518)	<b>Filipino</b> (51,636)	<b>Japanese</b> (23,741)
----------------------------------	--	---------------------------	-------------------------------	-----------------------------	-----------------------------

## LARGEST NHPI ETHNIC GROUPS IN GEORGIA

<b>Native Hawaiian</b> (7,556)	<b>Chamorro</b> (3,659)	<b>Samoan</b> (2,276)
-----------------------------------	----------------------------	--------------------------



# 2024 AAPI Voter Demographics | GEORGIA

## AAPI CITIZEN VOTING AGE POPULATION (CVAP)

**36.8%**

Voters aged 50+

**24.9%**

Voters aged 18-29

## VOTER ENGAGEMENT *(National Level Data)*

- Voter contact falls short for AAPIs. In the 2022 Asian American Voter Survey (AAVS), 56% of Asian Americans had no or uncertain contact from the Democrats. 66% reported the same from the Republicans.
- Of contacted Asian American registered voters, 44% reported outreach from Democrats, 35% from Republicans, 39% from community groups. Comparatively, in 2016, 48% reported Democratic outreach, 16% from the Republicans.
- 37% of registered Asian Americans did not identify with either party, signaling need and opportunity for voter education via outreach.

## IMPORTANCE OF LANGUAGE ACCESS

Per the 2022 AAVS, of Asian Americans speaking non-English languages at home, 11% reported language barriers to voting and 42% stated voting assistance in their language would be utilized. *(National level data).*

**64.5%** of Asian American adults in GA **speak a language other than English at home.**

**33.9%** of Asian American adults in GA are **Limited English Proficient** (speak English less than “Very well”)

**Vietnamese** (56,572) **Chinese** (54,776) **Korean** (46,592) **Hindi** (32,636) **Gujarati** (22,225)

**Other Eastern Malayo-Polynesian languages** (1,017) **Samoan** (304) **Chamorro** (257)

### TOP 5 ASIAN LANGUAGES SPOKEN IN GA

### TOP NHPI LANGUAGES WITH 100+ ESTIMATED SPEAKERS IN GA

## SOCIOECONOMIC CHALLENGES IN GEORGIA



About 9.4% Asian Americans and 15% NHPIs in Georgia live in poverty.



About 9.2% Asian Americans and 16% NHPIs in Georgia lack health insurance.



About 10.5% Asian Americans and 14.5% NHPIs in Georgia lack broadband access.

# 2024 AAPI Voter Demographics | HAWAII

**706,422**

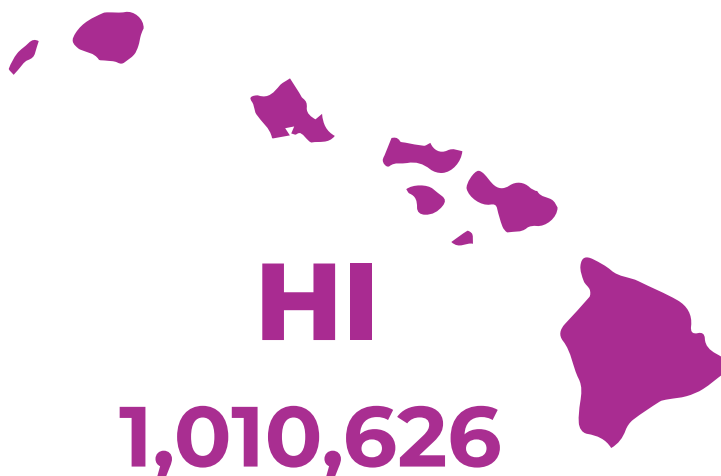
ELIGIBLE AAPI VOTERS\*

**-6.6%**

AAPI VOTER ELIGIBILITY  
GROWTH (2012-2022)

**66.98%**

AAPI SHARE OF  
ELECTORATE IN HAWAII



**3.7%** POPULATION GROWTH  
SINCE 2012

**91,841**

FOREIGN BORN  
NONCITIZENS

**138,976**

FOREIGN BORN  
CITIZENS

**793,974**

NATIVE BORN  
CITIZENS

\* Includes multi-racial population

## COUNTIES WITH HIGHEST AAPI POPULATIONS

	AAPI Share of County Pop	Size of AAPI Population	AAPI Eligible Voter Share of County	Number of AAPI Eligible Voters
Honolulu County	48.2%	487,316	66.6%	384,079
Hawaii County	30.1%	60,808	41.1%	49,911
Maui County	35.1%	57,818	49.1%	43,444
Kauai County	35.8%	26,327	49.7%	20,319

## LARGEST ASIAN AMERICAN ETHNIC GROUPS IN HAWAII

<b>Filipino</b> (368,734)	<b>Japanese</b> (321,528)	<b>Chinese, except Taiwanese</b> (220,416)	<b>Korean</b> (52,810)	<b>Vietnamese</b> (17,032)	<b>Okinawan</b> (10,403)
------------------------------	------------------------------	---	---------------------------	-------------------------------	-----------------------------

## LARGEST NHPI ETHNIC GROUPS IN HAWAII

<b>Native Hawaiian</b> (314,128)	<b>Samoan</b> (36,473)	<b>Other Micronesian</b> (18,534)
-------------------------------------	---------------------------	--------------------------------------

# 2024 AAPI Voter Demographics | HAWAII

## AAPI CITIZEN VOTING AGE POPULATION (CVAP)

**49.8%**

Voters aged 50+

**18.8%**

Voters aged 18-29

## VOTER ENGAGEMENT *(National Level Data)*

- Voter contact falls short for AAPIs. In the 2022 Asian American Voter Survey (AAVS), 56% of Asian Americans had no or uncertain contact from the Democrats. 66% reported the same from the Republicans.
- Of contacted Asian American registered voters, 44% reported outreach from Democrats, 35% from Republicans, 39% from community groups. Comparatively, in 2016, 48% reported Democratic outreach, 16% from the Republicans.
- 37% of registered Asian Americans did not identify with either party, signaling need and opportunity for voter education via outreach.

## IMPORTANCE OF LANGUAGE ACCESS

Per the 2022 AAVS, of Asian Americans speaking non-English languages at home, 11% reported language barriers to voting and 42% stated voting assistance in their language would be utilized. *(National level data).*

**30.2%** of Asian American adults in HI **speak a language other than English at home.**

**16%** of Asian American adults in HI are **Limited English Proficient** (speak English less than “Very well”)

**Ilocano** (59,825) **Tagalog** (57,427) **Japanese** (36,255) **Chinese** (34,285) **Korean** (15,841)

### TOP 5 ASIAN LANGUAGES SPOKEN IN HI

**Hawaiian** (24,390) **Samoan** (10,034) **Chuukese** (8,160)

### TOP NHPI LANGUAGES WITH 100+ ESTIMATED SPEAKERS IN HI

## SOCIOECONOMIC CHALLENGES IN HAWAII



About 7.7% Asian Americans and 14.4% NHPIs in Hawaii live in poverty.



About 3.3% Asian Americans and 4.4% NHPIs in Hawaii lack health insurance.



About 13.3% Asian Americans and 17.4% NHPIs in Hawaii lack broadband access.

## SECTION 203

Section 203 protects voting rights of language minorities by providing “registration or voting notices, forms, instructions, assistance, or other materials or information relating to the electoral process, including ballots” in the language appropriate to the covered minority group.

Coverage determinations for each state, county or county subdivision (depending on which is the operating level of government) is made every 5 years using data from the Census Bureau’s American Community Survey.

### **COVERAGE AREAS:**

**Political Subdivision:** Honolulu County

**Language Minority Group:** Chinese (including Taiwanese), Filipino

**Political Subdivision:** Maui County

**Language Minority Group:** Filipino

# 2024 AAPI Voter Demographics | IDAHO

**30,534**

ELIGIBLE AAPI VOTERS\*

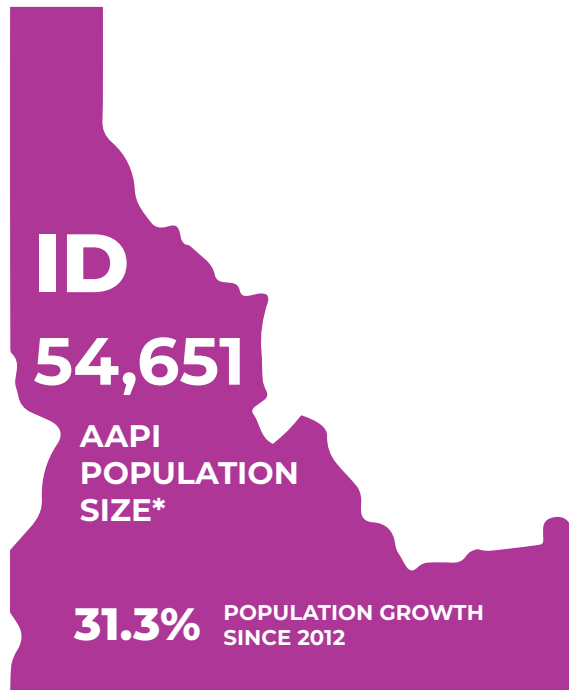
**15.3%**

AAPI VOTER ELIGIBILITY  
GROWTH (2012-2022)

**2.16%**

AAPI SHARE OF  
ELECTORATE IN IDAHO

*\* Includes multi-racial population*



**6,637**

FOREIGN BORN  
NONCITIZENS

**9,920**

FOREIGN BORN  
CITIZENS

**35,697**

NATIVE BORN  
CITIZENS

## COUNTIES WITH HIGHEST AAPI POPULATIONS

	AAPI Share of County Pop	Size of AAPI Population	AAPI Eligible Voter Share of County	Number of AAPI Eligible Voters
Ada County	2.8%	13,687	3.7%	7,852

## LARGEST ASIAN AMERICAN ETHNIC GROUPS IN IDAHO

<b>Filipino</b> (10,612)	<b>Japanese</b> (9,926)	<b>Chinese, except Taiwanese</b> (7,795)	<b>Korean</b> (4,665)	<b>Asian Indian</b> (3,760)	<b>Vietnamese</b> (2,573)
-----------------------------	----------------------------	---	--------------------------	--------------------------------	------------------------------

## LARGEST NHPI ETHNIC GROUPS IN IDAHO

<b>Native Hawaiian</b> (3,431)	<b>Samoan</b> (1,079)	<b>Tongan</b> (646)
-----------------------------------	--------------------------	------------------------

# 2024 AAPI Voter Demographics | IDAHO

## AAPI CITIZEN VOTING AGE POPULATION (CVAP)

**31.2%**

Voters aged 50+

**29.1%**

Voters aged 18-29

## VOTER ENGAGEMENT *(National Level Data)*

- Voter contact falls short for AAPIs. In the 2022 Asian American Voter Survey (AAVS), 56% of Asian Americans had no or uncertain contact from the Democrats. 66% reported the same from the Republicans.
- Of contacted Asian American registered voters, 44% reported outreach from Democrats, 35% from Republicans, 39% from community groups. Comparatively, in 2016, 48% reported Democratic outreach, 16% from the Republicans.
- 37% of registered Asian Americans did not identify with either party, signaling need and opportunity for voter education via outreach.

## IMPORTANCE OF LANGUAGE ACCESS

Per the 2022 AAVS, of Asian Americans speaking non-English languages at home, 11% reported language barriers to voting and 42% stated voting assistance in their language would be utilized. *(National level data).*

**33.8%** of Asian American adults in ID **speak a language other than English at home.**

**17.3%** of Asian American adults in ID are **Limited English Proficient** (speak English less than “Very well”)

**Chinese** (3,623) **Tagalog** (1,805) **Vietnamese** (1,412) **Korean** (1,252) **Lao** (1,222)

### TOP 5 ASIAN LANGUAGES SPOKEN IN ID

**Tongan** (269) **Samoan** (123)

### TOP NHPI LANGUAGES WITH 100+ ESTIMATED SPEAKERS IN ID

## SOCIOECONOMIC CHALLENGES IN IDAHO



About 13% Asian Americans and 22.2% NHPIs in Idaho live in poverty.



About 7.7% Asian Americans and 16.4% NHPIs in Idaho lack health insurance.



About 15.7% Asian Americans and 27.8% NHPIs in Idaho lack broadband access.

# 2024 AAPI Voter Demographics | ILLINOIS

**502,043**

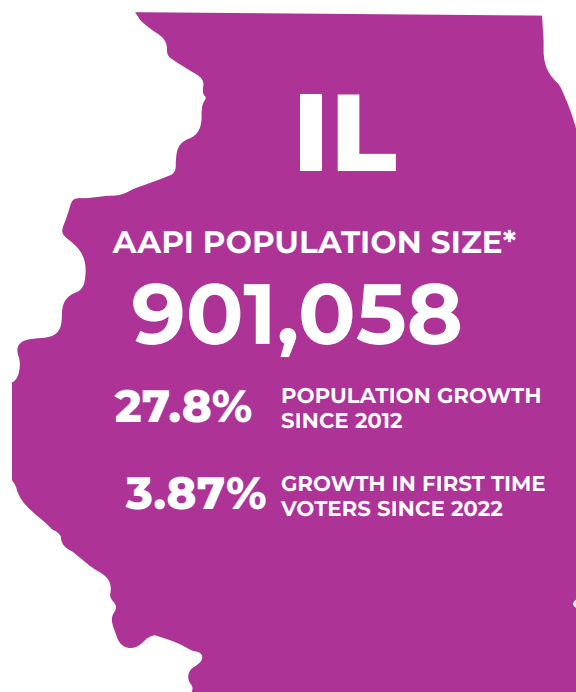
ELIGIBLE AAPI VOTERS\*

**17.8%**

AAPI VOTER ELIGIBILITY  
GROWTH (2012-2022)

**5.53%**

AAPI SHARE OF  
ELECTORATE IN ILLINOIS



**205,221**

FOREIGN BORN  
NONCITIZENS

**302,771**

FOREIGN BORN  
CITIZENS

**368,897**

NATIVE BORN  
CITIZENS

\* Includes multi-racial population

## COUNTIES WITH HIGHEST AAPI POPULATIONS

	AAPI Share of County Pop	Size of AAPI Population	AAPI Eligible Voter Share of County	Number of AAPI Eligible Voters
Cook County	7.7%	404,562	11.2%	232,511
DuPage County	12.6%	117,059	17.9%	66,337
Lake County	8.5%	60,476	12.4%	30,137
Will County	5.9%	41,280	8.4%	25,097
Champaign County	11%	22,742	15%	9,200

## LARGEST ASIAN AMERICAN ETHNIC GROUPS IN ILLINOIS

Asian Indian (274,428)	Filipino (169,520)	Chinese, except Taiwanese (156,207)	Korean (73,081)	Pakistani (45,916)	Vietnamese (37,590)
---------------------------	-----------------------	---	--------------------	-----------------------	------------------------

## LARGEST NHPI ETHNIC GROUPS IN ILLINOIS

Native Hawaiian (6,475)	Samoan (2,221)	Chamorro (1,556)
----------------------------	-------------------	---------------------

# 2024 AAPI Voter Demographics | ILLINOIS

## AAPI CITIZEN VOTING AGE POPULATION (CVAP)

**40.3%**

Voters aged 50+

**22.4%**

Voters aged 18-29

## VOTER ENGAGEMENT *(National Level Data)*

- Voter contact falls short for AAPIs. In the 2022 Asian American Voter Survey (AAVS), 56% of Asian Americans had no or uncertain contact from the Democrats. 66% reported the same from the Republicans.
- Of contacted Asian American registered voters, 44% reported outreach from Democrats, 35% from Republicans, 39% from community groups. Comparatively, in 2016, 48% reported Democratic outreach, 16% from the Republicans.
- 37% of registered Asian Americans did not identify with either party, signaling need and opportunity for voter education via outreach.

## IMPORTANCE OF LANGUAGE ACCESS

Per the 2022 AAVS, of Asian Americans speaking non-English languages at home, 11% reported language barriers to voting and 42% stated voting assistance in their language would be utilized. *(National level data).*

**63.6%** of Asian American adults in IL **speak a language other than English at home.**

**29.4%** of Asian American adults in IL are **Limited English Proficient** (speak English less than “Very well”)

**Chinese Tagalog Urdu Gujarati Hindi**  
(104,106) (83,892) (53,817) (49,512) (45,534)

**Hawaiian Samoan Chamorro**  
(308) (180) (165)

### TOP 5 ASIAN LANGUAGES SPOKEN IN IL

### TOP NHPI LANGUAGES WITH 100+ ESTIMATED SPEAKERS IN IL

## SOCIOECONOMIC CHALLENGES IN ILLINOIS



About 9.8% Asian Americans and 14.1% NHPIs in Illinois live in poverty.



About 6.4% Asian Americans and 12.6% NHPIs in Illinois lack health insurance.



About 11.1% Asian Americans and 16.9% NHPIs in Illinois lack broadband access.



## SECTION 203

Section 203 protects voting rights of language minorities by providing “registration or voting notices, forms, instructions, assistance, or other materials or information relating to the electoral process, including ballots” in the language appropriate to the covered minority group.

Coverage determinations for each state, county or county subdivision (depending on which is the operating level of government) is made every 5 years using data from the Census Bureau’s American Community Survey.

### **COVERAGE AREAS:**

**Political Subdivision:** Cook County

**Language Minority Group:** Asian Indian (including Sikh), Chinese (including Taiwanese)

# 2024 AAPI Voter Demographics | INDIANA

**111,690**

ELIGIBLE AAPI VOTERS\*

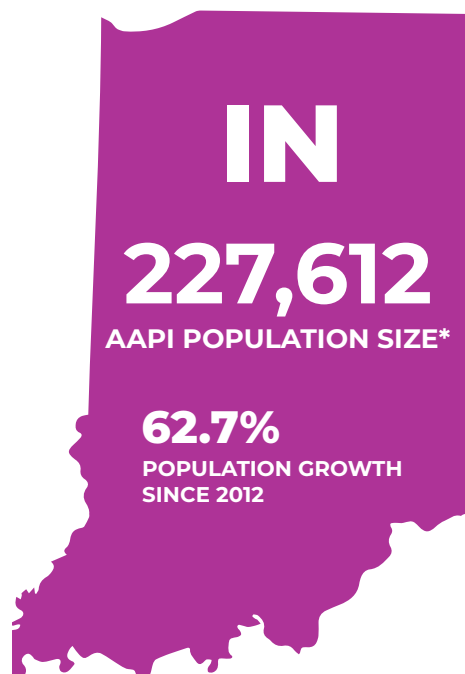
**57.6%**

AAPI VOTER ELIGIBILITY  
GROWTH (2012-2022)

**2.21%**

AAPI SHARE OF  
ELECTORATE IN INDIANA

\* Includes multi-racial population



**67,114**

FOREIGN BORN  
NONCITIZENS

**58,316**

FOREIGN BORN  
CITIZENS

**92,404**

NATIVE BORN  
CITIZENS

## COUNTIES WITH HIGHEST AAPI POPULATIONS

	AAPI Share of County Pop	Size of AAPI Population	AAPI Eligible Voter Share of County	Number of AAPI Eligible Voters
Marion County	4%	38,403	5.7%	14,938
Hamilton County	6.5%	22,705	9.3%	10,573
Allen County	4.8%	18,362	6.7%	7,409
Tippecanoe County	7.8%	14,594	10.8%	5,573
Monroe County	6.6%	9,238	8.3%	3,490

## LARGEST ASIAN AMERICAN ETHNIC GROUPS IN INDIANA

<b>Asian Indian</b> (52,332)	<b>Chinese, except Taiwanese</b> (38,234)	<b>Burmese</b> (27,674)	<b>Filipino</b> (26,879)	<b>Korean</b> (15,739)	<b>Japanese</b> (12,843)
---------------------------------	--	----------------------------	-----------------------------	---------------------------	-----------------------------

## LARGEST NHPI ETHNIC GROUPS IN INDIANA

<b>Native Hawaiian</b> (2,317)	<b>Samoan</b> (1,020)	<b>Chamorro</b> (819)
-----------------------------------	--------------------------	--------------------------

# 2024 AAPI Voter Demographics | INDIANA

## AAPI CITIZEN VOTING AGE POPULATION (CVAP)

**30.5%**

Voters aged 50+

**33.3%**

Voters aged 18-29

## VOTER ENGAGEMENT *(National Level Data)*

- Voter contact falls short for AAPIs. In the 2022 Asian American Voter Survey (AAVS), 56% of Asian Americans had no or uncertain contact from the Democrats. 66% reported the same from the Republicans.
- Of contacted Asian American registered voters, 44% reported outreach from Democrats, 35% from Republicans, 39% from community groups. Comparatively, in 2016, 48% reported Democratic outreach, 16% from the Republicans.
- 37% of registered Asian Americans did not identify with either party, signaling need and opportunity for voter education via outreach.

## IMPORTANCE OF LANGUAGE ACCESS

Per the 2022 AAVS, of Asian Americans speaking non-English languages at home, 11% reported language barriers to voting and 42% stated voting assistance in their language would be utilized. *(National level data).*

**59.9%** of Asian American adults in IN **speak a language other than English at home.**

**34%** of Asian American adults in IN are **Limited English Proficient** (speak English less than “Very well”)

**Chinese** (22,817) **Burmese** (12,586) **Tagalog** (10,087) **Punjabi** (9,523) **Hindi** (8,783)

### TOP 5 ASIAN LANGUAGES SPOKEN IN INDIANA

**Hawaiian** (117) **Marshallese** (108)

### TOP NHPI LANGUAGES WITH 100+ ESTIMATED SPEAKERS IN INDIANA

## SOCIOECONOMIC CHALLENGES IN INDIANA



About 13.2% Asian Americans and 17.3% NHPIs in Indiana live in poverty.



About 7.8% Asian Americans and 8.7% NHPIs in Indiana lack health insurance.



About 15.1% Asian Americans and 30.3% NHPIs in Indiana lack broadband access.

# 2024 AAPI Voter Demographics | IOWA

**51,381**

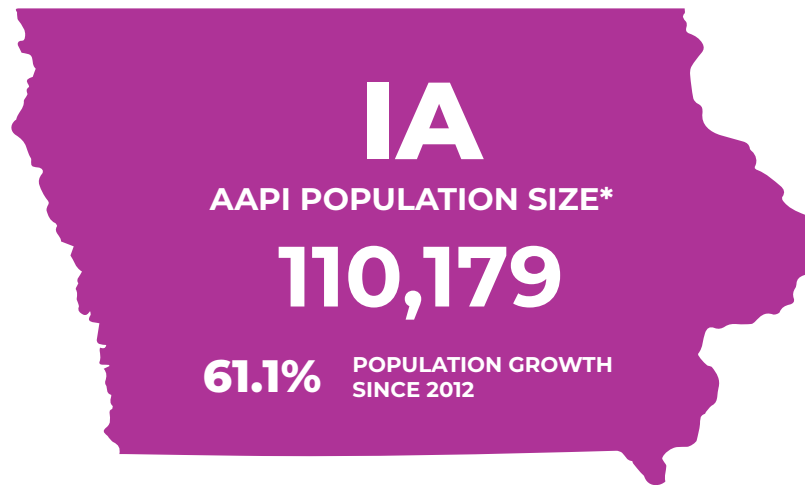
ELIGIBLE AAPI VOTERS\*

**45.6%**

AAPI VOTER ELIGIBILITY  
GROWTH (2012-2022)

**2.15%**

AAPI SHARE OF  
ELECTORATE IN IOWA



**30,545**

FOREIGN BORN  
NONCITIZENS

**29,304**

FOREIGN BORN  
CITIZENS

**47,984**

NATIVE BORN  
CITIZENS

\* Includes multi-racial population

## COUNTIES WITH HIGHEST AAPI POPULATIONS

	AAPI Share of County Pop	Size of AAPI Population	AAPI Eligible Voter Share of County	Number of AAPI Eligible Voters
Polk County	4.9%	24,375	7%	11,271
Johnson County	6.2%	9,494	8.4%	4,176
Story County	7.3%	7,224	9.4%	2,752
Linn County	2.3%	5,356	3.1%	2,580

## LARGEST ASIAN AMERICAN ETHNIC GROUPS IN IOWA

Asian Indian (17,300)	Chinese, except Taiwanese (15,279)	Vietnamese (11,650)	Filipino (11,236)	Korean (10,712)	Laotian (7,331)
--------------------------	--	------------------------	----------------------	--------------------	--------------------

## LARGEST NHPI ETHNIC GROUPS IN IOWA

Other Micronesia (2,263)	Native Hawaiian (1,650)	Marshallese (1,139)
--------------------------------	----------------------------	------------------------

# 2024 AAPI Voter Demographics | IOWA

## AAPI CITIZEN VOTING AGE POPULATION (CVAP)

**31%**

Voters aged 50+

**31.3%**

Voters aged 18-29

## VOTER ENGAGEMENT *(National Level Data)*

- Voter contact falls short for AAPIs. In the 2022 Asian American Voter Survey (AAVS), 56% of Asian Americans had no or uncertain contact from the Democrats. 66% reported the same from the Republicans.
- Of contacted Asian American registered voters, 44% reported outreach from Democrats, 35% from Republicans, 39% from community groups. Comparatively, in 2016, 48% reported Democratic outreach, 16% from the Republicans.
- 37% of registered Asian Americans did not identify with either party, signaling need and opportunity for voter education via outreach.

## IMPORTANCE OF LANGUAGE ACCESS

Per the 2022 AAVS, of Asian Americans speaking non-English languages at home, 11% reported language barriers to voting and 42% stated voting assistance in their language would be utilized. *(National level data).*

**56.4%** of Asian American adults in IA **speak a language other than English at home.**

**34.9%** of Asian American adults in IA are **Limited English Proficient** (speak English less than “Very well”)

**Vietnamese** (9,259) **Chinese** (7,991) **Karen languages** (4,118) **Korean** (3,480) **Lao** (3,164)

### TOP 5 ASIAN LANGUAGES SPOKEN IN IA

**Other Eastern Malayo-Polynesian languages** (1,801) **Marshallese** (502) **Samoan** (188)

### TOP NHPI LANGUAGES WITH 100+ ESTIMATED SPEAKERS IN IA

## SOCIOECONOMIC CHALLENGES IN IOWA



About 12.3% Asian Americans and 24.1% NHPIs in Iowa live in poverty.



About 6.6% Asian Americans and 17.3% NHPIs in Iowa lack health insurance.



About 13.7% Asian Americans and 16.2% NHPIs in Iowa lack broadband access.

# 2024 AAPI Voter Demographics | KANSAS

**60,179**

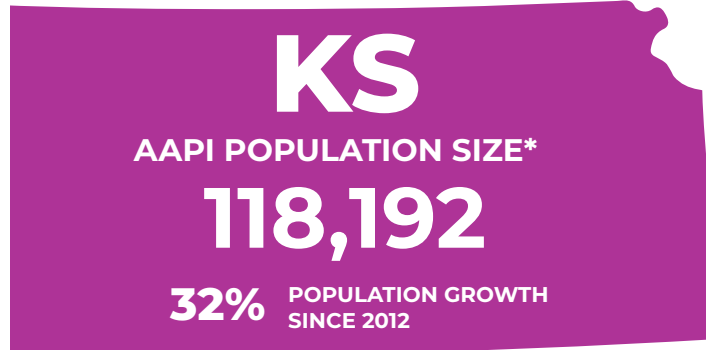
ELIGIBLE AAPI VOTERS\*

**22.5%**

AAPI VOTER ELIGIBILITY  
GROWTH (2012-2022)

**2.82%**

AAPI SHARE OF  
ELECTORATE IN KANSAS



**26,169**

FOREIGN BORN  
NONCITIZENS

**33,774**

FOREIGN BORN  
CITIZENS

**59,706**

NATIVE BORN  
CITIZENS

\* Includes multi-racial population

## COUNTIES WITH HIGHEST AAPI POPULATIONS

	AAPI Share of County Pop	Size of AAPI Population	AAPI Eligible Voter Share of County	Number of AAPI Eligible Voters
Johnson County	5.4%	32,901	7.4%	17,287
Sedgwick County	4.3%	22,488	6.1%	13,446
Wyandotte County	5.3%	8,923	8.6%	3,908
Douglas County	5%	5,896	6.3%	2,355

## LARGEST ASIAN AMERICAN ETHNIC GROUPS IN KANSAS

Asian Indian (21,370)	Vietnamese (20,120)	Chinese, except Taiwanese (17,845)	Filipino (14,319)	Korean (8,176)	Japanese (6,654)
--------------------------	------------------------	--	----------------------	-------------------	---------------------

## LARGEST NHPI ETHNIC GROUPS IN KANSAS

Native Hawaiian (1,490)	Other Micronesia (1,230)	Chamorro (1,007)
----------------------------	--------------------------------	---------------------

# 2024 AAPI Voter Demographics | KANSAS

## AAPI CITIZEN VOTING AGE POPULATION (CVAP)

**30.6%**

Voters aged 50+

**31.8%**

Voters aged 18-29

## VOTER ENGAGEMENT *(National Level Data)*

- Voter contact falls short for AAPIs. In the 2022 Asian American Voter Survey (AAVS), 56% of Asian Americans had no or uncertain contact from the Democrats. 66% reported the same from the Republicans.
- Of contacted Asian American registered voters, 44% reported outreach from Democrats, 35% from Republicans, 39% from community groups. Comparatively, in 2016, 48% reported Democratic outreach, 16% from the Republicans.
- 37% of registered Asian Americans did not identify with either party, signaling need and opportunity for voter education via outreach.

## IMPORTANCE OF LANGUAGE ACCESS

Per the 2022 AAVS, of Asian Americans speaking non-English languages at home, 11% reported language barriers to voting and 42% stated voting assistance in their language would be utilized. *(National level data).*

**54%** of Asian American adults in KS **speak a language other than English at home.**

**31%** of Asian American adults in KS are **Limited English Proficient** (speak English less than “Very well”)

**Vietnamese** (12,640) **Chinese** (10,816) **Hindi** (3,930) **Telugu** (3,645) **Tagalog** (3,594)

**Chuukese** (654) **Other Eastern Malayo-Polynesian languages** (238) **Chamorro** (201)

### TOP 5 ASIAN LANGUAGES SPOKEN IN KS

### TOP NHPI LANGUAGES WITH 100+ ESTIMATED SPEAKERS IN KS

## SOCIOECONOMIC CHALLENGES IN KANSAS



About 11.8% Asian Americans and 19.4% NHPIs in Kansas live in poverty.



About 7.4% Asian Americans and 16.3% NHPIs in Kansas lack health insurance.



About 13% Asian Americans and 31.2% NHPIs in Kansas lack broadband access.

# 2024 AAPI Voter Demographics | KENTUCKY

**48,184**

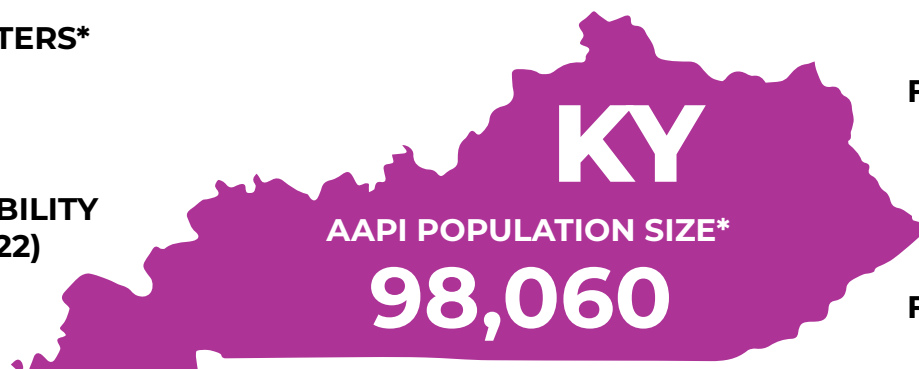
ELIGIBLE AAPI VOTERS\*

**21.8%**

AAPI VOTER ELIGIBILITY  
GROWTH (2012-2022)

**1.41%**

AAPI SHARE OF  
ELECTORATE IN KENTUCKY



**37.3%** POPULATION GROWTH  
SINCE 2012

**27,075**

FOREIGN BORN  
NONCITIZENS

**27,335**

FOREIGN BORN  
CITIZENS

**43,573**

NATIVE BORN  
CITIZENS

\* Includes multi-racial population

## COUNTIES WITH HIGHEST AAPI POPULATIONS

	AAPI Share of County Pop	Size of AAPI Population	AAPI Eligible Voter Share of County	Number of AAPI Eligible Voters
Jefferson County	3%	23,397	4.1%	10,306
Fayette County	4.1%	13,297	5.6%	5,642
Warren County	5.1%	6,901	7.1%	1,930

## LARGEST ASIAN AMERICAN ETHNIC GROUPS IN KENTUCKY

Asian Indian (19,846)	Filipino (14,145)	Chinese, except Taiwanese (13,904)	Korean (8,737)	Japanese (7,068)	Vietnamese (6,823)
--------------------------	----------------------	--	-------------------	---------------------	-----------------------

## LARGEST NHPI ETHNIC GROUPS IN KENTUCKY

Native Hawaiian (1,910)	Other Micronesia (1,361)	Chamorro (887)
----------------------------	--------------------------------	-------------------



# 2024 AAPI Voter Demographics | KENTUCKY

## AAPI CITIZEN VOTING AGE POPULATION (CVAP)

**31.2%**

Voters aged 50+

**29.6%**

Voters aged 18-29

## VOTER ENGAGEMENT *(National Level Data)*

- Voter contact falls short for AAPIs. In the 2022 Asian American Voter Survey (AAVS), 56% of Asian Americans had no or uncertain contact from the Democrats. 66% reported the same from the Republicans.
- Of contacted Asian American registered voters, 44% reported outreach from Democrats, 35% from Republicans, 39% from community groups. Comparatively, in 2016, 48% reported Democratic outreach, 16% from the Republicans.
- 37% of registered Asian Americans did not identify with either party, signaling need and opportunity for voter education via outreach.

## IMPORTANCE OF LANGUAGE ACCESS

Per the 2022 AAVS, of Asian Americans speaking non-English languages at home, 11% reported language barriers to voting and 42% stated voting assistance in their language would be utilized. *(National level data).*

**56.8%** of Asian American adults in KY **speak a language other than English at home.**

**33.4%** of Asian American adults in KY are **Limited English Proficient** (speak English less than “Very well”)

**Chinese** (8,208) **Vietnamese** (4,884) **Nepali** (4,299) **Tagalog** (3,761) **Hindi** (3,221)

**Other Eastern Malayo-Polynesian languages** (550) **Samoan** (157)

### TOP 5 ASIAN LANGUAGES SPOKEN IN KY

### TOP NHPI LANGUAGES WITH 100+ ESTIMATED SPEAKERS IN KY

## SOCIOECONOMIC CHALLENGES IN KENTUCKY



About 12.7% Asian Americans and 19.3% NHPIs in Kentucky live in poverty.



About 6.3% Asian Americans and 8.1% NHPIs in Kentucky lack health insurance.



About 14.5% Asian Americans and 32% NHPIs in Kentucky lack broadband access.

# 2024 AAPI Voter Demographics | LOUISIANA

**66,222**

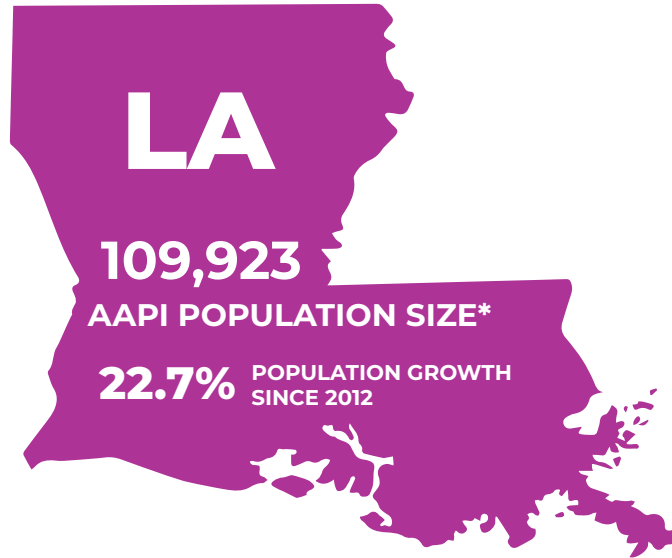
ELIGIBLE AAPI VOTERS\*

**19%**

AAPI VOTER ELIGIBILITY  
GROWTH (2012-2022)

**1.92%**

AAPI SHARE OF  
ELECTORATE IN LOUISIANA



**21,769**

FOREIGN BORN  
NONCITIZENS

**31,499**

FOREIGN BORN  
CITIZENS

**55,744**

NATIVE BORN  
CITIZENS

\* Includes multi-racial population

## COUNTIES WITH HIGHEST AAPI POPULATIONS

	AAPI Share of County Pop	Size of AAPI Population	AAPI Eligible Voter Share of County	Number of AAPI Eligible Voters
Jefferson Parish	4.2%	18,214	5.8%	10,906
East Baton Rouge Parish	3.1%	14,103	4.2%	7,095
Orleans Parish	2.8%	10,695	3.6%	7,214

## LARGEST ASIAN AMERICAN ETHNIC GROUPS IN LOUISIANA

<b>Vietnamese</b> (31,735)	<b>Filipino</b> (17,245)	<b>Chinese, except Taiwanese</b> (17,049)	<b>Asian Indian</b> (14,105)	<b>Japanese</b> (5,198)	<b>Korean</b> (4,919)
-------------------------------	-----------------------------	--	---------------------------------	----------------------------	--------------------------

## LARGEST NHPI ETHNIC GROUPS IN LOUISIANA

<b>Native Hawaiian</b> (1,904)	<b>Samoan</b> (963)	<b>Chamorro</b> (879)
-----------------------------------	------------------------	--------------------------

# 2024 AAPI Voter Demographics | LOUISIANA

## AAPI CITIZEN VOTING AGE POPULATION (CVAP)

**36.7%**

Voters aged 50+

**27.1%**

Voters aged 18-29

## VOTER ENGAGEMENT *(National Level Data)*

- Voter contact falls short for AAPIs. In the 2022 Asian American Voter Survey (AAVS), 56% of Asian Americans had no or uncertain contact from the Democrats. 66% reported the same from the Republicans.
- Of contacted Asian American registered voters, 44% reported outreach from Democrats, 35% from Republicans, 39% from community groups. Comparatively, in 2016, 48% reported Democratic outreach, 16% from the Republicans.
- 37% of registered Asian Americans did not identify with either party, signaling need and opportunity for voter education via outreach.

## IMPORTANCE OF LANGUAGE ACCESS

Per the 2022 AAVS, of Asian Americans speaking non-English languages at home, 11% reported language barriers to voting and 42% stated voting assistance in their language would be utilized. *(National level data).*

**57.5%** of Asian American adults in LA **speak a language other than English at home.**

**31%** of Asian American adults in LA are **Limited English Proficient** (speak English less than “Very well”)

Vietnamese	Chinese	Tagalog	Hindi	Urdu
(22,634)	(9,081)	(5,326)	(2,803)	(2,421)

## TOP 5 ASIAN LANGUAGES SPOKEN IN LA

## SOCIOECONOMIC CHALLENGES IN LOUISIANA



About 14% Asian Americans and 18% NHPs in Louisiana live in poverty.



About 10.4% Asian Americans and 4% NHPs in Louisiana lack health insurance.



About 15.2% Asian Americans and 29.8% NHPs in Louisiana lack broadband access.

# 2024 AAPI Voter Demographics | MAINE

**15,193**

ELIGIBLE AAPI VOTERS\*

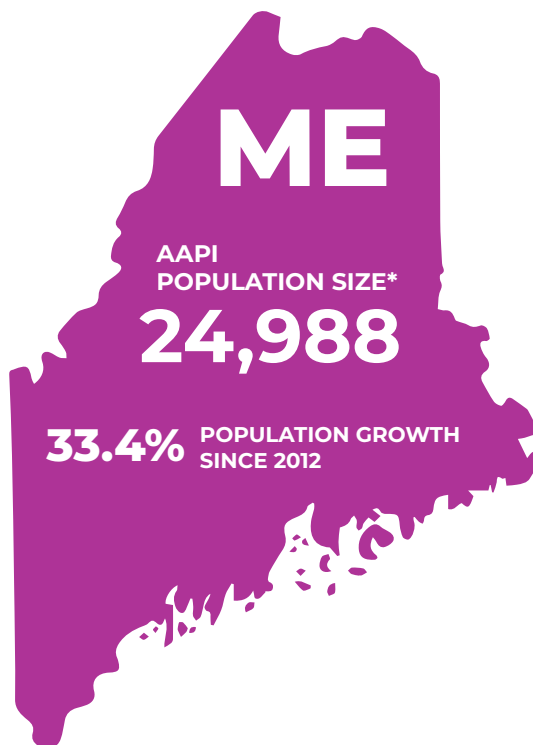
**59.9%**

AAPI VOTER ELIGIBILITY  
GROWTH (2012-2022)

**1.36%**

AAPI SHARE OF  
ELECTORATE IN MAINE

*\* Includes multi-racial population*



**4,695**

FOREIGN BORN  
NONCITIZENS

**6,753**

FOREIGN BORN  
CITIZENS

**14,207**

NATIVE BORN  
CITIZENS

## COUNTIES WITH HIGHEST AAPI POPULATIONS

	AAPI Share of County Pop	Size of AAPI Population	AAPI Eligible Voter Share of County	Number of AAPI Eligible Voters
Cumberland County	2.2%	6,655	2.8%	4,213

## LARGEST ASIAN AMERICAN ETHNIC GROUPS IN MAINE

Chinese, except Taiwanese (5,594)	Filipino (4,710)	Korean (2,791)	Vietnamese (2,500)	Asian Indian (2,297)	Japanese (2,165)
---	---------------------	-------------------	-----------------------	-------------------------	---------------------

## LARGEST NHPI ETHNIC GROUPS IN MAINE

Native Hawaiian (545)	Chamorro (326)	Samoan (163)
--------------------------	-------------------	-----------------

# 2024 AAPI Voter Demographics | MAINE

## AAPI CITIZEN VOTING AGE POPULATION (CVAP)

**31.6%**

Voters aged 50+

**29.8%**

Voters aged 18-29

## VOTER ENGAGEMENT *(National Level Data)*

- Voter contact falls short for AAPIs. In the 2022 Asian American Voter Survey (AAVS), 56% of Asian Americans had no or uncertain contact from the Democrats. 66% reported the same from the Republicans.
- Of contacted Asian American registered voters, 44% reported outreach from Democrats, 35% from Republicans, 39% from community groups. Comparatively, in 2016, 48% reported Democratic outreach, 16% from the Republicans.
- 37% of registered Asian Americans did not identify with either party, signaling need and opportunity for voter education via outreach.

## IMPORTANCE OF LANGUAGE ACCESS

Per the 2022 AAVS, of Asian Americans speaking non-English languages at home, 11% reported language barriers to voting and 42% stated voting assistance in their language would be utilized. *(National level data).*

**42.1%** of Asian American adults in ME **speak a language other than English at home.**

**23.2%** of Asian American adults in ME are **Limited English Proficient** (speak English less than “Very well”)

<b>Chinese</b>	<b>Vietnamese</b>	<b>Khmer</b>	<b>Tagalog</b>	<b>Farsi</b>
(2,559)	(1,238)	(1,152)	(1,134)	(800)

## TOP 5 ASIAN LANGUAGES SPOKEN IN ME

## SOCIOECONOMIC CHALLENGES IN MAINE



About 12.6% Asian Americans and 9.8% NHPs in Maine live in poverty.



About 7.9% Asian Americans and 14.6% NHPs in Maine lack health insurance.



About 12.9% Asian Americans and 13.8% NHPs in Maine lack broadband access.

# 2024 AAPI Voter Demographics | MARYLAND

**288,169**

ELIGIBLE AAPI VOTERS\*

**14.1%**

AAPI VOTER ELIGIBILITY  
GROWTH (2012-2022)

**6.53%**

AAPI SHARE OF  
ELECTORATE IN MARYLAND



**509,698**

**25.4%** POPULATION GROWTH  
SINCE 2012

**103,020**

FOREIGN BORN  
NONCITIZENS

**179,848**

FOREIGN BORN  
CITIZENS

**211,227**

NATIVE BORN  
CITIZENS

\* Includes multi-racial population

## COUNTIES WITH HIGHEST AAPI POPULATIONS

	AAPI Share of County Pop	Size of AAPI Population	AAPI Eligible Voter Share of County	Number of AAPI Eligible Voters
Montgomery County	15.3%	162,101	23.7%	97,481
Howard County	18.9%	62,762	27.4%	34,651
Baltimore County	6.1%	52,080	8.3%	27,853
Prince George's County	4.1%	39,515	6.2%	23,391
Anne Arundel County	4.1%	23,971	5.5%	14,935

## LARGEST ASIAN AMERICAN ETHNIC GROUPS IN MARYLAND

Asian Indian (116,689)	Chinese, except Taiwanese (100,054)	Filipino (72,780)	Korean (59,026)	Vietnamese (33,588)	Pakistani (25,222)
---------------------------	---	----------------------	--------------------	------------------------	-----------------------

## LARGEST NHPI ETHNIC GROUPS IN MARYLAND

Native Hawaiian (4,486)	Chamorro (1,593)	Samoan (1,016)
----------------------------	---------------------	-------------------

# 2024 AAPI Voter Demographics | MARYLAND

## AAPI CITIZEN VOTING AGE POPULATION (CVAP)

**42.5%**

Voters aged 50+

**20.6%**

Voters aged 18-29

## VOTER ENGAGEMENT *(National Level Data)*

- Voter contact falls short for AAPIs. In the 2022 Asian American Voter Survey (AAVS), 56% of Asian Americans had no or uncertain contact from the Democrats. 66% reported the same from the Republicans.
- Of contacted Asian American registered voters, 44% reported outreach from Democrats, 35% from Republicans, 39% from community groups. Comparatively, in 2016, 48% reported Democratic outreach, 16% from the Republicans.
- 37% of registered Asian Americans did not identify with either party, signaling need and opportunity for voter education via outreach.

## IMPORTANCE OF LANGUAGE ACCESS

Per the 2022 AAVS, of Asian Americans speaking non-English languages at home, 11% reported language barriers to voting and 42% stated voting assistance in their language would be utilized. *(National level data).*

**62.8%** of Asian American adults in MD **speak a language other than English at home.**

**30.2%** of Asian American adults in MD are **Limited English Proficient** (speak English less than “Very well”)

Chinese	Korean	Tagalog	Urdu	Vietnamese
(71,869)	(35,243)	(33,672)	(21,398)	(18,691)

## TOP 5 ASIAN LANGUAGES SPOKEN IN MARYLAND

## SOCIOECONOMIC CHALLENGES IN MARYLAND



About 7.7% Asian Americans and 14.1% NHPs in Maryland live in poverty.

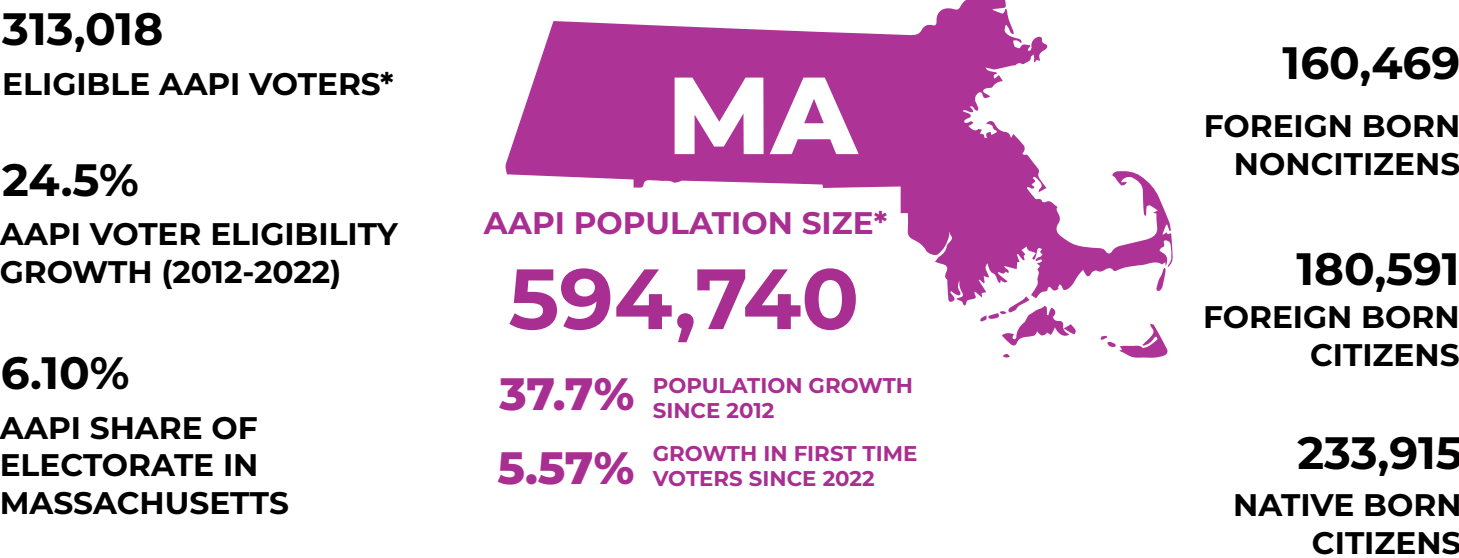


About 5% Asian Americans and 13.7% NHPs in Maryland lack health insurance.



About 9.1% Asian Americans and 17.3% NHPs in Maryland lack broadband access.

# 2024 AAPI Voter Demographics | MASSACHUSETTS



\* Includes multi-racial population

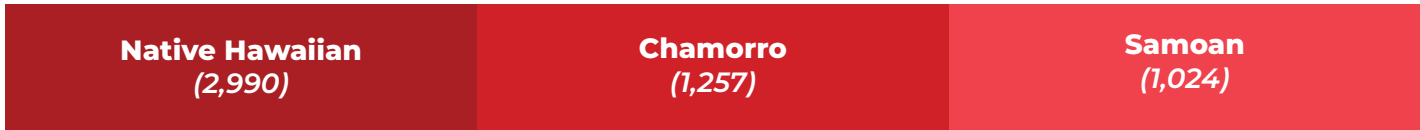
## COUNTIES WITH HIGHEST AAPI POPULATIONS

	AAPI Share of County Pop	Size of AAPI Population	AAPI Eligible Voter Share of County	Number of AAPI Eligible Voters
Middlesex County	13%	211,385	18.4%	104,209
Norfolk County	12%	86,298	16.5%	44,363
Suffolk County	8.9%	69,899	12.7%	39,348
Worcester County	5.1%	44,126	7%	21,501
Essex County	3.5%	28,372	4.9%	16,773

## LARGEST ASIAN AMERICAN ETHNIC GROUPS IN MASSACHUSETTS



## LARGEST NHPI ETHNIC GROUPS IN MASSACHUSETTS





# 2024 AAPI Voter Demographics | MASSACHUSETTS

## AAPI CITIZEN VOTING AGE POPULATION (CVAP)

**35.7%**

Voters aged 50+

**26.5%**

Voters aged 18-29

## VOTER ENGAGEMENT *(National Level Data)*

- Voter contact falls short for AAPIs. In the 2022 Asian American Voter Survey (AAVS), 56% of Asian Americans had no or uncertain contact from the Democrats. 66% reported the same from the Republicans.
- Of contacted Asian American registered voters, 44% reported outreach from Democrats, 35% from Republicans, 39% from community groups. Comparatively, in 2016, 48% reported Democratic outreach, 16% from the Republicans.
- 37% of registered Asian Americans did not identify with either party, signaling need and opportunity for voter education via outreach.

## IMPORTANCE OF LANGUAGE ACCESS

Per the 2022 AAVS, of Asian Americans speaking non-English languages at home, 11% reported language barriers to voting and 42% stated voting assistance in their language would be utilized. *(National level data).*

**65.9%** of Asian American adults in MA **speak a language other than English at home.**

**34%** of Asian American adults in MA are **Limited English Proficient** (speak English less than "Very well")

**Chinese** (140,818) **Vietnamese** (44,204) **Hindi** (30,045) **Khmer** (22,942) **Korean** (16,781)

### TOP 5 ASIAN LANGUAGES SPOKEN IN MA

**Chamorro** (148) **Samoan** (107)

### TOP NHPI LANGUAGES WITH 100+ ESTIMATED SPEAKERS IN MA

## SOCIOECONOMIC CHALLENGES IN MASSACHUSETTS



About 10.2% Asian Americans and 16% NHPIs in Massachusetts live in poverty.



About 2.5% Asian Americans and 8.4% NHPIs in Massachusetts lack health insurance.



About 8.9% Asian Americans and 24.1% NHPIs in Massachusetts lack broadband access.

## SECTION 203

Section 203 protects voting rights of language minorities by providing “registration or voting notices, forms, instructions, assistance, or other materials or information relating to the electoral process, including ballots” in the language appropriate to the covered minority group.

Coverage determinations for each state, county or county subdivision (depending on which is the operating level of government) is made every 5 years using data from the Census Bureau’s American Community Survey.

### **COVERAGE AREAS:**

**Political Subdivision:** Lowell City  
**Language Minority Group:** Cambodian

**Political Subdivision:** Malden City  
**Language Minority Group:** Chinese (including Taiwanese)

**Political Subdivision:** Quincy City  
**Language Minority Group:** Chinese (including Taiwanese)

**Political Subdivision:** Randolph Town City  
**Language Minority Group:** Vietnamese

# 2024 AAPI Voter Demographics | MICHIGAN

**221,045**

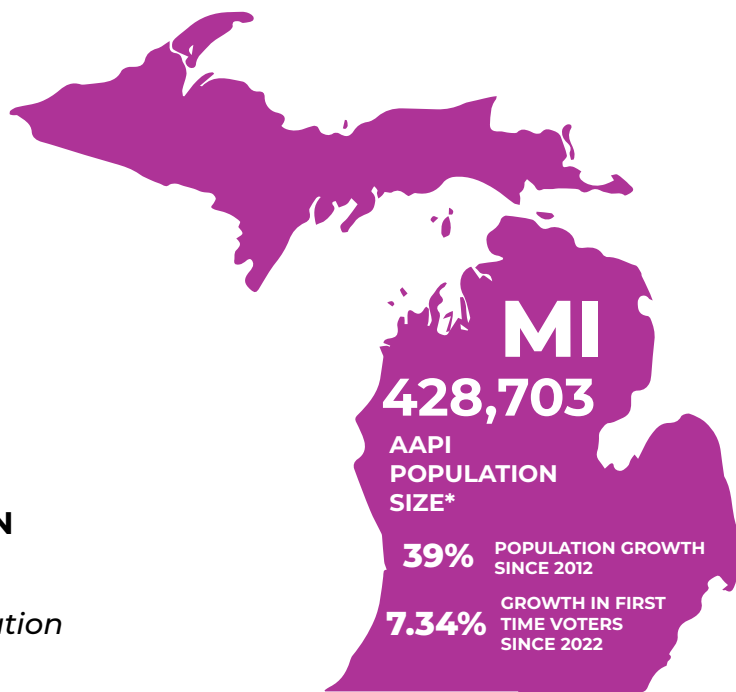
ELIGIBLE AAPI VOTERS\*

**35.2%**

AAPI VOTER ELIGIBILITY  
GROWTH (2012-2022)

**2.89%**

AAPI SHARE OF  
ELECTORATE IN MICHIGAN



**111,779**

FOREIGN BORN  
NONCITIZENS

**127,056**

FOREIGN BORN  
CITIZENS

**178,543**

NATIVE BORN  
CITIZENS

\* Includes multi-racial population

## COUNTIES WITH HIGHEST AAPI POPULATIONS

	AAPI Share of County Pop	Size of AAPI Population	AAPI Eligible Voter Share of County	Number of AAPI Eligible Voters
Oakland County	8.1%	103,199	10.9%	45,765
Wayne County	3.5%	61,835	4.8%	32,352
Macomb County	4.6%	40,165	6%	22,750
Washtenaw County	9.2%	34,038	12.1%	17,104
Kent County	3.2%	20,789	4.4%	10,262

## LARGEST ASIAN AMERICAN ETHNIC GROUPS IN MICHIGAN

Asian Indian (129,025)	Chinese, except Taiwanese (68,398)	Filipino (44,148)	Korean (39,176)	Vietnamese (24,230)	Japanese (24,186)
---------------------------	--	----------------------	--------------------	------------------------	----------------------

## LARGEST NHPI ETHNIC GROUPS IN MICHIGAN

Native Hawaiian (3,965)	Samoan (1,750)	Chamorro (1,469)
----------------------------	-------------------	---------------------

# 2024 AAPI Voter Demographics | MICHIGAN

## AAPI CITIZEN VOTING AGE POPULATION (CVAP)

**35.9%**

Voters aged 50+

**27.3%**

Voters aged 18-29

## VOTER ENGAGEMENT *(National Level Data)*

- Voter contact falls short for AAPIs. In the 2022 Asian American Voter Survey (AAVS), 56% of Asian Americans had no or uncertain contact from the Democrats. 66% reported the same from the Republicans.
- Of contacted Asian American registered voters, 44% reported outreach from Democrats, 35% from Republicans, 39% from community groups. Comparatively, in 2016, 48% reported Democratic outreach, 16% from the Republicans.
- 37% of registered Asian Americans did not identify with either party, signaling need and opportunity for voter education via outreach.

## IMPORTANCE OF LANGUAGE ACCESS

Per the 2022 AAVS, of Asian Americans speaking non-English languages at home, 11% reported language barriers to voting and 42% stated voting assistance in their language would be utilized. *(National level data).*

**61.9%** of Asian American adults in MI **speak a language other than English at home.**

**30.6%** of Asian American adults in MI are **Limited English Proficient** (speak English less than "Very well")

**Chinese** (45,761) **Bengali** (25,400) **Hindi** (19,522) **Korean** (16,205) **Telugu** (15,317)

### TOP 5 ASIAN LANGUAGES SPOKEN IN MI

**Samoan** (210) **Chamorro** (134)

### TOP NHPI LANGUAGES WITH 100+ ESTIMATED SPEAKERS IN MI

## SOCIOECONOMIC CHALLENGES IN MICHIGAN



About 10.4% Asian Americans and 20.1% NHPIs in Michigan live in poverty.



About 4.4% Asian Americans and 10.1% NHPIs in Michigan lack health insurance.



About 10.4% Asian Americans and 17.7% NHPIs in Michigan lack broadband access.

## SECTION 203

Section 203 protects voting rights of language minorities by providing “registration or voting notices, forms, instructions, assistance, or other materials or information relating to the electoral process, including ballots” in the language appropriate to the covered minority group.

Coverage determinations for each state, county or county subdivision (depending on which is the operating level of government) is made every 5 years using data from the Census Bureau’s American Community Survey.

### **COVERAGE AREAS:**

**Political Subdivision:** Hamtramck City

**Language Minority Group:** Bengali

# 2024 AAPI Voter Demographics | MINNESOTA

**214,381**

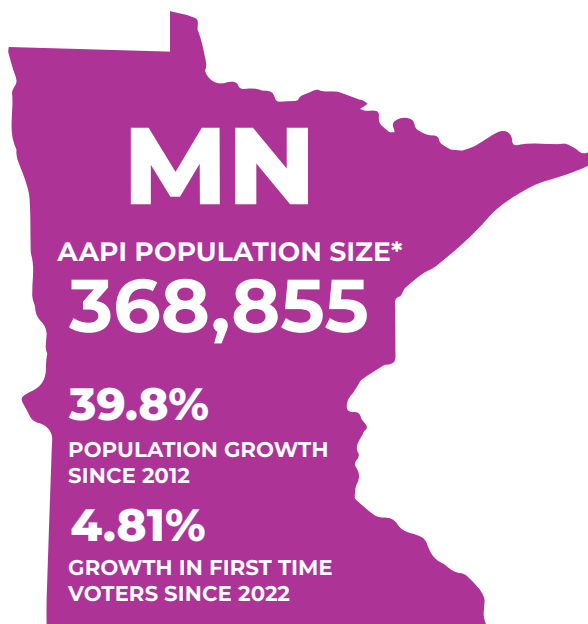
ELIGIBLE AAPI VOTERS\*

**36.7%**

AAPI VOTER ELIGIBILITY  
GROWTH (2012-2022)

**5.02%**

AAPI SHARE OF  
ELECTORATE IN MINNESOTA



**55,502**

FOREIGN BORN  
NONCITIZENS

**115,473**

FOREIGN BORN  
CITIZENS

**182,517**

NATIVE BORN  
CITIZENS

\* Includes multi-racial population

## COUNTIES WITH HIGHEST AAPI POPULATIONS

	AAPI Share of County Pop	Size of AAPI Population	AAPI Eligible Voter Share of County	Number of AAPI Eligible Voters
Hennepin County	7.2%	90,899	9.8%	49,759
Ramsey County	15%	82,122	21%	43,964
Dakota County	5.2%	22,793	7.2%	12,738
Anoka County	5.2%	19,037	7.1%	11,815
Washington County	7%	18,710	9.5%	11,010

## LARGEST ASIAN AMERICAN ETHNIC GROUPS IN MINNESOTA

<b>Hmong</b> (97,741)	<b>Asian Indian</b> (53,003)	<b>Chinese, except Taiwanese</b> (40,623)	<b>Vietnamese</b> (34,210)	<b>Korean</b> (25,104)	<b>Filipino</b> (25,050)
--------------------------	---------------------------------	--	-------------------------------	---------------------------	-----------------------------

## LARGEST NHPI ETHNIC GROUPS IN MINNESOTA

<b>Native Hawaiian</b> (2,662)	<b>Samoan</b> (1,152)	<b>Chamorro</b> (781)
-----------------------------------	--------------------------	--------------------------

# 2024 AAPI Voter Demographics | MINNESOTA

## AAPI CITIZEN VOTING AGE POPULATION (CVAP)

**27.2%**

Voters aged 50+

**31%**

Voters aged 18-29

## VOTER ENGAGEMENT *(National Level Data)*

- Voter contact falls short for AAPIs. In the 2022 Asian American Voter Survey (AAVS), 56% of Asian Americans had no or uncertain contact from the Democrats. 66% reported the same from the Republicans.
- Of contacted Asian American registered voters, 44% reported outreach from Democrats, 35% from Republicans, 39% from community groups. Comparatively, in 2016, 48% reported Democratic outreach, 16% from the Republicans.
- 37% of registered Asian Americans did not identify with either party, signaling need and opportunity for voter education via outreach.

## IMPORTANCE OF LANGUAGE ACCESS

Per the 2022 AAVS, of Asian Americans speaking non-English languages at home, 11% reported language barriers to voting and 42% stated voting assistance in their language would be utilized. *(National level data).*

**58.4%** of Asian American adults in MN **speak a language other than English at home.**

**34.7%** of Asian American adults in MN are **Limited English Proficient** (speak English less than “Very well”)

**Hmong** (68,324) **Chinese** (22,536) **Vietnamese** (21,850) **Karen languages** (12,855) **Hindi** (7,969)

### TOP 5 ASIAN LANGUAGES SPOKEN IN MN

**Other Eastern Malayo-Polynesian languages** (404) **Samoan** (155)

### TOP NHPI LANGUAGES WITH 100+ ESTIMATED SPEAKERS IN MN

## SOCIOECONOMIC CHALLENGES IN MINNESOTA



About 10.7% Asian Americans and 12.9% NHPIs in Minnesota live in poverty.



About 5.1% Asian Americans and 7.7% NHPIs in Minnesota lack health insurance.



About 13.1% Asian Americans and 13.7% NHPIs in Minnesota lack broadband access.

## SECTION 203

Section 203 protects voting rights of language minorities by providing “registration or voting notices, forms, instructions, assistance, or other materials or information relating to the electoral process, including ballots” in the language appropriate to the covered minority group.

Coverage determinations for each state, county or county subdivision (depending on which is the operating level of government) is made every 5 years using data from the Census Bureau’s American Community Survey.

### **COVERAGE AREAS:**

**Political Subdivision:** Ramsey County

**Language Minority Group:** Hmong



# 2024 AAPI Voter Demographics | MISSISSIPPI

**22,475**

ELIGIBLE AAPI VOTERS\*

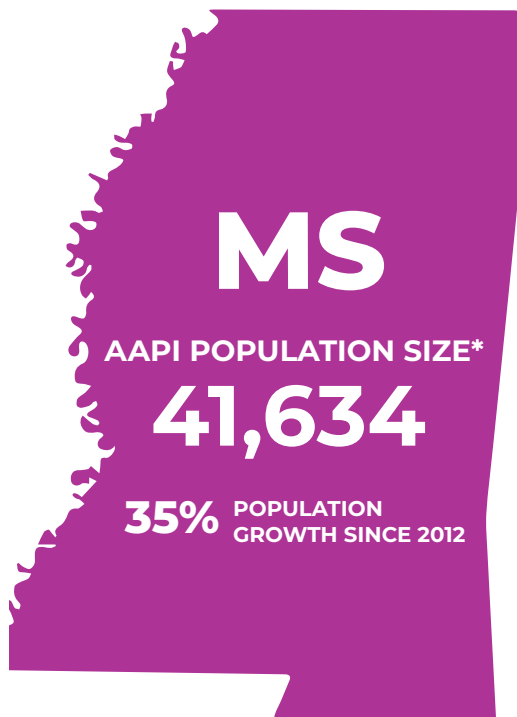
**27.1%**

AAPI VOTER ELIGIBILITY  
GROWTH (2012-2022)

**1.01%**

AAPI SHARE OF  
ELECTORATE IN MISSISSIPPI

*\* Includes multi-racial population*



**9,017**

FOREIGN BORN  
NONCITIZENS

**10,819**

FOREIGN BORN  
CITIZENS

**24,326**

NATIVE BORN  
CITIZENS

## COUNTIES WITH HIGHEST AAPI POPULATIONS

	AAPI Share of County Pop	Size of AAPI Population	AAPI Eligible Voter Share of County	Number of AAPI Eligible Voters
Harrison County	2.4%	5,046	3.2%	3,780

## LARGEST ASIAN AMERICAN ETHNIC GROUPS IN MISSISSIPPI

<b>Vietnamese</b> (9,185)	<b>Filipino</b> (8,431)	<b>Asian Indian</b> (7,644)	<b>Chinese, except Taiwanese</b> (6,290)	<b>Korean</b> (2,976)	<b>Japanese</b> (2,296)
------------------------------	----------------------------	--------------------------------	---	--------------------------	----------------------------

## LARGEST NHPI ETHNIC GROUPS IN MISSISSIPPI

<b>Native Hawaiian</b> (1,079)	<b>Samoan</b> (381)	<b>Chamorro</b> (352)
-----------------------------------	------------------------	--------------------------

# 2024 AAPI Voter Demographics | MISSISSIPPI

## AAPI CITIZEN VOTING AGE POPULATION (CVAP)

**36.1%**

Voters aged 50+

**26.6%**

Voters aged 18-29

## VOTER ENGAGEMENT *(National Level Data)*

- Voter contact falls short for AAPIs. In the 2022 Asian American Voter Survey (AAVS), 56% of Asian Americans had no or uncertain contact from the Democrats. 66% reported the same from the Republicans.
- Of contacted Asian American registered voters, 44% reported outreach from Democrats, 35% from Republicans, 39% from community groups. Comparatively, in 2016, 48% reported Democratic outreach, 16% from the Republicans.
- 37% of registered Asian Americans did not identify with either party, signaling need and opportunity for voter education via outreach.

## IMPORTANCE OF LANGUAGE ACCESS

Per the 2022 AAVS, of Asian Americans speaking non-English languages at home, 11% reported language barriers to voting and 42% stated voting assistance in their language would be utilized. *(National level data).*

**50.0%** of Asian American adults in MS **speak a language other than English at home.**

**25.9%** of Asian American adults in MS are **Limited English Proficient** (speak English less than “Very well”)

<b>Vietnamese</b>	<b>Chinese</b>	<b>Tagalog</b>	<b>Hindi</b>	<b>Korean</b>
<b>(5,508)</b>	<b>(3,144)</b>	<b>(2,360)</b>	<b>(1,326)</b>	<b>(1,045)</b>

## TOP 5 ASIAN LANGUAGES SPOKEN IN MS

## SOCIOECONOMIC CHALLENGES IN MISSISSIPPI



About 13.4% Asian Americans and 17.8% NHPs in Mississippi live in poverty.



About 14.3% Asian Americans and 15.7% NHPs in Mississippi lack health insurance.



About 18.8% Asian Americans and 40.5% NHPs in Mississippi lack broadband access.

# 2024 AAPI Voter Demographics | MISSOURI

**102,112**

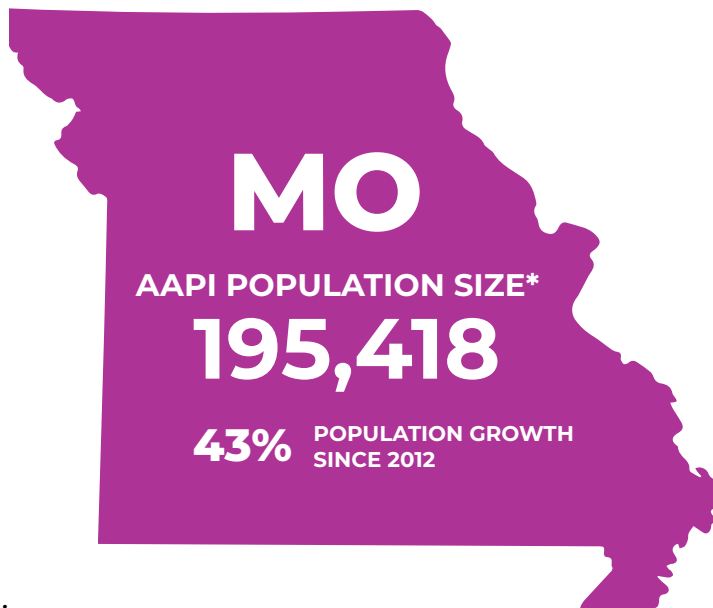
ELIGIBLE AAPI VOTERS\*

**38.5%**

AAPI VOTER ELIGIBILITY  
GROWTH (2012-2022)

**2.17%**

AAPI SHARE OF  
ELECTORATE IN MISSOURI



**43,163**

FOREIGN BORN  
NONCITIZENS

**49,218**

FOREIGN BORN  
CITIZENS

**91,461**

NATIVE BORN  
CITIZENS

\* Includes multi-racial population

## COUNTIES WITH HIGHEST AAPI POPULATIONS

	AAPI Share of County Pop	Size of AAPI Population	AAPI Eligible Voter Share of County	Number of AAPI Eligible Voters
St. Louis County	4.7%	47,110	6.3%	22,135
Jackson County	2%	14,109	2.7%	9,010
St. Charles County	2.8%	11,279	3.7%	5,805
City of St. Louis	3.6%	10,590	4.5%	5,900
Boone County	4.8%	8,798	6.3%	3,632

## LARGEST ASIAN AMERICAN ETHNIC GROUPS IN MISSOURI

Asian Indian (38,578)	Chinese, except Taiwanese (33,796)	Filipino (26,401)	Vietnamese (19,563)	Korean (16,768)	Japanese (10,659)
--------------------------	--	----------------------	------------------------	--------------------	----------------------

## LARGEST NHPI ETHNIC GROUPS IN MISSOURI

Native Hawaiian (4,375)	Samoan (4,269)	Other Micronesian (3,382)
----------------------------	-------------------	------------------------------

# 2024 AAPI Voter Demographics | MISSOURI

## AAPI CITIZEN VOTING AGE POPULATION (CVAP)

**35.2%**

Voters aged 50+

**29.3%**

Voters aged 18-29

## VOTER ENGAGEMENT *(National Level Data)*

- Voter contact falls short for AAPIs. In the 2022 Asian American Voter Survey (AAVS), 56% of Asian Americans had no or uncertain contact from the Democrats. 66% reported the same from the Republicans.
- Of contacted Asian American registered voters, 44% reported outreach from Democrats, 35% from Republicans, 39% from community groups. Comparatively, in 2016, 48% reported Democratic outreach, 16% from the Republicans.
- 37% of registered Asian Americans did not identify with either party, signaling need and opportunity for voter education via outreach.

## IMPORTANCE OF LANGUAGE ACCESS

Per the 2022 AAVS, of Asian Americans speaking non-English languages at home, 11% reported language barriers to voting and 42% stated voting assistance in their language would be utilized. *(National level data).*

**54.7%** of Asian American adults in MO **speak a language other than English at home.**

**26.6%** of Asian American adults in MO are **Limited English Proficient** (speak English less than “Very well”)

**Chinese** (22,804) **Vietnamese** (13,834) **Tagalog** (7,770) **Telugu** (7,021) **Korean** (6,638)

**Other Eastern Malayo-Polynesian languages** (1,319) **Samoan** (670) **Chuukese** (484)

### TOP 5 ASIAN LANGUAGES SPOKEN IN MO

### TOP NHPI LANGUAGES WITH 100+ ESTIMATED SPEAKERS IN MO

## SOCIOECONOMIC CHALLENGES IN MISSOURI



About 10.6% Asian Americans and 12.7% NHPIs in Missouri live in poverty.

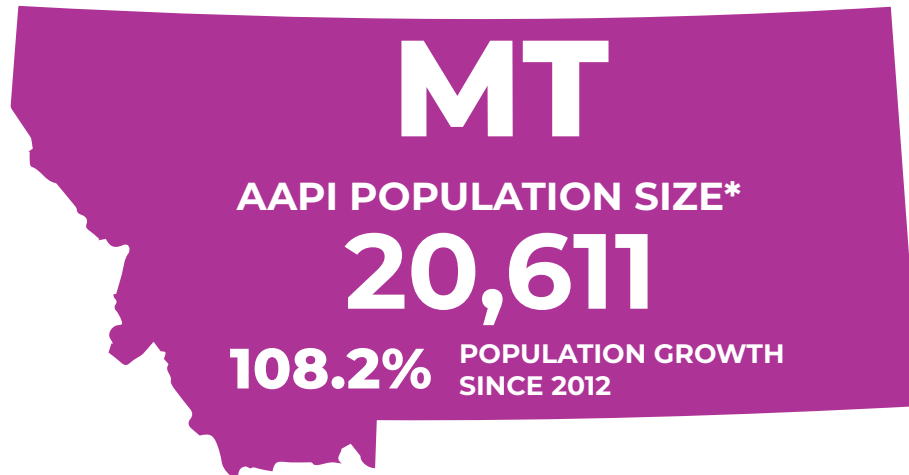


About 7.8% Asian Americans and 14.1% NHPIs in Missouri lack health insurance.



About 12.2% Asian Americans and 29.1% NHPIs in Missouri lack broadband access.

# 2024 AAPI Voter Demographics | MONTANA



**12,378**

ELIGIBLE AAPI VOTERS\*

**2,235**

FOREIGN BORN  
NONCITIZENS

**70.6%**

AAPI VOTER ELIGIBILITY  
GROWTH (2012-2022)

**3,471**

FOREIGN BORN  
CITIZENS

**1.41%**

AAPI SHARE OF  
ELECTORATE IN MONTANA

**13,813**

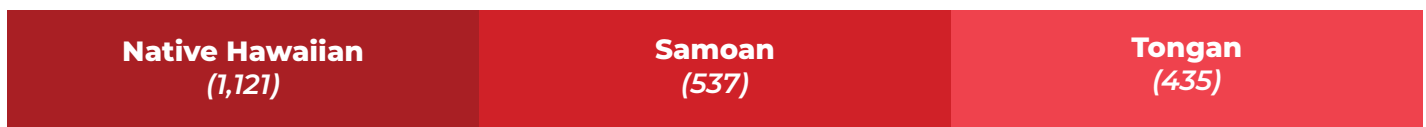
NATIVE BORN  
CITIZENS

*\* Includes multi-racial population*

## LARGEST ASIAN AMERICAN ETHNIC GROUPS IN MONTANA



## LARGEST NHPI ETHNIC GROUPS IN MONTANA



# 2024 AAPI Voter Demographics | MONTANA

## AAPI CITIZEN VOTING AGE POPULATION (CVAP)

**28.5%**

Voters aged 50+

**33.2%**

Voters aged 18-29

## VOTER ENGAGEMENT *(National Level Data)*

- Voter contact falls short for AAPIs. In the 2022 Asian American Voter Survey (AAVS), 56% of Asian Americans had no or uncertain contact from the Democrats. 66% reported the same from the Republicans.
- Of contacted Asian American registered voters, 44% reported outreach from Democrats, 35% from Republicans, 39% from community groups. Comparatively, in 2016, 48% reported Democratic outreach, 16% from the Republicans.
- 37% of registered Asian Americans did not identify with either party, signaling need and opportunity for voter education via outreach.

## IMPORTANCE OF LANGUAGE ACCESS

Per the 2022 AAVS, of Asian Americans speaking non-English languages at home, 11% reported language barriers to voting and 42% stated voting assistance in their language would be utilized. *(National level data).*

**28.3%** of Asian American adults in MT **speak a language other than English at home.**

**12.8%** of Asian American adults in MT are **Limited English Proficient** (speak English less than “Very well”)

<b>Chinese</b>	<b>Tagalog</b>	<b>Vietnamese</b>	<b>Hmong</b>	<b>Korean</b>
(1,475)	(830)	(824)	(464)	(231)

## TOP 5 ASIAN LANGUAGES SPOKEN IN MONTANA

## SOCIOECONOMIC CHALLENGES IN MONTANA



About 19.1% Asian Americans and 27.9% NHPs in Montana live in poverty.



About 7.2% Asian Americans and 1.9% NHPs in Montana lack health insurance.



About 21.4% Asian Americans and 12.5% NHPs in Montana lack broadband access.

# 2024 AAPI Voter Demographics | NEBRASKA

**31,989**

ELIGIBLE AAPI VOTERS\*

**30.4%**

AAPI VOTER ELIGIBILITY  
GROWTH (2012-2022)

**2.24%**

AAPI SHARE OF  
ELECTORATE IN NEBRASKA

**NE**

AAPI POPULATION SIZE\*

**70,172**

**51.2%**

POPULATION GROWTH  
SINCE 2012

**18,855**

FOREIGN BORN  
NONCITIZENS

**17,742**

FOREIGN BORN  
CITIZENS

**32,186**

NATIVE BORN  
CITIZENS

*\* Includes multi-racial population*

## COUNTIES WITH HIGHEST AAPI POPULATIONS

	AAPI Share of County Pop	Size of AAPI Population	AAPI Eligible Voter Share of County	Number of AAPI Eligible Voters
Douglas County	4.2%	24,491	6.1%	9,395
Lancaster County	4.2%	13,368	5.6%	6,732
Sarpy County	2.6%	5,068	3.7%	2,978

## LARGEST ASIAN AMERICAN ETHNIC GROUPS IN NEBRASKA

Filipino (9,508)	Vietnamese (9,210)	Asian Indian (8,809)	Chinese, except Taiwanese (7,917)	Burmese (7,019)	Korean (4,954)
---------------------	-----------------------	-------------------------	---	--------------------	-------------------

## LARGEST NHPI ETHNIC GROUPS IN NEBRASKA

Native Hawaiian (1,389)	Chamorro (1,208)	Samoan (408)
----------------------------	---------------------	-----------------

# 2024 AAPI Voter Demographics | NEBRASKA

## AAPI CITIZEN VOTING AGE POPULATION (CVAP)

**28.7%**

Voters aged 50+

**32.4%**

Voters aged 18-29

## VOTER ENGAGEMENT *(National Level Data)*

- Voter contact falls short for AAPIs. In the 2022 Asian American Voter Survey (AAVS), 56% of Asian Americans had no or uncertain contact from the Democrats. 66% reported the same from the Republicans.
- Of contacted Asian American registered voters, 44% reported outreach from Democrats, 35% from Republicans, 39% from community groups. Comparatively, in 2016, 48% reported Democratic outreach, 16% from the Republicans.
- 37% of registered Asian Americans did not identify with either party, signaling need and opportunity for voter education via outreach.

## IMPORTANCE OF LANGUAGE ACCESS

Per the 2022 AAVS, of Asian Americans speaking non-English languages at home, 11% reported language barriers to voting and 42% stated voting assistance in their language would be utilized. *(National level data).*

**53.6%** of Asian American adults in NE **speak a language other than English at home.**

**34.7%** of Asian American adults in NE are **Limited English Proficient** (speak English less than “Very well”)

**Vietnamese** (6,211) **Karen languages** (4,654) **Chinese** (3,603) **Nepali** (3,026) **Tagalog** (2,399)

### TOP 5 ASIAN LANGUAGES SPOKEN IN NE

**Chamorro (100)**

### TOP NHPI LANGUAGES WITH 100+ ESTIMATED SPEAKERS IN NE

## SOCIOECONOMIC CHALLENGES IN NEBRASKA



About 10.7% Asian Americans and 16.5% NHPIs in Nebraska live in poverty.



About 8.1% Asian Americans and 6.7% NHPIs in Nebraska lack health insurance.



About 13.5% Asian Americans and 6.4% NHPIs in Nebraska lack broadband access.



# 2024 AAPI Voter Demographics | NEVADA

**266,169**

ELIGIBLE AAPI VOTERS\*

**36.0%**

AAPI VOTER ELIGIBILITY  
GROWTH (2012-2022)

**11.97%**

AAPI SHARE OF  
ELECTORATE IN NEVADA

**NV**

AAPI POPULATION SIZE\*

**409,839**

**45.1%**

POPULATION  
GROWTH SINCE 2012

**8.02%**

GROWTH IN FIRST  
TIME VOTERS SINCE  
2022

**53,627**

FOREIGN BORN  
NONCITIZENS

**124,955**

FOREIGN BORN  
CITIZENS

**192,991**

NATIVE BORN  
CITIZENS

\* Includes multi-racial population

## COUNTIES WITH HIGHEST AAPI POPULATIONS

	AAPI Share of County Pop	Size of AAPI Population	AAPI Eligible Voter Share of County	Number of AAPI Eligible Voters
Clark County	10.7%	243,023	15.8%	167,881
Washoe County	5.8%	28,214	8.1%	17,637

## LARGEST ASIAN AMERICAN ETHNIC GROUPS IN NEVADA

<b>Filipino</b> (178,655)	<b>Chinese, except Taiwanese</b> (58,942)	<b>Japanese</b> (30,709)	<b>Korean</b> (21,149)	<b>Asian Indian</b> (19,828)	<b>Vietnamese</b> (19,819)
------------------------------	--	-----------------------------	---------------------------	---------------------------------	-------------------------------

## LARGEST NHPI ETHNIC GROUPS IN NEVADA

<b>Native Hawaiian</b> (23,860)	<b>Samoan</b> (8,524)	<b>Chamorro</b> (5,518)
------------------------------------	--------------------------	----------------------------

# 2024 AAPI Voter Demographics | NEVADA

## AAPI CITIZEN VOTING AGE POPULATION (CVAP)

**42.9%**

Voters aged 50+

**20.6%**

Voters aged 18-29

## VOTER ENGAGEMENT *(National Level Data)*

- Voter contact falls short for AAPIs. In the 2022 Asian American Voter Survey (AAVS), 56% of Asian Americans had no or uncertain contact from the Democrats. 66% reported the same from the Republicans.
- Of contacted Asian American registered voters, 44% reported outreach from Democrats, 35% from Republicans, 39% from community groups. Comparatively, in 2016, 48% reported Democratic outreach, 16% from the Republicans.
- 37% of registered Asian Americans did not identify with either party, signaling need and opportunity for voter education via outreach.

## IMPORTANCE OF LANGUAGE ACCESS

Per the 2022 AAVS, of Asian Americans speaking non-English languages at home, 11% reported language barriers to voting and 42% stated voting assistance in their language would be utilized. *(National level data).*

**53.3%** of Asian American adults in NV **speak a language other than English at home.**

**24.4%** of Asian American adults in NV are **Limited English Proficient** (speak English less than “Very well”)

**Tagalog** (84,532) **Chinese** (32,390) **Vietnamese** (11,287) **Korean** (10,106) **Japanese** (5,533)

### TOP 5 ASIAN LANGUAGES SPOKEN IN NV

**Samoan** (2,344) **Chamorro** (770) **Hawaiian** (493)

### TOP NHPI LANGUAGES WITH 100+ ESTIMATED SPEAKERS IN NV

## SOCIOECONOMIC CHALLENGES IN NEVADA



About 10.1% Asian Americans and 13.6% NHPIs in Nevada live in poverty.



About 8.8% Asian Americans and 10.7% NHPIs in Nevada lack health insurance.



About 13% Asian Americans and 14.8% NHPIs in Nevada lack broadband access.

## SECTION 203

Section 203 protects voting rights of language minorities by providing “registration or voting notices, forms, instructions, assistance, or other materials or information relating to the electoral process, including ballots” in the language appropriate to the covered minority group.

Coverage determinations for each state, county or county subdivision (depending on which is the operating level of government) is made every 5 years using data from the Census Bureau’s American Community Survey.

### **COVERAGE AREAS:**

**Political Subdivision:** Clark County

**Language Minority Group:** Filipino

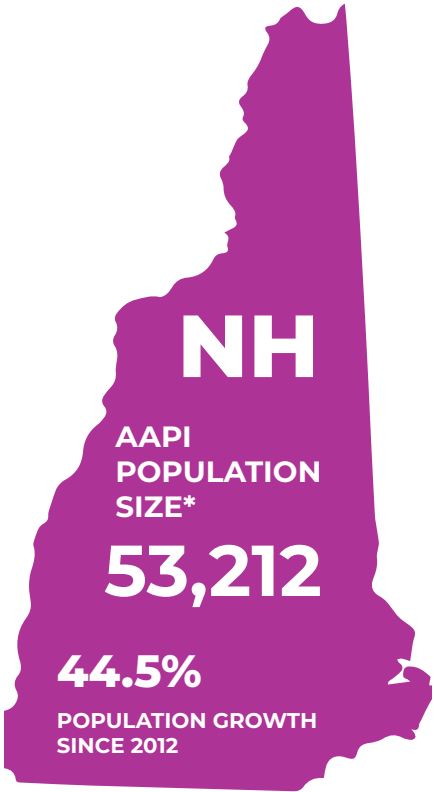
# 2024 AAPI Voter Demographics | NEW HAMPSHIRE

**30,988**  
ELIGIBLE AAPI VOTERS\*

**58.7%**  
AAPI VOTER ELIGIBILITY  
GROWTH (2012-2022)

**2.77%**  
AAPI SHARE OF  
ELECTORATE IN NEW  
HAMPSHIRE

*\* Includes multi-racial population*



**12,053**  
FOREIGN BORN  
NONCITIZENS

**14,817**  
FOREIGN BORN  
CITIZENS

**24,102**  
NATIVE BORN  
CITIZENS

## COUNTIES WITH HIGHEST AAPI POPULATIONS

	AAPI Share of County Pop	Size of AAPI Population	AAPI Eligible Voter Share of County	Number of AAPI Eligible Voters
Hillsborough County	4.2%	17,758	5.5%	8,952
Rockingham County	2.1%	6,533	2.6%	4,173

## LARGEST ASIAN AMERICAN ETHNIC GROUPS IN NEW HAMPSHIRE

<b>Asian Indian</b> (11,615)	<b>Chinese, except Taiwanese</b> (10,056)	<b>Filipino</b> (6,446)	<b>Korean</b> (4,368)	<b>Vietnamese</b> (4,197)	<b>Japanese</b> (3,386)
---------------------------------	--	----------------------------	--------------------------	------------------------------	----------------------------

## LARGEST NHPI ETHNIC GROUPS IN NEW HAMPSHIRE

<b>Native Hawaiian</b> (510)	<b>Chamorro</b> (275)	<b>Samoan</b> (104)
---------------------------------	--------------------------	------------------------

# 2024 AAPI Voter Demographics | NEW HAMPSHIRE

## AAPI CITIZEN VOTING AGE POPULATION (CVAP)

**31.5%**

Voters aged 50+

**28.2%**

Voters aged 18-29

## VOTER ENGAGEMENT *(National Level Data)*

- Voter contact falls short for AAPIs. In the 2022 Asian American Voter Survey (AAVS), 56% of Asian Americans had no or uncertain contact from the Democrats. 66% reported the same from the Republicans.
- Of contacted Asian American registered voters, 44% reported outreach from Democrats, 35% from Republicans, 39% from community groups. Comparatively, in 2016, 48% reported Democratic outreach, 16% from the Republicans.
- 37% of registered Asian Americans did not identify with either party, signaling need and opportunity for voter education via outreach.

## IMPORTANCE OF LANGUAGE ACCESS

Per the 2022 AAVS, of Asian Americans speaking non-English languages at home, 11% reported language barriers to voting and 42% stated voting assistance in their language would be utilized. *(National level data).*

**49.7%** of Asian American adults in NH **speak a language other than English at home.**

**21.8%** of Asian American adults in NH are **Limited English Proficient** (speak English less than “Very well”)

<b>Chinese</b>	<b>Nepali</b>	<b>Tagalog</b>	<b>Telugu</b>	<b>Vietnamese</b>
(5,449)	(3,057)	(1,839)	(1,821)	(1,677)

## TOP 5 ASIAN LANGUAGES SPOKEN IN NH

## SOCIOECONOMIC CHALLENGES IN NEW HAMPSHIRE



About 6.2% Asian Americans and 6.9% NHPIs in New Hampshire live in poverty.



About 8.3% Asian Americans and 11.2% NHPIs in New Hampshire lack health insurance.



About 5.8% Asian Americans in New Hampshire lack broadband access.

# 2024 AAPI Voter Demographics | NEW JERSEY

**584,236**

ELIGIBLE AAPI VOTERS\*

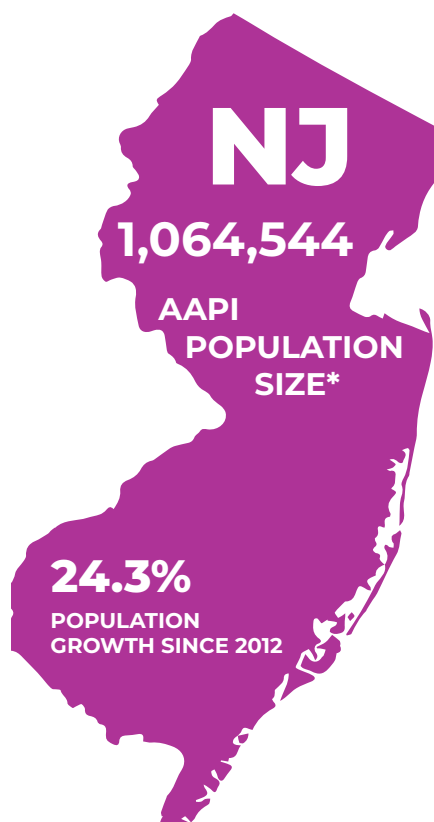
**13.6%**

AAPI VOTER ELIGIBILITY  
GROWTH (2012-2022)

**9.05%**

AAPI SHARE OF  
ELECTORATE IN NEW  
JERSEY

*\* Includes multi-racial population*



**261,911**

FOREIGN BORN  
NONCITIZENS

**391,341**

FOREIGN BORN  
CITIZENS

**378,858**

NATIVE BORN  
CITIZENS

## COUNTIES WITH HIGHEST AAPI POPULATIONS

	AAPI Share of County Pop	Size of AAPI Population	AAPI Eligible Voter Share of County	Number of AAPI Eligible Voters
Middlesex County	25.0%	214,986	37.8%	106,598
Bergen County	16.6%	158,694	24%	91,110
Hudson County	16%	114,165	26.4%	49,332
Somerset County	19.1%	65,754	27.5%	34,464
Morris County	10.8%	54,720	14.8%	29,601

## LARGEST ASIAN AMERICAN ETHNIC GROUPS IN NEW JERSEY

Asian Indian (432,115)	Chinese, except Taiwanese (178,489)	Filipino (150,084)	Korean (110,729)	Pakistani (40,618)	Vietnamese (27,431)
---------------------------	---	-----------------------	---------------------	-----------------------	------------------------

## LARGEST NHPI ETHNIC GROUPS IN NEW JERSEY

Native Hawaiian (2,760)	Chamorro (1,303)	Samoan (920)
----------------------------	---------------------	-----------------

# 2024 AAPI Voter Demographics | NEW JERSEY

## AAPI CITIZEN VOTING AGE POPULATION (CVAP)

**44.5%**

Voters aged 50+

**19.9%**

Voters aged 18-29

## VOTER ENGAGEMENT *(National Level Data)*

- Voter contact falls short for AAPIs. In the 2022 Asian American Voter Survey (AAVS), 56% of Asian Americans had no or uncertain contact from the Democrats. 66% reported the same from the Republicans.
- Of contacted Asian American registered voters, 44% reported outreach from Democrats, 35% from Republicans, 39% from community groups. Comparatively, in 2016, 48% reported Democratic outreach, 16% from the Republicans.
- 37% of registered Asian Americans did not identify with either party, signaling need and opportunity for voter education via outreach.

## IMPORTANCE OF LANGUAGE ACCESS

Per the 2022 AAVS, of Asian Americans speaking non-English languages at home, 11% reported language barriers to voting and 42% stated voting assistance in their language would be utilized. *(National level data).*

**68.3%** of Asian American adults in NJ **speak a language other than English at home.**

**29.2%** of Asian American adults in NJ are **Limited English Proficient** (speak English less than “Very well”)

**Chinese** (124,478) **Hindi** (86,410) **Gujarati** (81,575) **Korean** (78,578) **Tagalog** (77,175)

TOP 5 ASIAN LANGUAGES SPOKEN IN NJ

**Samoan (233)**

TOP NHPI LANGUAGES WITH 100+ ESTIMATED SPEAKERS IN NJ

## SOCIOECONOMIC CHALLENGES IN NEW JERSEY



About 5.9% Asian Americans and 10.9% NHPIs in New Jersey live in poverty.



About 5% Asian Americans and 9.9% NHPIs in New Jersey lack health insurance.



About 8% Asian Americans and 20.8% NHPIs in New Jersey lack broadband access.

## SECTION 203

Section 203 protects voting rights of language minorities by providing “registration or voting notices, forms, instructions, assistance, or other materials or information relating to the electoral process, including ballots” in the language appropriate to the covered minority group.

Coverage determinations for each state, county or county subdivision (depending on which is the operating level of government) is made every 5 years using data from the Census Bureau’s American Community Survey.

### **COVERAGE AREAS:**

**Political Subdivision:** Bergen County  
**Language Minority Group:** Korean

**Political Subdivision:** Middlesex County  
**Language Minority Group:** Asian Indian (including Sikh)



# 2024 AAPI Voter Demographics | NEW MEXICO

**33,194**

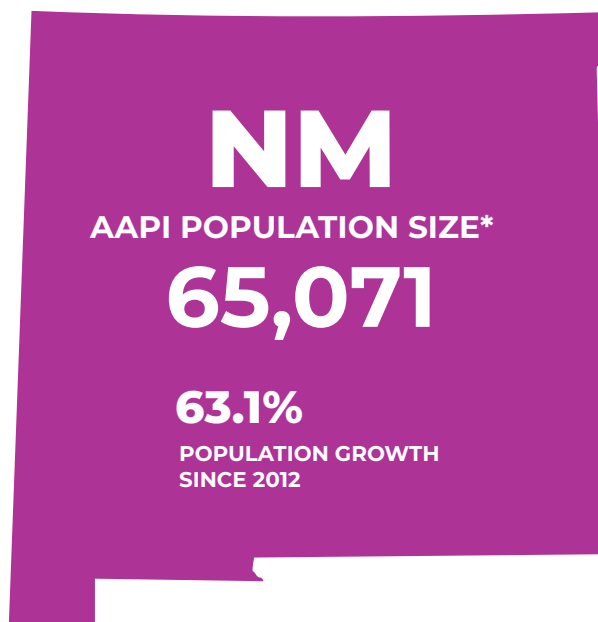
ELIGIBLE AAPI VOTERS\*

**24.3%**

AAPI VOTER ELIGIBILITY  
GROWTH (2012-2022)

**2.13%**

AAPI SHARE OF  
ELECTORATE IN  
NEW MEXICO



**11,955**  
FOREIGN BORN  
NONCITIZENS

**12,368**  
FOREIGN BORN  
CITIZENS

**32,155**  
NATIVE BORN  
CITIZENS

\* Includes multi-racial population

## COUNTIES WITH HIGHEST AAPI POPULATIONS

	AAPI Share of County Pop	Size of AAPI Population	AAPI Eligible Voter Share of County	Number of AAPI Eligible Voters
Bernalillo County	2.8%	18,942	3.8%	11,230

## LARGEST ASIAN AMERICAN ETHNIC GROUPS IN NEW MEXICO

<b>Filipino</b> (15,376)	<b>Chinese, except Taiwanese</b> (8,249)	<b>Vietnamese</b> (6,235)	<b>Asian Indian</b> (5,983)	<b>Japanese</b> (5,821)	<b>Korean</b> (4,578)
-----------------------------	---	------------------------------	--------------------------------	----------------------------	--------------------------

## LARGEST NHPI ETHNIC GROUPS IN NEW MEXICO

<b>Native Hawaiian</b> (2,362)	<b>Chamorro</b> (760)	<b>Samoan</b> (740)
-----------------------------------	--------------------------	------------------------

# 2024 AAPI Voter Demographics | NEW MEXICO

## AAPI CITIZEN VOTING AGE POPULATION (CVAP)

**37%**  
Voters aged 50+

**27%**  
Voters aged 18-29

## VOTER ENGAGEMENT *(National Level Data)*

- Voter contact falls short for AAPIs. In the 2022 Asian American Voter Survey (AAVS), 56% of Asian Americans had no or uncertain contact from the Democrats. 66% reported the same from the Republicans.
- Of contacted Asian American registered voters, 44% reported outreach from Democrats, 35% from Republicans, 39% from community groups. Comparatively, in 2016, 48% reported Democratic outreach, 16% from the Republicans.
- 37% of registered Asian Americans did not identify with either party, signaling need and opportunity for voter education via outreach.

## IMPORTANCE OF LANGUAGE ACCESS

Per the 2022 AAVS, of Asian Americans speaking non-English languages at home, 11% reported language barriers to voting and 42% stated voting assistance in their language would be utilized. *(National level data).*

**45.9%** of Asian American adults in NM **speak a language other than English at home.**

**20.9%** of Asian American adults in NM are **Limited English Proficient** (speak English less than “Very well”)

<b>Tagalog</b>	<b>Vietnamese</b>	<b>Chinese</b>	<b>Korean</b>	<b>Urdu</b>
(4,844)	(4,293)	(4,085)	(1,820)	(860)

### TOP 5 ASIAN LANGUAGES SPOKEN IN NM

## SOCIOECONOMIC CHALLENGES IN NEW MEXICO



About 13.2% Asian Americans and 26.6% NHPs in New Mexico live in poverty.



About 5.5% Asian Americans and 4.9% NHPs in New Mexico lack health insurance.



About 14.2% Asian Americans and 10.6% NHPs in New Mexico lack broadband access.

# 2024 AAPI Voter Demographics | NEW YORK

**1,175,433**

ELIGIBLE AAPI VOTERS\*

**18.3%**

AAPI VOTER ELIGIBILITY  
GROWTH (2012-2022)

**8.35%**

AAPI SHARE OF  
ELECTORATE IN NEW YORK



AAPI POPULATION SIZE\*

**2,062,715**

**22.9%** POPULATION GROWTH  
SINCE 2012

**5.95%** GROWTH IN FIRST TIME  
VOTERS SINCE 2022

**513,524**

FOREIGN BORN  
NONCITIZENS

**757,298**

FOREIGN BORN  
CITIZENS

**764,620**

NATIVE BORN  
CITIZENS

\* Includes multi-racial population

## COUNTIES WITH HIGHEST AAPI POPULATIONS

	AAPI Share of County Pop	Size of AAPI Population	AAPI Eligible Voter Share of County	Number of AAPI Eligible Voters
Queens County	26.1%	615,447	41.9%	328,882
Kings County	12%	322,160	18.5%	177,036
New York County	12.1%	199,535	16.5%	121,862
Nassau County	11.3%	156,684	15.6%	94,624
Suffolk County	4.3%	65,236	5.8%	39,120

## LARGEST ASIAN AMERICAN ETHNIC GROUPS IN NEW YORK

Chinese, except Taiwanese (780,450)	Asian Indian (424,363)	Filipino (159,585)	Korean (146,013)	Bangladeshi (104,928)	Pakistani (93,846)
---	---------------------------	-----------------------	---------------------	--------------------------	-----------------------

## LARGEST NHPI ETHNIC GROUPS IN NEW YORK

Native Hawaiian (7,648)	Samoan (2,709)	Chamorro (2,128)
----------------------------	-------------------	---------------------

# 2024 AAPI Voter Demographics | NEW YORK

## AAPI CITIZEN VOTING AGE POPULATION (CVAP)

**40.3%**  
Voters aged 50+

**22.6%**  
Voters aged 18-29

## VOTER ENGAGEMENT *(National Level Data)*

- Voter contact falls short for AAPIs. In the 2022 Asian American Voter Survey (AAVS), 56% of Asian Americans had no or uncertain contact from the Democrats. 66% reported the same from the Republicans.
- Of contacted Asian American registered voters, 44% reported outreach from Democrats, 35% from Republicans, 39% from community groups. Comparatively, in 2016, 48% reported Democratic outreach, 16% from the Republicans.
- 37% of registered Asian Americans did not identify with either party, signaling need and opportunity for voter education via outreach.

## IMPORTANCE OF LANGUAGE ACCESS

Per the 2022 AAVS, of Asian Americans speaking non-English languages at home, 11% reported language barriers to voting and 42% stated voting assistance in their language would be utilized. *(National level data).*

**68.1%** of Asian American adults in NY **speak a language other than English at home.**

**44.5%** of Asian American adults in NY are **Limited English Proficient** (speak English less than “Very well”)

**Chinese** (602,357) **Bengali** (143,890) **Korean** (89,862) **Tagalog** (76,000) **Urdu** (74,270)

**Other Eastern Malayo-Polynesian languages** (259) **Samoan** (186) **Hawaiian** (100)

### TOP 5 ASIAN LANGUAGES SPOKEN IN NY

### TOP NHPI LANGUAGES WITH 100+ ESTIMATED SPEAKERS IN NY

## SOCIOECONOMIC CHALLENGES IN NEW YORK



About 13.7% Asian Americans and 22.6% NHPIs in New York live in poverty.



About 5.9% Asian Americans and 7.9% NHPIs in New York lack health insurance.



About 13.6% Asian Americans and 24.8% NHPIs in New York lack broadband access.

## SECTION 203

Section 203 protects voting rights of language minorities by providing “registration or voting notices, forms, instructions, assistance, or other materials or information relating to the electoral process, including ballots” in the language appropriate to the covered minority group.

Coverage determinations for each state, county or county subdivision (depending on which is the operating level of government) is made every 5 years using data from the Census Bureau’s American Community Survey.

### **COVERAGE AREAS:**

**Political Subdivision:** Kings County

**Language Minority Group:** Chinese (including Taiwanese)

**Political Subdivision:** New York County

**Language Minority Group:** Chinese (including Taiwanese)

**Political Subdivision:** Queens County

**Language Minority Group:** Asian Indian (including Sikh), Bangladeshi, Chinese (including Taiwanese), Korean

# 2024 AAPI Voter Demographics | NORTH CAROLINA

235,900  
ELIGIBLE AAPI VOTERS\*

55.4%  
AAPI VOTER ELIGIBILITY  
GROWTH (2012-2022)

2.97%  
AAPI SHARE OF  
ELECTORATE IN NORTH  
CAROLINA



AAPI POPULATION SIZE\*

456,655

63.3% POPULATION GROWTH  
SINCE 2012

9.4% GROWTH IN FIRST TIME  
VOTERS SINCE 2022

108,815  
FOREIGN BORN  
NONCITIZENS

121,538  
FOREIGN BORN  
CITIZENS

190,841  
NATIVE BORN  
CITIZENS

\* Includes multi-racial population

## COUNTIES WITH HIGHEST AAPI POPULATIONS

	AAPI Share of County Pop	Size of AAPI Population	AAPI Eligible Voter Share of County	Number of AAPI Eligible Voters
Wake County	7.9%	89,564	11.3%	40,504
Mecklenburg County	6.3%	69,836	9.1%	30,079
Guilford County	5.2%	28,038	7.1%	13,054
Durham County	5.2%	17,058	7.3%	9,591
Orange County	7.8%	11,416	10.4%	5,995

## LARGEST ASIAN AMERICAN ETHNIC GROUPS IN NORTH CAROLINA

Asian Indian (124,397)	Chinese, except Taiwanese (62,079)	Filipino (47,046)	Vietnamese (41,677)	Korean (34,901)	Japanese (20,116)
---------------------------	--	----------------------	------------------------	--------------------	----------------------

## LARGEST NHPI ETHNIC GROUPS IN NORTH CAROLINA

Native Hawaiian (6,330)	Chamorro (3,527)	Samoan (2,795)
----------------------------	---------------------	-------------------

# 2024 AAPI Voter Demographics | NORTH CAROLINA

## AAPI CITIZEN VOTING AGE POPULATION (CVAP)

**33.4%**

Voters aged 50+

**26.9%**

Voters aged 18-29

## VOTER ENGAGEMENT *(National Level Data)*

- Voter contact falls short for AAPIs. In the 2022 Asian American Voter Survey (AAVS), 56% of Asian Americans had no or uncertain contact from the Democrats. 66% reported the same from the Republicans.
- Of contacted Asian American registered voters, 44% reported outreach from Democrats, 35% from Republicans, 39% from community groups. Comparatively, in 2016, 48% reported Democratic outreach, 16% from the Republicans.
- 37% of registered Asian Americans did not identify with either party, signaling need and opportunity for voter education via outreach.

## IMPORTANCE OF LANGUAGE ACCESS

Per the 2022 AAVS, of Asian Americans speaking non-English languages at home, 11% reported language barriers to voting and 42% stated voting assistance in their language would be utilized. *(National level data).*

**58.8%** of Asian American adults in NC **speak a language other than English at home.**

**28.2%** of Asian American adults in NC are **Limited English Proficient** (speak English less than “Very well”)

**Chinese** (37,738) **Vietnamese** (22,544) **Hindi** (20,615) **Telugu** (19,027) **Korean** (14,618)

**Other Eastern Malayo-Polynesian languages** (495) **Samoan** (410) **Chamorro** (350)

### TOP 5 ASIAN LANGUAGES SPOKEN IN NC

### TOP NHPI LANGUAGES WITH 100+ ESTIMATED SPEAKERS IN NC

## SOCIOECONOMIC CHALLENGES IN NORTH CAROLINA



About 9.3% Asian Americans and 12.7% NHPIs in North Carolina live in poverty.



About 7.8% Asian Americans and 11.6% NHPIs in North Carolina lack health insurance.



About 9% Asian Americans and 14.9% NHPIs in North Carolina lack broadband access.

# 2024 AAPI Voter Demographics | NORTH DAKOTA

**9,810**

ELIGIBLE AAPI VOTERS\*

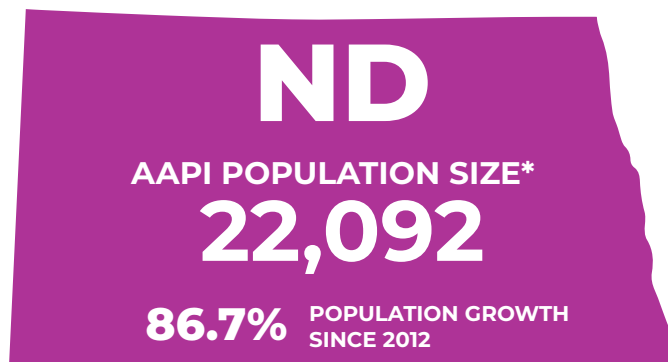
**18.4%**

AAPI VOTER ELIGIBILITY  
GROWTH (2012-2022)

**1.68%**

AAPI SHARE OF ELECTORATE  
IN NORTH DAKOTA

*\* Includes multi-racial population*



**6,947**

FOREIGN BORN  
NONCITIZENS

**3,920**

FOREIGN BORN  
CITIZENS

**8,132**

NATIVE BORN  
CITIZENS

## COUNTIES WITH HIGHEST AAPI POPULATIONS

	AAPI Share of County Pop	Size of AAPI Population	AAPI Eligible Voter Share of County	Number of AAPI Eligible Voters
Cass County	3.2%	5,999	4.4%	1,456

## LARGEST ASIAN AMERICAN ETHNIC GROUPS IN NORTH DAKOTA

Filipino (4,412)	Korean (2,324)	Chinese, except Taiwanese (2,190)	Asian Indian (2,187)	Nepalese (1,436)	Japanese (1,434)
---------------------	-------------------	---	-------------------------	---------------------	---------------------

## LARGEST NHPI ETHNIC GROUPS IN NORTH DAKOTA

Native Hawaiian (749)	Other Micronesian (432)	Marshallese (275)
--------------------------	----------------------------	----------------------



# 2024 AAPI Voter Demographics | NORTH DAKOTA

## AAPI CITIZEN VOTING AGE POPULATION (CVAP)

**27.3%**  
Voters aged 50+

**38.8%**  
Voters aged 18-29

## VOTER ENGAGEMENT *(National Level Data)*

- Voter contact falls short for AAPIs. In the 2022 Asian American Voter Survey (AAVS), 56% of Asian Americans had no or uncertain contact from the Democrats. 66% reported the same from the Republicans.
- Of contacted Asian American registered voters, 44% reported outreach from Democrats, 35% from Republicans, 39% from community groups. Comparatively, in 2016, 48% reported Democratic outreach, 16% from the Republicans.
- 37% of registered Asian Americans did not identify with either party, signaling need and opportunity for voter education via outreach.

## IMPORTANCE OF LANGUAGE ACCESS

Per the 2022 AAVS, of Asian Americans speaking non-English languages at home, 11% reported language barriers to voting and 42% stated voting assistance in their language would be utilized. *(National level data).*

**58.7%** of Asian American adults in ND **speak a language other than English at home.**

**32.6%** of Asian American adults in ND are **Limited English Proficient** (speak English less than “Very well”)

**Tagalog** (2,490) **Nepali** (1,969) **Vietnamese** (1,206) **Chinese** (1,147) **Korean** (686)

### TOP 5 ASIAN LANGUAGES SPOKEN IN ND

**Marshallese** (271) **Samoan** (125)

### TOP NHPI LANGUAGES WITH 100+ ESTIMATED SPEAKERS IN ND

## SOCIOECONOMIC CHALLENGES IN NORTH DAKOTA



About 14.7% Asian Americans and 4.4% NHPIs in North Dakota live in poverty.



About 6.1% Asian Americans and 13.2% NHPIs in North Dakota lack health insurance.



About 21.3% Asian Americans and 28.7% NHPIs in North Dakota lack broadband access.

# 2024 AAPI Voter Demographics | OHIO

**195,826**

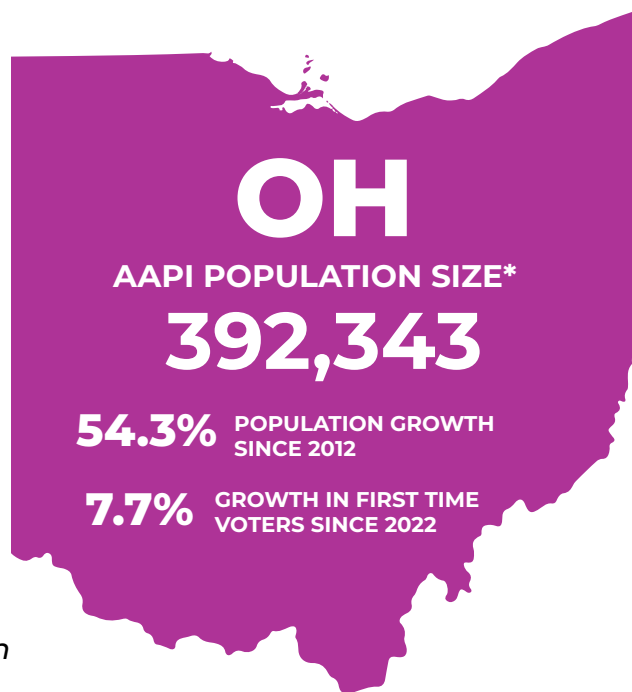
ELIGIBLE AAPI VOTERS\*

**38.4%**

AAPI VOTER ELIGIBILITY  
GROWTH (2012-2022)

**2.18%**

AAPI SHARE OF  
ELECTORATE IN OHIO



**102,026**

FOREIGN BORN  
NONCITIZENS

**110,185**

FOREIGN BORN  
CITIZENS

**168,738**

NATIVE BORN  
CITIZENS

\* Includes multi-racial population

## COUNTIES WITH HIGHEST AAPI POPULATIONS

	AAPI Share of County Pop	Size of AAPI Population	AAPI Eligible Voter Share of County	Number of AAPI Eligible Voters
Franklin County	5.4%	71,652	7.6%	33,855
Cuyahoga County	3.2%	40,389	4.2%	21,641
Hamilton County	2.8%	23,331	3.8%	10,917
Summit County	3.9%	21,190	5.1%	9,627
Warren County	6.6%	16,119	9.1%	5,520

## LARGEST ASIAN AMERICAN ETHNIC GROUPS IN OHIO

Asian Indian (107,861)	Chinese, except Taiwanese (68,853)	Filipino (44,497)	Korean (26,343)	Japanese (23,617)	Vietnamese (20,546)
---------------------------	--	----------------------	--------------------	----------------------	------------------------

## LARGEST NHPI ETHNIC GROUPS IN OHIO

Native Hawaiian (5,050)	Samoan (1,533)	Other Micronesian (1,198)
----------------------------	-------------------	------------------------------

# 2024 AAPI Voter Demographics | OHIO

## AAPI CITIZEN VOTING AGE POPULATION (CVAP)

**34.3%**

Voters aged 50+

**26.3%**

Voters aged 18-29

## VOTER ENGAGEMENT *(National Level Data)*

- Voter contact falls short for AAPIs. In the 2022 Asian American Voter Survey (AAVS), 56% of Asian Americans had no or uncertain contact from the Democrats. 66% reported the same from the Republicans.
- Of contacted Asian American registered voters, 44% reported outreach from Democrats, 35% from Republicans, 39% from community groups. Comparatively, in 2016, 48% reported Democratic outreach, 16% from the Republicans.
- 37% of registered Asian Americans did not identify with either party, signaling need and opportunity for voter education via outreach.

## IMPORTANCE OF LANGUAGE ACCESS

Per the 2022 AAVS, of Asian Americans speaking non-English languages at home, 11% reported language barriers to voting and 42% stated voting assistance in their language would be utilized. *(National level data).*

**57.5%** of Asian American adults in OH **speak a language other than English at home.**

**30.2%** of Asian American adults in OH are **Limited English Proficient** (speak English less than “Very well”)

**Chinese** (42,890) **Nepali** (25,107) **Hindi** (20,869) **Telugu** (14,365) **Tagalog** (12,750)

**Other Eastern Malayo-Polynesian languages** (557) **Samoan** (264) **Hawaiian** (202)

### TOP 5 ASIAN LANGUAGES SPOKEN IN OH

### TOP NHPI LANGUAGES WITH 100+ ESTIMATED SPEAKERS IN OH

## SOCIOECONOMIC CHALLENGES IN OHIO



About 11.4% Asian Americans and 20.2% NHPIs in Ohio live in poverty.



About 6.7% Asian Americans and 11% NHPIs in Ohio lack health insurance.



About 10.5% Asian Americans and 18.1% NHPIs in Ohio lack broadband access.

# 2024 AAPI Voter Demographics | OKLAHOMA

**77,564**

ELIGIBLE AAPI VOTERS\*

**27,051**

FOREIGN BORN  
NONCITIZENS

**47.2%**

AAPI VOTER ELIGIBILITY  
GROWTH (2012-2022)

**2.64%**

AAPI SHARE OF  
ELECTORATE IN  
OKLAHOMA

**OK**  
AAPI POPULATION SIZE\*  
**137,605**

**53.1%** POPULATION GROWTH  
SINCE 2012

**36,189**

FOREIGN BORN  
CITIZENS

**69,942**

NATIVE BORN  
CITIZENS

*\* Includes multi-racial population*

## COUNTIES WITH HIGHEST AAPI POPULATIONS

	AAPI Share of County Pop	Size of AAPI Population	AAPI Eligible Voter Share of County	Number of AAPI Eligible Voters
Oklahoma County	3.4%	27,324	5%	15,734
Tulsa County	3.7%	24,780	5.3%	11,687
Cleveland County	4.6%	13,711	6.1%	7,696

## LARGEST ASIAN AMERICAN ETHNIC GROUPS IN OKLAHOMA

<b>Vietnamese</b> (24,859)	<b>Asian Indian</b> (18,475)	<b>Chinese, except Taiwanese</b> (17,137)	<b>Filipino</b> (15,109)	<b>Korean</b> (10,191)	<b>Japanese</b> (8,188)
-------------------------------	---------------------------------	--	-----------------------------	---------------------------	----------------------------

## LARGEST NHPI ETHNIC GROUPS IN OKLAHOMA

<b>Native Hawaiian</b> (4,114)	<b>Marshallese</b> (3,301)	<b>Chamorro</b> (1,214)
-----------------------------------	-------------------------------	----------------------------

# 2024 AAPI Voter Demographics | OKLAHOMA

## AAPI CITIZEN VOTING AGE POPULATION (CVAP)

**31.8%**

Voters aged 50+

**31.2%**

Voters aged 18-29

## VOTER ENGAGEMENT *(National Level Data)*

- Voter contact falls short for AAPIs. In the 2022 Asian American Voter Survey (AAVS), 56% of Asian Americans had no or uncertain contact from the Democrats. 66% reported the same from the Republicans.
- Of contacted Asian American registered voters, 44% reported outreach from Democrats, 35% from Republicans, 39% from community groups. Comparatively, in 2016, 48% reported Democratic outreach, 16% from the Republicans.
- 37% of registered Asian Americans did not identify with either party, signaling need and opportunity for voter education via outreach.

## IMPORTANCE OF LANGUAGE ACCESS

Per the 2022 AAVS, of Asian Americans speaking non-English languages at home, 11% reported language barriers to voting and 42% stated voting assistance in their language would be utilized. *(National level data).*

**52.6%** of Asian American adults in OK **speak a language other than English at home.**

**28.9%** of Asian American adults in OK are **Limited English Proficient** (speak English less than “Very well”)

**Vietnamese** (15,264) **Chinese** (9,710) **Hmong** (5,630) **Tagalog** (4,348) **Korean** (3,134)

**Marshallese** (1,741) **Chuukese** (401) **Other Eastern Malayo-Polynesian languages** (285)

### TOP 5 ASIAN LANGUAGES SPOKEN IN OK

### TOP NHPI LANGUAGES WITH 100+ ESTIMATED SPEAKERS IN OK

## SOCIOECONOMIC CHALLENGES IN OKLAHOMA



About 14.9% Asian Americans and 13.3% NHPIs in Oklahoma live in poverty.



About 10.1% Asian Americans and 30.6% NHPIs in Oklahoma lack health insurance.



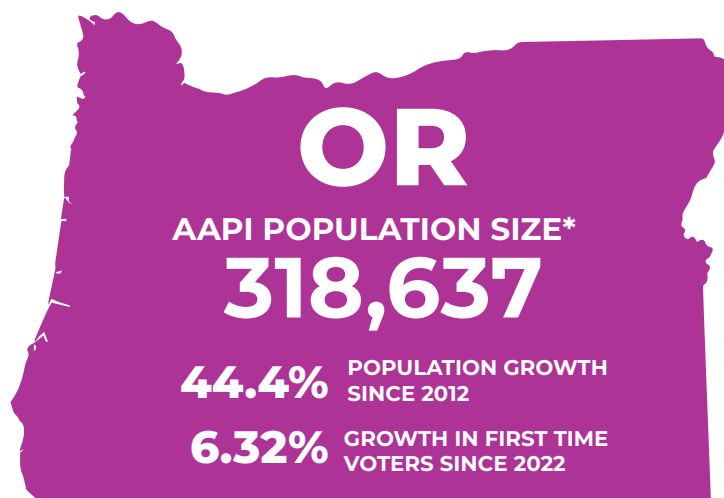
About 18.2% Asian Americans and 18.6% NHPIs in Oklahoma lack broadband access.

# 2024 AAPI Voter Demographics | OREGON

**196,552**  
ELIGIBLE AAPI VOTERS\*

**34.6%**  
AAPI VOTER ELIGIBILITY  
GROWTH (2012-2022)

**6.14%**  
AAPI SHARE OF  
ELECTORATE IN OREGON



**53,832**  
FOREIGN BORN  
NONCITIZENS

**77,434**  
FOREIGN BORN  
CITIZENS

**169,121**  
NATIVE BORN  
CITIZENS

\* Includes multi-racial population

## COUNTIES WITH HIGHEST AAPI POPULATIONS

	AAPI Share of County Pop	Size of AAPI Population	AAPI Eligible Voter Share of County	Number of AAPI Eligible Voters
Washington County	11.3%	67,926	16.3%	36,313
Multnomah County	8%	64,402	10.4%	44,031
Clackamas County	4.9%	20,437	6.4%	13,151
Lane County	2.7%	10,473	3.4%	6,677
Marion County	2.5%	8,596	3.6%	5,964

## LARGEST ASIAN AMERICAN ETHNIC GROUPS IN OREGON

Chinese, except Taiwanese (61,573)	Filipino (49,402)	Vietnamese (38,613)	Japanese (36,120)	Asian Indian (34,349)	Korean (26,086)
--	----------------------	------------------------	----------------------	--------------------------	--------------------

## LARGEST NHPI ETHNIC GROUPS IN OREGON

Native Hawaiian (15,597)	Other Micronesian (4,600)	Chamorro (3,959)
-----------------------------	------------------------------	---------------------

# 2024 AAPI Voter Demographics | OREGON

## AAPI CITIZEN VOTING AGE POPULATION (CVAP)

**33%**  
Voters aged 50+

**28.7%**  
Voters aged 18-29

## VOTER ENGAGEMENT *(National Level Data)*

- Voter contact falls short for AAPIs. In the 2022 Asian American Voter Survey (AAVS), 56% of Asian Americans had no or uncertain contact from the Democrats. 66% reported the same from the Republicans.
- Of contacted Asian American registered voters, 44% reported outreach from Democrats, 35% from Republicans, 39% from community groups. Comparatively, in 2016, 48% reported Democratic outreach, 16% from the Republicans.
- 37% of registered Asian Americans did not identify with either party, signaling need and opportunity for voter education via outreach.

## IMPORTANCE OF LANGUAGE ACCESS

Per the 2022 AAVS, of Asian Americans speaking non-English languages at home, 11% reported language barriers to voting and 42% stated voting assistance in their language would be utilized. *(National level data).*

**49.1%** of Asian American adults in OR **speak a language other than English at home.**

**24.2%** of Asian American adults in OR are **Limited English Proficient** (speak English less than “Very well”)

**Chinese Vietnamese Tagalog Korean Japanese**  
(30,185) (27,209) (10,757) (10,342) (8,188)

**Other Eastern Malayo- Marshallese Chuukese**  
**Polynesian languages** (2,224) (1,681) (1,086)

### TOP 5 ASIAN LANGUAGES SPOKEN IN OR

### TOP NHPI LANGUAGES WITH 100+ ESTIMATED SPEAKERS IN OR

## SOCIOECONOMIC CHALLENGES IN OREGON



About 10.9% Asian Americans and 15.8% NHPIs in Oregon live in poverty.



About 5.0% Asian Americans and 8.9% NHPIs in Oregon lack health insurance.



About 10.9% Asian Americans and 14.4% NHPIs in Oregon lack broadband access.

# 2024 AAPI Voter Demographics | PENNSYLVANIA

**333,590**

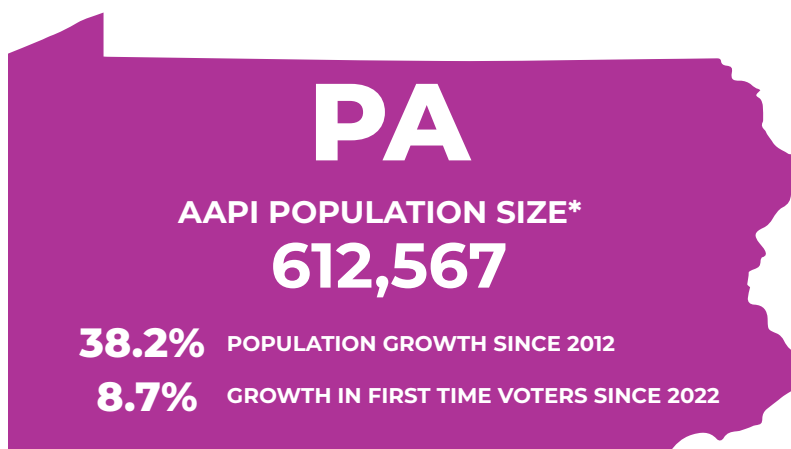
ELIGIBLE AAPI VOTERS\*

**32.1%**

AAPI VOTER ELIGIBILITY  
GROWTH (2012-2022)

**3.35%**

AAPI SHARE OF  
ELECTORATE IN  
PENNSYLVANIA



**150,179**

FOREIGN BORN  
NONCITIZENS

**192,392**

FOREIGN BORN  
CITIZENS

**243,105**

NATIVE BORN  
CITIZENS

\* Includes multi-racial population

## COUNTIES WITH HIGHEST AAPI POPULATIONS

	AAPI Share of County Pop	Size of AAPI Population	AAPI Eligible Voter Share of County	Number of AAPI Eligible Voters
Philadelphia County	7.6%	121,752	10.6%	67,180
Montgomery County	7.9%	67,483	10.5%	35,983
Allegheny County	4.1%	51,148	5.2%	21,831
Delaware County	6.1%	35,009	8.2%	19,310
Chester County	6.3%	33,756	8.6%	13,880

## LARGEST ASIAN AMERICAN ETHNIC GROUPS IN PENNSYLVANIA

<b>Asian Indian</b> (166,355)	<b>Chinese, except Taiwanese</b> (133,991)	<b>Filipino</b> (51,816)	<b>Korean</b> (51,787)	<b>Vietnamese</b> (51,748)	<b>Other Asian, not specified</b> (19,038)
----------------------------------	---	-----------------------------	---------------------------	-------------------------------	---

## LARGEST NHPI ETHNIC GROUPS IN PENNSYLVANIA

<b>Native Hawaiian</b> (4,990)	<b>Samoan</b> (1,490)	<b>Chamorro</b> (1,276)
-----------------------------------	--------------------------	----------------------------



# 2024 AAPI Voter Demographics | PENNSYLVANIA

## AAPI CITIZEN VOTING AGE POPULATION (CVAP)

**35.3%**  
Voters aged 50+

**25.6%**  
Voters aged 18-29

## VOTER ENGAGEMENT *(National Level Data)*

- Voter contact falls short for AAPIs. In the 2022 Asian American Voter Survey (AAVS), 56% of Asian Americans had no or uncertain contact from the Democrats. 66% reported the same from the Republicans.
- Of contacted Asian American registered voters, 44% reported outreach from Democrats, 35% from Republicans, 39% from community groups. Comparatively, in 2016, 48% reported Democratic outreach, 16% from the Republicans.
- 37% of registered Asian Americans did not identify with either party, signaling need and opportunity for voter education via outreach.

## IMPORTANCE OF LANGUAGE ACCESS

Per the 2022 AAVS, of Asian Americans speaking non-English languages at home, 11% reported language barriers to voting and 42% stated voting assistance in their language would be utilized. *(National level data).*

**63.6%** of Asian American adults in PA **speak a language other than English at home.**

**36.8%** of Asian American adults in PA are **Limited English Proficient** (speak English less than “Very well”)

**Chinese** (94,000) **Vietnamese** (33,817) **Korean** (26,241) **Hindi** (26,025) **Gujarati** (24,143)

### TOP 5 ASIAN LANGUAGES SPOKEN IN PA

**Other Eastern Malayo-Polynesian languages** (347) **Samoan** (188) **Tongan** (100)

### TOP NHPI LANGUAGES WITH 100+ ESTIMATED SPEAKERS IN PA

## SOCIOECONOMIC CHALLENGES IN PENNSYLVANIA



About 12.1% Asian Americans and 11.4% NHPIs in Pennsylvania live in poverty.



About 6.3% Asian Americans and 10.6% NHPIs in Pennsylvania lack health insurance.



About 11.9% Asian Americans and 18.5% NHPIs in Pennsylvania lack broadband access.

## SECTION 203

Section 203 protects voting rights of language minorities by providing “registration or voting notices, forms, instructions, assistance, or other materials or information relating to the electoral process, including ballots” in the language appropriate to the covered minority group.

Coverage determinations for each state, county or county subdivision (depending on which is the operating level of government) is made every 5 years using data from the Census Bureau’s American Community Survey.

### **COVERAGE AREAS:**

**Political Subdivision:** Philadelphia County

**Language Minority Group:** Chinese (including Taiwanese)

# 2024 AAPI Voter Demographics | RHODE ISLAND

**27,882**

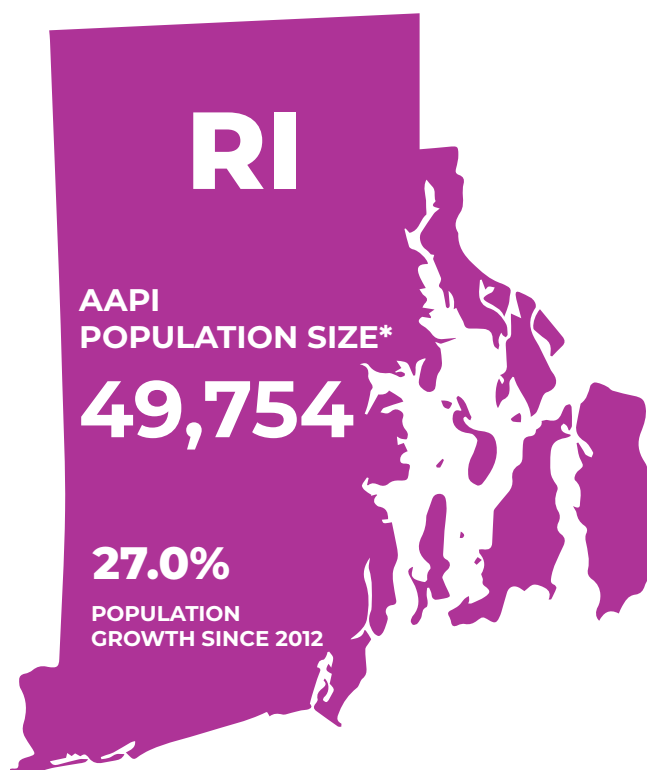
ELIGIBLE AAPI VOTERS\*

**49.6%**

AAPI VOTER ELIGIBILITY  
GROWTH (2012-2022)

**3.38%**

AAPI SHARE OF  
ELECTORATE IN  
RHODE ISLAND



**12,300**

FOREIGN BORN  
NONCITIZENS

**13,265**

FOREIGN BORN  
CITIZENS

**23,627**

NATIVE BORN  
CITIZENS

\* Includes multi-racial population

## COUNTIES WITH HIGHEST AAPI POPULATIONS

	AAPI Share of County Pop	Size of AAPI Population	AAPI Eligible Voter Share of County	Number of AAPI Eligible Voters
Providence County	4.2%	27,949	5.9%	14,801
Kent County	3.1%	5,239	3.9%	2,551

## LARGEST ASIAN AMERICAN ETHNIC GROUPS IN RHODE ISLAND

Asian Indian (10,147)	Chinese, except Taiwanese (9,292)	Cambodian (6,731)	Filipino (5,961)	Laotian (3,101)	Korean (3,072)
--------------------------	---	----------------------	---------------------	--------------------	-------------------

## LARGEST NHPI ETHNIC GROUPS IN RHODE ISLAND

Native Hawaiian (636)	Samoan (213)	Fijian (168)
--------------------------	-----------------	-----------------

# 2024 AAPI Voter Demographics | RHODE ISLAND

## AAPI CITIZEN VOTING AGE POPULATION (CVAP)

**34%**

Voters aged 50+

**32.5%**

Voters aged 18-29

## VOTER ENGAGEMENT *(National Level Data)*

- Voter contact falls short for AAPIs. In the 2022 Asian American Voter Survey (AAVS), 56% of Asian Americans had no or uncertain contact from the Democrats. 66% reported the same from the Republicans.
- Of contacted Asian American registered voters, 44% reported outreach from Democrats, 35% from Republicans, 39% from community groups. Comparatively, in 2016, 48% reported Democratic outreach, 16% from the Republicans.
- 37% of registered Asian Americans did not identify with either party, signaling need and opportunity for voter education via outreach.

## IMPORTANCE OF LANGUAGE ACCESS

Per the 2022 AAVS, of Asian Americans speaking non-English languages at home, 11% reported language barriers to voting and 42% stated voting assistance in their language would be utilized. *(National level data).*

**55.5%** of Asian American adults in RI **speak a language other than English at home.**

**23.3%** of Asian American adults in RI are **Limited English Proficient** (speak English less than “Very well”)

<b>Chinese</b> (5,995)	<b>Khmer</b> (4,183)	<b>Lao</b> (2,254)	<b>Hindi</b> (2,163)	<b>Tagalog</b> (1,317)
---------------------------	-------------------------	-----------------------	-------------------------	---------------------------

## TOP 5 ASIAN LANGUAGES SPOKEN IN RI

## SOCIOECONOMIC CHALLENGES IN RHODE ISLAND



About 11.4% Asian Americans and 24% NHPIs in Rhode Island live in poverty.

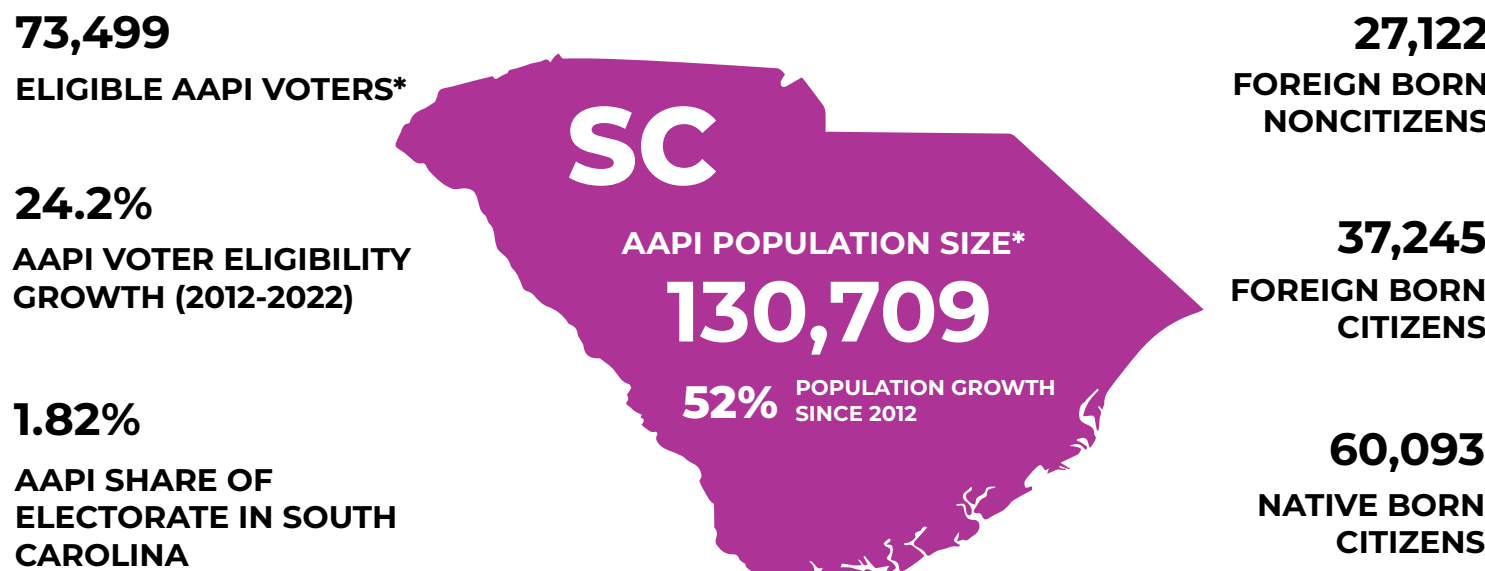


About 6.1% Asian Americans and 6.6% NHPIs in Rhode Island lack health insurance.



About 10.1% Asian Americans and 29.5% NHPIs in Rhode Island lack broadband access.

# 2024 AAPI Voter Demographics | SOUTH CAROLINA



\* Includes multi-racial population

## COUNTIES WITH HIGHEST AAPI POPULATIONS

	AAPI Share of County Pop	Size of AAPI Population	AAPI Eligible Voter Share of County	Number of AAPI Eligible Voters
Greenville County	2.5%	13,467	3.5%	7,199
Richland County	2.9%	12,221	3.9%	5,965
York County	2.7%	7,623	3.7%	3,530
Spartanburg County	2.3%	7,464	3.1%	4,565
Charleston County	1.8%	7,396	2.3%	4,992

## LARGEST ASIAN AMERICAN ETHNIC GROUPS IN SOUTH CAROLINA

Asian Indian (28,950)	Filipino (23,971)	Chinese, except Taiwanese (18,586)	Vietnamese (12,477)	Korean (9,844)	Japanese (7,700)
--------------------------	----------------------	---------------------------------------	------------------------	-------------------	---------------------

## LARGEST NHPI ETHNIC GROUPS IN SOUTH CAROLINA

Native Hawaiian (2,570)	Chamorro (1,344)	Samoan (976)
----------------------------	---------------------	-----------------

# 2024 AAPI Voter Demographics | SOUTH CAROLINA

## AAPI CITIZEN VOTING AGE POPULATION (CVAP)

**36.3%**

Voters aged 50+

**26.4%**

Voters aged 18-29

## VOTER ENGAGEMENT *(National Level Data)*

- Voter contact falls short for AAPIs. In the 2022 Asian American Voter Survey (AAVS), 56% of Asian Americans had no or uncertain contact from the Democrats. 66% reported the same from the Republicans.
- Of contacted Asian American registered voters, 44% reported outreach from Democrats, 35% from Republicans, 39% from community groups. Comparatively, in 2016, 48% reported Democratic outreach, 16% from the Republicans.
- 37% of registered Asian Americans did not identify with either party, signaling need and opportunity for voter education via outreach.

## IMPORTANCE OF LANGUAGE ACCESS

Per the 2022 AAVS, of Asian Americans speaking non-English languages at home, 11% reported language barriers to voting and 42% stated voting assistance in their language would be utilized. *(National level data).*

**53.8%** of Asian American adults in SC **speak a language other than English at home.**

**25.4%** of Asian American adults in SC are **Limited English Proficient** (speak English less than “Very well”)

**Chinese** (10,071) **Tagalog** (8,836) **Vietnamese** (7,836) **Gujarati** (6,179) **Hindi** (5,145)

TOP 5 ASIAN LANGUAGES SPOKEN IN SC

**Other Eastern Malayo-Polynesian languages** (256) **Chamorro** (119)

TOP NHPI LANGUAGES WITH 100+ ESTIMATED SPEAKERS IN SC

## SOCIOECONOMIC CHALLENGES IN SOUTH CAROLINA



About 9.7% Asian Americans and 19.8% NHPIs in South Carolina live in poverty.

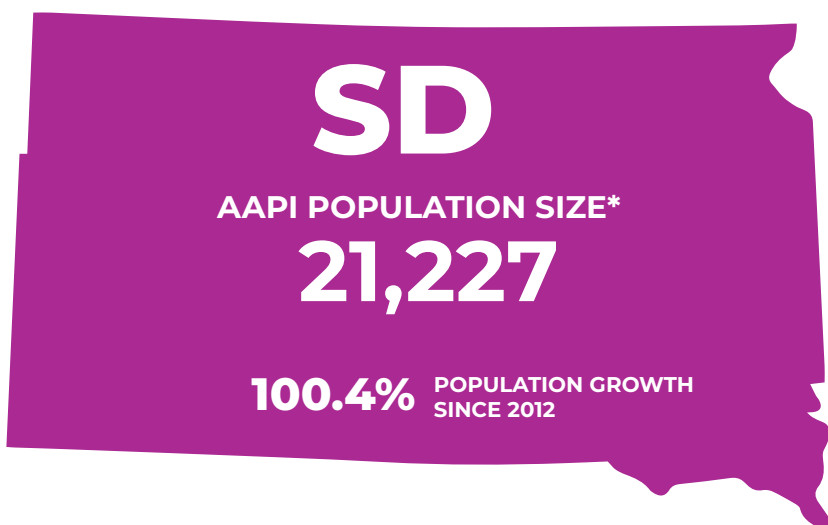


About 9.6% Asian Americans and 16% NHPIs in South Carolina lack health insurance.



About 9.4% Asian Americans and 25.8% NHPIs in South Carolina lack broadband access.

# 2024 AAPI Voter Demographics | SOUTH DAKOTA



**10,070**

ELIGIBLE AAPI VOTERS\*

**62.1%**

AAPI VOTER ELIGIBILITY GROWTH (2012-2022)

**1.49%**

AAPI SHARE OF ELECTORATE IN TENNESSEE

**5,664**

FOREIGN BORN NONCITIZENS

**4,955**

FOREIGN BORN CITIZENS

**7,986**

NATIVE BORN CITIZENS

*\* Includes multi-racial population*

## LARGEST ASIAN AMERICAN ETHNIC GROUPS IN SOUTH DAKOTA

<b>Filipino</b> (3,893)	<b>Asian Indian</b> (2,705)	<b>Korean</b> (1,869)	<b>Chinese, except Taiwanese</b> (1,784)	<b>Burmese</b> (1,507)	<b>Japanese</b> (1,308)
----------------------------	--------------------------------	--------------------------	---	---------------------------	----------------------------

## LARGEST NHPI ETHNIC GROUPS IN SOUTH DAKOTA

<b>Native Hawaiian</b> (445)	<b>Other Micronesians</b> (225)	<b>Chamorro</b> (209)
---------------------------------	------------------------------------	--------------------------

# 2024 AAPI Voter Demographics | SOUTH DAKOTA

## AAPI CITIZEN VOTING AGE POPULATION (CVAP)

**28.6%**  
Voters aged 50+

**35.3%**  
Voters aged 18-29

## VOTER ENGAGEMENT *(National Level Data)*

- Voter contact falls short for AAPIs. In the 2022 Asian American Voter Survey (AAVS), 56% of Asian Americans had no or uncertain contact from the Democrats. 66% reported the same from the Republicans.
- Of contacted Asian American registered voters, 44% reported outreach from Democrats, 35% from Republicans, 39% from community groups. Comparatively, in 2016, 48% reported Democratic outreach, 16% from the Republicans.
- 37% of registered Asian Americans did not identify with either party, signaling need and opportunity for voter education via outreach.

## IMPORTANCE OF LANGUAGE ACCESS

Per the 2022 AAVS, of Asian Americans speaking non-English languages at home, 11% reported language barriers to voting and 42% stated voting assistance in their language would be utilized. *(National level data).*

**54.5%** of Asian American adults in SD **speak a language other than English at home.**

**26.7%** of Asian American adults in SD are **Limited English Proficient** (speak English less than “Very well”)

**Tagalog** (1,547) **Nepali** (1,401) **Hindi** (978) **Karen languages** (690) **Chinese** (575)

## TOP 5 ASIAN LANGUAGES SPOKEN IN SD

## SOCIOECONOMIC CHALLENGES IN SOUTH DAKOTA



About 12.8% Asian Americans and 11.9% NHPs in South Dakota live in poverty.



About 5.7% Asian Americans and 9.1% NHPs in South Dakota lack health insurance.



About 17.2% Asian Americans and 3.4% NHPs in South Dakota lack broadband access.



# 2024 AAPI Voter Demographics | TENNESSEE

104,651

ELIGIBLE AAPI VOTERS\*

43%

AAPI VOTER ELIGIBILITY  
GROWTH (2012-2022)

1.97%

AAPI SHARE OF  
ELECTORATE IN TENNESSEE

\* Includes multi-racial population



AAPI POPULATION SIZE\*

192,911

50.1% POPULATION GROWTH  
SINCE 2012

43,241

FOREIGN BORN  
NONCITIZENS

50,129

FOREIGN BORN  
CITIZENS

85,595

NATIVE BORN  
CITIZENS

## COUNTIES WITH HIGHEST AAPI POPULATIONS

	AAPI Share of County Pop	Size of AAPI Population	AAPI Eligible Voter Share of County	Number of AAPI Eligible Voters
Shelby County	2.9%	27,058	4.1%	12,696
Davidson County	3.6%	25,796	5%	12,985
Williamson County	5.1%	12,808	7.3%	4,934
Rutherford County	3.7%	12,778	5.2%	7,692
Knox County	2.3%	11,192	3%	6,327

## LARGEST ASIAN AMERICAN ETHNIC GROUPS IN TENNESSEE

Asian Indian (38,903)	Chinese, except Taiwanese (25,960)	Filipino (25,896)	Korean (17,353)	Vietnamese (15,827)	Japanese (9,505)
--------------------------	--	----------------------	--------------------	------------------------	---------------------

## LARGEST NHPI ETHNIC GROUPS IN TENNESSEE

Native Hawaiian (4,064)	Samoan (2,430)	Chamorro (1,382)
----------------------------	-------------------	---------------------

# 2024 AAPI Voter Demographics | TENNESSEE

## AAPI CITIZEN VOTING AGE POPULATION (CVAP)

**33.6%**

Voters aged 50+

**27.9%**

Voters aged 18-29

## VOTER ENGAGEMENT *(National Level Data)*

- Voter contact falls short for AAPIs. In the 2022 Asian American Voter Survey (AAVS), 56% of Asian Americans had no or uncertain contact from the Democrats. 66% reported the same from the Republicans.
- Of contacted Asian American registered voters, 44% reported outreach from Democrats, 35% from Republicans, 39% from community groups. Comparatively, in 2016, 48% reported Democratic outreach, 16% from the Republicans.
- 37% of registered Asian Americans did not identify with either party, signaling need and opportunity for voter education via outreach.

## IMPORTANCE OF LANGUAGE ACCESS

Per the 2022 AAVS, of Asian Americans speaking non-English languages at home, 11% reported language barriers to voting and 42% stated voting assistance in their language would be utilized. *(National level data).*

**54%** of Asian American adults in TN **speak a language other than English at home.**

**28%** of Asian American adults in TN are **Limited English Proficient** (speak English less than “Very well”)

**Chinese** (13,987) **Vietnamese** (10,690) **Tagalog** (7,515) **Korean** (7,492) **Hindi** (6,780)

**Other Eastern Malayo-Polynesian languages** (278) **Hawaiian** (233) **Chamorro** (206)

### TOP 5 ASIAN LANGUAGES SPOKEN IN TN

### TOP NHPI LANGUAGES WITH 100+ ESTIMATED SPEAKERS IN TN

## SOCIOECONOMIC CHALLENGES IN TENNESSEE



About 9% Asian Americans and 13.8% NHPIs in Tennessee live in poverty.



About 9.2% Asian Americans and 11.9% NHPIs in Tennessee lack health insurance.



About 12.9% Asian Americans and 15.2% NHPIs in Tennessee lack broadband access.

# 2024 AAPI Voter Demographics | TEXAS

**1,084,982**

ELIGIBLE AAPI VOTERS\*

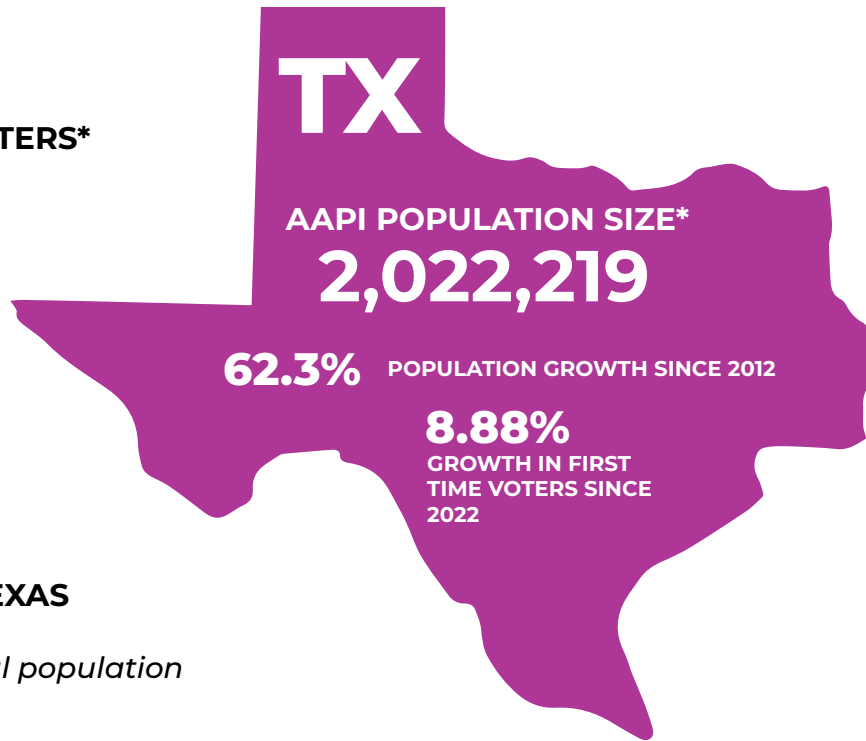
**47.7%**

AAPI VOTER  
ELIGIBILITY  
GROWTH  
(2012-2022)

**5.44%**

AAPI SHARE OF  
ELECTORATE IN TEXAS

\* Includes multi-racial population



**459,783**

FOREIGN BORN  
NONCITIZENS

**603,238**

FOREIGN BORN  
CITIZENS

**767,310**

NATIVE BORN  
CITIZENS

## COUNTIES WITH HIGHEST AAPI POPULATIONS

	AAPI Share of County Pop	Size of AAPI Population	AAPI Eligible Voter Share of County	Number of AAPI Eligible Voters
Harris County	7.1%	33,5931	11.9%	188,088
Collin County	17%	183,752	26.3%	81,480
Fort Bend County	21.4%	178,254	34.4%	97,055
Dallas County	6.7%	175,100	11.3%	82,616
Tarrant County	5.9%	125,315	9%	70,073

## LARGEST ASIAN AMERICAN ETHNIC GROUPS IN TEXAS

<b>Asian Indian</b> (510,320)	<b>Vietnamese</b> (316,369)	<b>Chinese, except Taiwanese</b> (270,337)	<b>Filipino</b> (214,854)	<b>Korean</b> (118,109)	<b>Pakistani</b> (94,097)
----------------------------------	--------------------------------	---	------------------------------	----------------------------	------------------------------

## LARGEST NHPI ETHNIC GROUPS IN TEXAS

<b>Native Hawaiian</b> (22,684)	<b>Chamorro</b> (14,862)	<b>Samoan</b> (9,981)
------------------------------------	-----------------------------	--------------------------

# 2024 AAPI Voter Demographics | TEXAS

## AAPI CITIZEN VOTING AGE POPULATION (CVAP)

**37.2%**  
Voters aged 50+

**23.2%**  
Voters aged 18-29

## VOTER ENGAGEMENT *(National Level Data)*

- Voter contact falls short for AAPIs. In the 2022 Asian American Voter Survey (AAVS), 56% of Asian Americans had no or uncertain contact from the Democrats. 66% reported the same from the Republicans.
- Of contacted Asian American registered voters, 44% reported outreach from Democrats, 35% from Republicans, 39% from community groups. Comparatively, in 2016, 48% reported Democratic outreach, 16% from the Republicans.
- 37% of registered Asian Americans did not identify with either party, signaling need and opportunity for voter education via outreach.

## IMPORTANCE OF LANGUAGE ACCESS

Per the 2022 AAVS, of Asian Americans speaking non-English languages at home, 11% reported language barriers to voting and 42% stated voting assistance in their language would be utilized. *(National level data).*

**64.7%** of Asian American adults in TX **speak a language other than English at home.**

**31.6%** of Asian American adults in TX are **Limited English Proficient** (speak English less than "Very well")

**Vietnamese** (228,739) **Chinese** (179,709) **Hindi** (87,935) **Tagalog** (83,823) **Urdu** (81,914)

**Other Eastern Malayo-Polynesian languages** (1,561) **Samoan** (1,498) **Chamorro** (1,483)

### TOP 5 ASIAN LANGUAGES SPOKEN IN TX

### TOP NHPI LANGUAGES WITH 100+ ESTIMATED SPEAKERS IN TX

## SOCIOECONOMIC CHALLENGES IN TEXAS



About 9.3% Asian Americans and 14.7% NHPIs in Texas live in poverty.



About 10.3% Asian Americans and 16.3% NHPIs in Texas lack health insurance.



About 11.6% Asian Americans and 18.2% NHPIs in Texas lack broadband access.

## SECTION 203

Section 203 protects voting rights of language minorities by providing “registration or voting notices, forms, instructions, assistance, or other materials or information relating to the electoral process, including ballots” in the language appropriate to the covered minority group.

Coverage determinations for each state, county or county subdivision (depending on which is the operating level of government) is made every 5 years using data from the Census Bureau’s American Community Survey.

### **COVERAGE AREAS:**

**Political Subdivision:** Dallas County  
**Language Minority Group:** Vietnamese

**Political Subdivision:** Harris County  
**Language Minority Group:** Chinese (including Taiwanese), Vietnamese

**Political Subdivision:** Tarrant County  
**Language Minority Group:** Vietnamese

# 2024 AAPI Voter Demographics | UTAH

**96,979**

ELIGIBLE AAPI VOTERS\*

**28.8%**

AAPI VOTER ELIGIBILITY  
GROWTH (2012-2022)

**4.24%**

AAPI SHARE OF  
ELECTORATE IN UTAH

**UT**

AAPI POPULATION SIZE\*

**183,861**

**50.4%**

POPULATION GROWTH  
SINCE 2012

**4.61%**

GROWTH IN FIRST TIME  
VOTERS SINCE 2022

**29,852**

FOREIGN BORN  
NONCITIZENS

**31,153**

FOREIGN BORN  
CITIZENS

**110,315**

NATIVE BORN  
CITIZENS

*\* Includes multi-racial population*

## COUNTIES WITH HIGHEST AAPI POPULATIONS

	AAPI Share of County Pop	Size of AAPI Population	AAPI Eligible Voter Share of County	Number of AAPI Eligible Voters
Salt Lake County	5%	59,154	7.5%	36,370
Utah County	1.9%	12,717	3%	8,172
Davis County	2.3%	8,213	3.4%	5,512

## LARGEST ASIAN AMERICAN ETHNIC GROUPS IN UTAH

Chinese, except Taiwanese (25,420)	Filipino (20,808)	Japanese (18,767)	Asian Indian (14,718)	Vietnamese (12,332)	Korean (11,469)
--	----------------------	----------------------	--------------------------	------------------------	--------------------

## LARGEST NHPI ETHNIC GROUPS IN UTAH

Samoan (18,322)	Tongan (18,122)	Native Hawaiian (11,330)
--------------------	--------------------	-----------------------------

# 2024 AAPI Voter Demographics | UTAH

## AAPI CITIZEN VOTING AGE POPULATION (CVAP)

**25.9%**

Voters aged 50+

**35.2%**

Voters aged 18-29

## VOTER ENGAGEMENT *(National Level Data)*

- Voter contact falls short for AAPIs. In the 2022 Asian American Voter Survey (AAVS), 56% of Asian Americans had no or uncertain contact from the Democrats. 66% reported the same from the Republicans.
- Of contacted Asian American registered voters, 44% reported outreach from Democrats, 35% from Republicans, 39% from community groups. Comparatively, in 2016, 48% reported Democratic outreach, 16% from the Republicans.
- 37% of registered Asian Americans did not identify with either party, signaling need and opportunity for voter education via outreach.

## IMPORTANCE OF LANGUAGE ACCESS

Per the 2022 AAVS, of Asian Americans speaking non-English languages at home, 11% reported language barriers to voting and 42% stated voting assistance in their language would be utilized. *(National level data).*

**45.7%** of Asian American adults in UT **speak a language other than English at home.**

**18.5%** of Asian American adults in UT are **Limited English Proficient** (speak English less than “Very well”)

<b>Chinese</b>	<b>Vietnamese</b>	<b>Tagalog</b>	<b>Korean</b>	<b>Hindi</b>
(11,319)	(8,300)	(5,223)	(3,987)	(3,082)

### TOP 5 ASIAN LANGUAGES SPOKEN IN UT

<b>Samoan</b>	<b>Tongan</b>	<b>Marshallese</b>
(5,271)	(5,022)	(1,337)

### TOP NHPI LANGUAGES WITH 100+ ESTIMATED SPEAKERS IN UT

## SOCIOECONOMIC CHALLENGES IN UTAH



About 9.8% Asian Americans and 8.8% NHPIs in Utah live in poverty.



About 8.9% Asian Americans and 10% NHPIs in Utah lack health insurance.



About 13.2% Asian Americans and 14.7% NHPIs in Utah lack broadband access.

# 2024 AAPI Voter Demographics | VERMONT

**9,799**

ELIGIBLE AAPI VOTERS\*

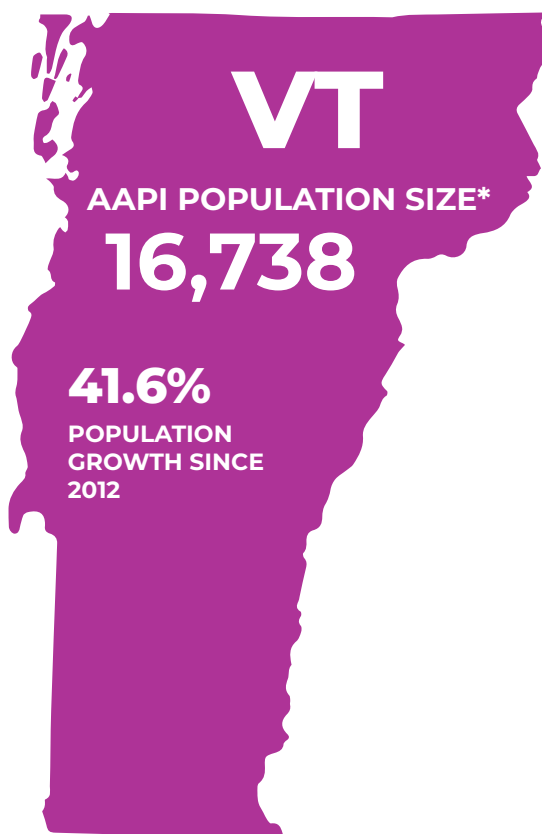
**68.1%**

AAPI VOTER ELIGIBILITY  
GROWTH (2012-2022)

**1.87%**

AAPI SHARE OF  
ELECTORATE IN VERMONT

*\* Includes multi-racial population*



**4,193**

FOREIGN BORN  
NONCITIZENS

**4,662**

FOREIGN BORN  
CITIZENS

**7,572**

NATIVE BORN  
CITIZENS

## COUNTIES WITH HIGHEST AAPI POPULATIONS

	AAPI Share of County Pop	Size of AAPI Population	AAPI Eligible Voter Share of County	Number of AAPI Eligible Voters
Chittenden County,	3.9%	6,611	4.9%	3,481

## LARGEST ASIAN AMERICAN ETHNIC GROUPS IN VERMONT

Chinese, except Taiwanese (3,315)	Filipino (2,407)	Asian Indian (2,404)	Korean (1,828)	Nepalese (1,192)	Vietnamese (1,148)
---	---------------------	-------------------------	-------------------	---------------------	-----------------------

## LARGEST NHPI ETHNIC GROUPS IN VERMONT

Native Hawaiian (179)	Samoan (159)	Chamorro (123)
--------------------------	-----------------	-------------------



# 2024 AAPI Voter Demographics | VERMONT

## AAPI CITIZEN VOTING AGE POPULATION (CVAP)

**25.9%**

Voters aged 50+

**41.3%**

Voters aged 18-29

## VOTER ENGAGEMENT *(National Level Data)*

- Voter contact falls short for AAPIs. In the 2022 Asian American Voter Survey (AAVS), 56% of Asian Americans had no or uncertain contact from the Democrats. 66% reported the same from the Republicans.
- Of contacted Asian American registered voters, 44% reported outreach from Democrats, 35% from Republicans, 39% from community groups. Comparatively, in 2016, 48% reported Democratic outreach, 16% from the Republicans.
- 37% of registered Asian Americans did not identify with either party, signaling need and opportunity for voter education via outreach.

## IMPORTANCE OF LANGUAGE ACCESS

Per the 2022 AAVS, of Asian Americans speaking non-English languages at home, 11% reported language barriers to voting and 42% stated voting assistance in their language would be utilized. *(National level data).*

**48.9%** of Asian American adults in VT **speak a language other than English at home.**

**26.8%** of Asian American adults in VT are **Limited English Proficient** (speak English less than “Very well”)

<b>Chinese</b> (1,489)	<b>Nepali</b> (1,383)	<b>Tagalog</b> (826)	<b>Burmese</b> (468)	<b>Hindi</b> (301)
---------------------------	--------------------------	-------------------------	-------------------------	-----------------------

## TOP 5 ASIAN LANGUAGES SPOKEN IN VT

## SOCIOECONOMIC CHALLENGES IN VERMONT



About 16% Asian Americans and 2% NHPs in Vermont live in poverty.



About 6% Asian Americans and 14.9% NHPs in Vermont lack health insurance.



About 16.1% Asian Americans in Vermont lack broadband access.

# 2024 AAPI Voter Demographics | VIRGINIA

**457,292**

ELIGIBLE AAPI VOTERS\*

**30.1%**

AAPI VOTER ELIGIBILITY  
GROWTH (2012-2022)

**7.12%**

AAPI SHARE OF  
ELECTORATE IN VIRGINIA

\* Includes multi-racial population



AAPI POPULATION SIZE\*

**770,486**

**34.7%** POPULATION GROWTH  
SINCE 2012

**2.59%** GROWTH IN FIRST TIME  
VOTERS SINCE 2022

**146,005**

FOREIGN BORN  
NONCITIZENS

**265,182**

FOREIGN BORN  
CITIZENS

**323,213**

NATIVE BORN  
CITIZENS

## COUNTIES WITH HIGHEST AAPI POPULATIONS

	AAPI Share of County Pop	Size of AAPI Population	AAPI Eligible Voter Share of County	Number of AAPI Eligible Voters
Fairfax County	20.3%	232,204	30.6%	137,601
Loudoun County	20.7%	86,939	32.3%	47,500
Prince William County	9.8%	46,927	15.3%	27,680
Virginia Beach city	7.2%	33,087	9.6%	21,783
Henrico County	9.4%	31,479	13.2%	13,372

## LARGEST ASIAN AMERICAN ETHNIC GROUPS IN VIRGINIA

Asian Indian (170,047)	Filipino (119,925)	Chinese, except Taiwanese (96,879)	Korean (93,521)	Vietnamese (76,442)	Pakistani (39,669)
---------------------------	-----------------------	--	--------------------	------------------------	-----------------------

## LARGEST NHPI ETHNIC GROUPS IN VIRGINIA

Native Hawaiian (6,618)	Chamorro (4,031)	Samoan (2,774)
----------------------------	---------------------	-------------------

# 2024 AAPI Voter Demographics | VIRGINIA

## AAPI CITIZEN VOTING AGE POPULATION (CVAP)

**37.8%**

Voters aged 50+

**22.9%**

Voters aged 18-29

## VOTER ENGAGEMENT *(National Level Data)*

- Voter contact falls short for AAPIs. In the 2022 Asian American Voter Survey (AAVS), 56% of Asian Americans had no or uncertain contact from the Democrats. 66% reported the same from the Republicans.
- Of contacted Asian American registered voters, 44% reported outreach from Democrats, 35% from Republicans, 39% from community groups. Comparatively, in 2016, 48% reported Democratic outreach, 16% from the Republicans.
- 37% of registered Asian Americans did not identify with either party, signaling need and opportunity for voter education via outreach.

## IMPORTANCE OF LANGUAGE ACCESS

Per the 2022 AAVS, of Asian Americans speaking non-English languages at home, 11% reported language barriers to voting and 42% stated voting assistance in their language would be utilized. *(National level data).*

**60.2%** of Asian American adults in VA **speak a language other than English at home.**

**27.9%** of Asian American adults in VA are **Limited English Proficient** (speak English less than “Very well”)

**Chinese** (57,262) **Korean** (55,136) **Vietnamese** (49,094) **Tagalog** (46,101) **Urdu** (33,811)

**Samoan** (385) **Other Eastern Malayo-Polynesian languages** (326) **Chamorro** (207)

### TOP 5 ASIAN LANGUAGES SPOKEN IN VA

### TOP NHPI LANGUAGES WITH 100+ ESTIMATED SPEAKERS IN VA

## SOCIOECONOMIC CHALLENGES IN VIRGINIA



About 6.9% Asian Americans and 10% NHPIs in Virginia live in poverty.



About 6.4% Asian Americans and 8.3% NHPIs in Virginia lack health insurance.



About 8.9% Asian Americans and 17.1% NHPIs in Virginia lack broadband access.

## SECTION 203

Section 203 protects voting rights of language minorities by providing “registration or voting notices, forms, instructions, assistance, or other materials or information relating to the electoral process, including ballots” in the language appropriate to the covered minority group.

Coverage determinations for each state, county or county subdivision (depending on which is the operating level of government) is made every 5 years using data from the Census Bureau’s American Community Survey.

### **COVERAGE AREAS:**

**Political Subdivision:** Fairfax County

**Language Minority Group:** Vietnamese

# 2024 AAPI Voter Demographics | WASHINGTON

**583,722**

ELIGIBLE AAPI VOTERS\*

**24%**

AAPI VOTER ELIGIBILITY  
GROWTH (2012-2022)

**10.44%**

AAPI SHARE OF  
ELECTORATE IN  
WASHINGTON



**233,310**

FOREIGN BORN  
NONCITIZENS

**267,747**

FOREIGN BORN  
CITIZENS

**497,656**

NATIVE BORN  
CITIZENS

*\* Includes multi-racial population*

## COUNTIES WITH HIGHEST AAPI POPULATIONS

	AAPI Share of County Pop	Size of AAPI Population	AAPI Eligible Voter Share of County	Number of AAPI Eligible Voters
King County	19.8%	446,554	28.9%	231,945
Snohomish County	12.6%	104,169	18%	56,119
Pierce County	7.6%	69,624	10.4%	50,525
Clark County	5%	25,094	6.8%	16,994
Thurston County	6.4%	18,894	8.5%	12,901

## LARGEST ASIAN AMERICAN ETHNIC GROUPS IN WASHINGTON

Chinese, except Taiwanese (203,902)	Filipino (187,513)	Asian Indian (154,782)	Vietnamese (103,901)	Korean (100,159)	Japanese (93,123)
---	-----------------------	---------------------------	-------------------------	---------------------	----------------------

## LARGEST NHPI ETHNIC GROUPS IN WASHINGTON

Native Hawaiian (30,431)	Samoan (25,010)	Chamorro (20,359)
-----------------------------	--------------------	----------------------

# 2024 AAPI Voter Demographics | WASHINGTON

## AAPI CITIZEN VOTING AGE POPULATION (CVAP)

**35.7%**  
Voters aged 50+

**25.6%**  
Voters aged 18-29

## VOTER ENGAGEMENT *(National Level Data)*

- Voter contact falls short for AAPIs. In the 2022 Asian American Voter Survey (AAVS), 56% of Asian Americans had no or uncertain contact from the Democrats. 66% reported the same from the Republicans.
- Of contacted Asian American registered voters, 44% reported outreach from Democrats, 35% from Republicans, 39% from community groups. Comparatively, in 2016, 48% reported Democratic outreach, 16% from the Republicans.
- 37% of registered Asian Americans did not identify with either party, signaling need and opportunity for voter education via outreach.

## IMPORTANCE OF LANGUAGE ACCESS

Per the 2022 AAVS, of Asian Americans speaking non-English languages at home, 11% reported language barriers to voting and 42% stated voting assistance in their language would be utilized. *(National level data).*

**55.3%** of Asian American adults in WA **speak a language other than English at home.**

**27.5%** of Asian American adults in WA are **Limited English Proficient** (speak English less than “Very well”)

**Chinese** (126,760) **Vietnamese** (70,340) **Tagalog** (56,876) **Korean** (52,865) **Hindi** (35,313)

### TOP 5 ASIAN LANGUAGES SPOKEN IN WA

**Samoa** (8,424) **Other Eastern Malayo-Polynesian languages** (3,687) **Chamorro** (3,478)

### TOP NHPI LANGUAGES WITH 100+ ESTIMATED SPEAKERS IN WA

## SOCIOECONOMIC CHALLENGES IN WASHINGTON



About 8.6% Asian Americans and 11.1% NHPIs in Washington live in poverty.



About 4.7% Asian Americans and 7.6% NHPIs in Washington lack health insurance.



About 9.5% Asian Americans and 12.2% NHPIs in Washington lack broadband access.

## SECTION 203

Section 203 protects voting rights of language minorities by providing “registration or voting notices, forms, instructions, assistance, or other materials or information relating to the electoral process, including ballots” in the language appropriate to the covered minority group.

Coverage determinations for each state, county or county subdivision (depending on which is the operating level of government) is made every 5 years using data from the Census Bureau’s American Community Survey.

### **COVERAGE AREAS:**

**Political Subdivision:** King County

**Language Minority Group:** Chinese (including Taiwanese), Vietnamese

# 2024 AAPI Voter Demographics | WEST VIRGINIA

**14,493**

ELIGIBLE AAPI VOTERS\*

**55.5%**

AAPI VOTER ELIGIBILITY  
GROWTH (2012-2022)

**1.03%**

AAPI SHARE OF ELECTORATE IN  
WEST VIRGINIA

**4,264**

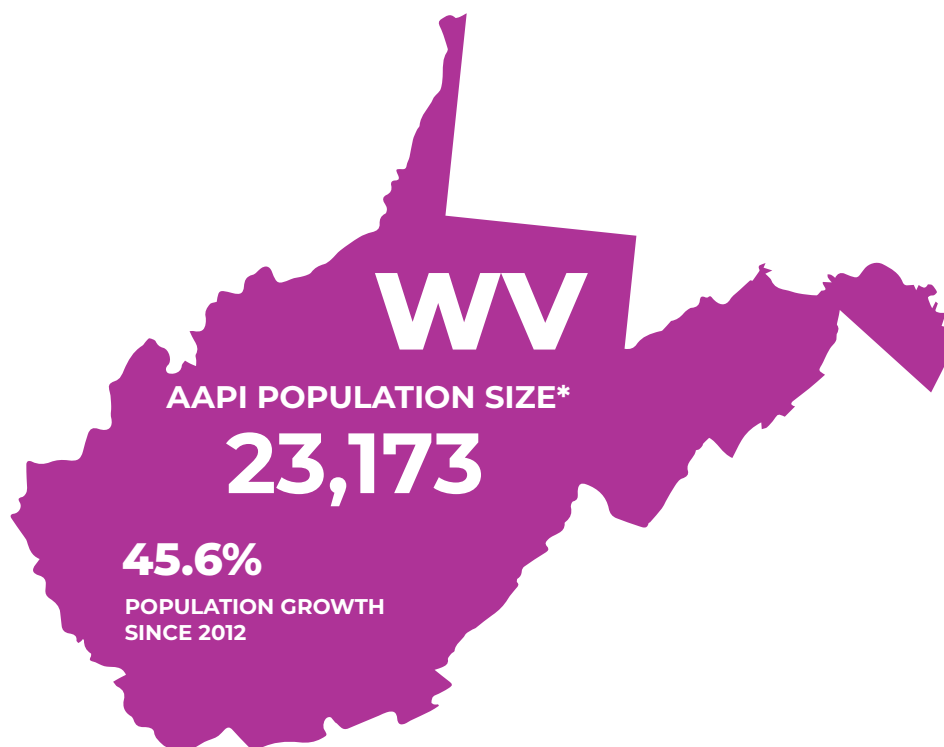
FOREIGN BORN  
NONCITIZENS

**5,587**

FOREIGN BORN  
CITIZENS

**12,743**

NATIVE BORN  
CITIZENS



*\* Includes multi-racial population*

## LARGEST ASIAN AMERICAN ETHNIC GROUPS IN WEST VIRGINIA

<b>Filipino</b> (4,915)	<b>Asian Indian</b> (3,905)	<b>Chinese, except Taiwanese</b> (3,218)	<b>Japanese</b> (2,230)	<b>Korean</b> (1,888)	<b>Vietnamese</b> (1,864)
----------------------------	--------------------------------	---	----------------------------	--------------------------	------------------------------

## LARGEST NHPI ETHNIC GROUPS IN WEST VIRGINIA

<b>Native Hawaiian</b> (759)	<b>Samoan</b> (325)	<b>Other Micronesian</b> (169)
---------------------------------	------------------------	-----------------------------------



# 2024 AAPI Voter Demographics | WEST VIRGINIA

## AAPI CITIZEN VOTING AGE POPULATION (CVAP)

**36.5%**

Voters aged 50+

**30.3%**

Voters aged 18-29

## VOTER ENGAGEMENT *(National Level Data)*

- Voter contact falls short for AAPIs. In the 2022 Asian American Voter Survey (AAVS), 56% of Asian Americans had no or uncertain contact from the Democrats. 66% reported the same from the Republicans.
- Of contacted Asian American registered voters, 44% reported outreach from Democrats, 35% from Republicans, 39% from community groups. Comparatively, in 2016, 48% reported Democratic outreach, 16% from the Republicans.
- 37% of registered Asian Americans did not identify with either party, signaling need and opportunity for voter education via outreach.

## IMPORTANCE OF LANGUAGE ACCESS

Per the 2022 AAVS, of Asian Americans speaking non-English languages at home, 11% reported language barriers to voting and 42% stated voting assistance in their language would be utilized. *(National level data).*

**46.5%** of Asian American adults in WV **speak a language other than English at home.**

**19.8%** of Asian American adults in WV are **Limited English Proficient** (speak English less than “Very well”)

<b>Chinese</b>	<b>Tagalog</b>	<b>Vietnamese</b>	<b>Hindi</b>	<b>Urdu</b>
(1,773)	(1,123)	(1,046)	(805)	(679)

## TOP 5 ASIAN LANGUAGES SPOKEN IN WV

## SOCIOECONOMIC CHALLENGES IN WEST VIRGINIA



About 16.4% Asian Americans and 25.1% NHPs in West Virginia live in poverty.



About 8.3% Asian Americans and 5.8% NHPs in West Virginia lack health insurance.



About 11.5% Asian Americans and 21.4% NHPs in West Virginia lack broadband access.

# 2024 AAPI Voter Demographics | WISCONSIN

**124,157**

ELIGIBLE AAPI VOTERS\*

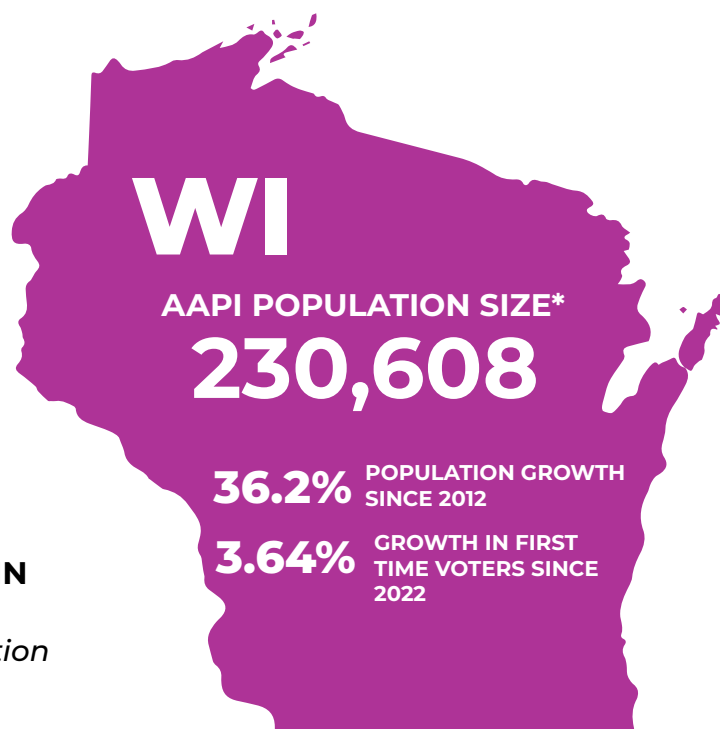
**25.2%**

AAPI VOTER ELIGIBILITY  
GROWTH (2012-2022)

**2.75%**

AAPI SHARE OF  
ELECTORATE IN WISCONSIN

\* Includes multi-racial population



**43,661**

FOREIGN BORN  
NONCITIZENS

**57,122**

FOREIGN BORN  
CITIZENS

**118,808**

NATIVE BORN  
CITIZENS

## COUNTIES WITH HIGHEST AAPI POPULATIONS

	AAPI Share of County Pop	Size of AAPI Population	AAPI Eligible Voter Share of County	Number of AAPI Eligible Voters
Milwaukee County	4.6%	43,295	6.5%	20,989
Dane County,	6.0%	33,548	7.9%	16,400
Waukesha County	3.9%	15,885	5.1%	7,717
Brown County	3.2%	8,534	4.3%	4,107
Marathon County	5.6%	7,711	7.4%	4,362

## LARGEST ASIAN AMERICAN ETHNIC GROUPS IN WISCONSIN

<b>Hmong</b> (58,516)	<b>Asian Indian</b> (37,264)	<b>Chinese, except Taiwanese</b> (32,058)	<b>Filipino</b> (22,363)	<b>Korean</b> (12,980)	<b>Japanese</b> (10,596)
--------------------------	---------------------------------	--	-----------------------------	---------------------------	-----------------------------

## LARGEST NHPI ETHNIC GROUPS IN WISCONSIN

<b>Native Hawaiian</b> (2,079)	<b>Chamorro</b> (797)	<b>Samoan</b> (754)
-----------------------------------	--------------------------	------------------------

# 2024 AAPI Voter Demographics | WISCONSIN

## AAPI CITIZEN VOTING AGE POPULATION (CVAP)

**26.8%**  
Voters aged 50+

**34.1%**  
Voters aged 18-29

## VOTER ENGAGEMENT *(National Level Data)*

- Voter contact falls short for AAPIs. In the 2022 Asian American Voter Survey (AAVS), 56% of Asian Americans had no or uncertain contact from the Democrats. 66% reported the same from the Republicans.
- Of contacted Asian American registered voters, 44% reported outreach from Democrats, 35% from Republicans, 39% from community groups. Comparatively, in 2016, 48% reported Democratic outreach, 16% from the Republicans.
- 37% of registered Asian Americans did not identify with either party, signaling need and opportunity for voter education via outreach.

## IMPORTANCE OF LANGUAGE ACCESS

Per the 2022 AAVS, of Asian Americans speaking non-English languages at home, 11% reported language barriers to voting and 42% stated voting assistance in their language would be utilized. *(National level data).*

**54.9%** of Asian American adults in WI **speak a language other than English at home.**

**29%** of Asian American adults in WI are **Limited English Proficient** (speak English less than “Very well”)

**Hmong** (38,448) **Chinese** (17,559) **Tagalog** (7,687) **Hindi** (6,305) **Vietnamese** (4,794)

TOP 5 ASIAN LANGUAGES SPOKEN IN WI

**Other Eastern Malayo-Polynesian languages** (162) **Marshallese** (109)

TOP NHPI LANGUAGES WITH 100+ ESTIMATED SPEAKERS IN WI

## SOCIOECONOMIC CHALLENGES IN WISCONSIN



About 11.6% Asian Americans and 11.9% NHPIs in Wisconsin live in poverty.



About 6.9% Asian Americans and 8.8% NHPIs in Wisconsin lack health insurance.



About 13.4% Asian Americans and 14.1% NHPIs in Wisconsin lack broadband access.

# 2024 AAPI Voter Demographics | WYOMING

**6,726**

ELIGIBLE AAPI VOTERS\*

**47.1%**

AAPI VOTER ELIGIBILITY  
GROWTH (2012-2022)

**1.52%**

AAPI SHARE OF  
ELECTORATE IN WYOMING

**1,520**

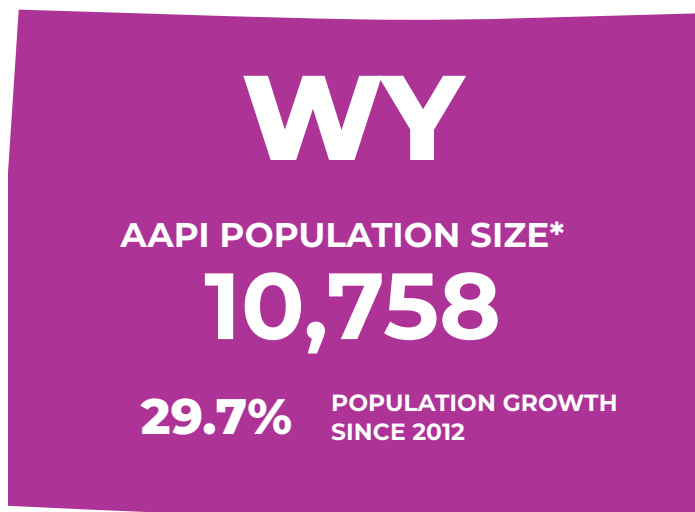
FOREIGN BORN  
NONCITIZENS

**1,955**

FOREIGN BORN  
CITIZENS

**6,880**

NATIVE BORN  
CITIZENS



*\* Includes multi-racial population*

## LARGEST ASIAN AMERICAN ETHNIC GROUPS IN WYOMING

<b>Filipino</b> (2,222)	<b>Chinese, except Taiwanese</b> (1,800)	<b>Japanese</b> (1,663)	<b>Asian Indian</b> (950)	<b>Korean</b> (913)	<b>Vietnamese</b> (403)
----------------------------	---	----------------------------	------------------------------	------------------------	----------------------------

## LARGEST NHPI ETHNIC GROUPS IN WYOMING

<b>Native Hawaiian</b> (729)	<b>Samoan</b> (209)	<b>Chamorro</b> (180)
---------------------------------	------------------------	--------------------------

# 2024 AAPI Voter Demographics | WYOMING

## AAPI CITIZEN VOTING AGE POPULATION (CVAP)

**28.4%**

Voters aged 50+

**34.4%**

Voters aged 18-29

## VOTER ENGAGEMENT *(National Level Data)*

- Voter contact falls short for AAPIs. In the 2022 Asian American Voter Survey (AAVS), 56% of Asian Americans had no or uncertain contact from the Democrats. 66% reported the same from the Republicans.
- Of contacted Asian American registered voters, 44% reported outreach from Democrats, 35% from Republicans, 39% from community groups. Comparatively, in 2016, 48% reported Democratic outreach, 16% from the Republicans.
- 37% of registered Asian Americans did not identify with either party, signaling need and opportunity for voter education via outreach.

## IMPORTANCE OF LANGUAGE ACCESS

Per the 2022 AAVS, of Asian Americans speaking non-English languages at home, 11% reported language barriers to voting and 42% stated voting assistance in their language would be utilized. *(National level data).*

**34.1%** of Asian American adults in WY **speak a language other than English at home.**

**14.8%** of Asian American adults in WY are **Limited English Proficient** (speak English less than “Very well”)

**Chinese** (956) **Tagalog** (486) **Korean** (200) **Vietnamese** (199) **Telugu** (185)

## TOP 5 ASIAN LANGUAGES SPOKEN IN WY

## SOCIOECONOMIC CHALLENGES IN WYOMING



About 16.5% Asian Americans and 14% NHPs in Wyoming live in poverty.



About 10.9% Asian Americans and 18.5% NHPs in Wyoming lack health insurance.



About 12.9% Asian Americans and 17.7% NHPs in Wyoming lack broadband access.